

Samsung Security Manager Screen Mirroring Agent

User Manual

VER 1.0



CONTENTS

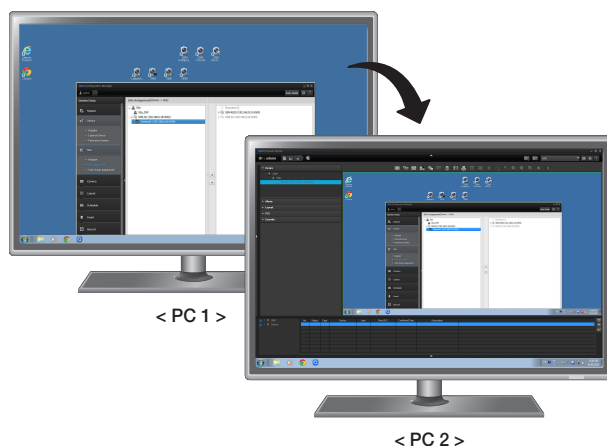
OVERVIEW	2	Contents
	3	Before installation
	4	Installation
STARTING	7	Confirmation of installation
	7	Running SSM-SC
	7	SSM-SC Setting
SOFTWARE UPDATE	14	Setting the Software Update
SSM REGISTRATION	16	SSM Registration
APPENDIX	18	System Configuration
	18	Using Capture Card
	19	Open Source License Notification on the Product

BEFORE INSTALLATION

What is SSM-SC?

The SSM-SC (Screen Mirroring Agent) software is an add-on program of SSM (Samsung Security Manager), and provides the function of transmitting the user's PC screen to SSM.

SSM must be installed first in order to use SSM-SC.



System Requirements

The following minimum specifications must be met to install SVM.

Name	Minimum specifications	Recommended specifications
CPU	Intel i5(Sandy bridge)	Intel i7(Sandy bridge)
RAM	2GB	4GB
VGA	Intel CPU with internal VGA	NVIDIA GTX 650 series or higher AMD(ATI) R7/R9 series or higher
OS	Windows7(32/64bit), Windows8(32/64bit), Window 8.1, Windows 10	

Product Organization

- SSM-SC Installation File
- User Manual

Software Organization

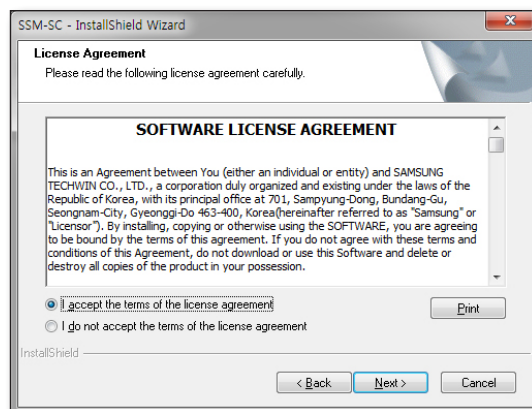
SSM-SC provides the following 3 application programs.

- SSM-SC(Screen Mirroring Agent) : A program capturing the PC monitor screen
- License Manager : A license management program
- Update Manager : A program updating SSM-SC to the latest version

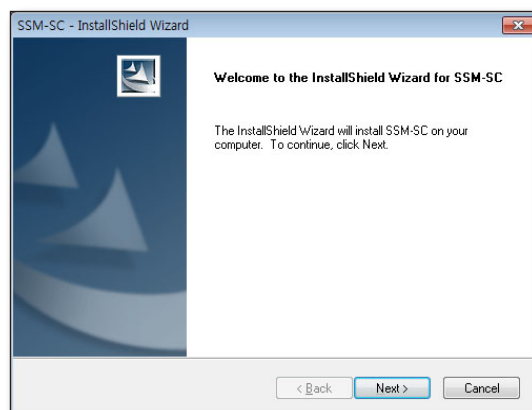
overview

INSTALLATION

1. Run the SSM-SC installation file.
2. The PC may have to be rebooted while the components are installed.
In that case, the installation will automatically resume after rebooting.



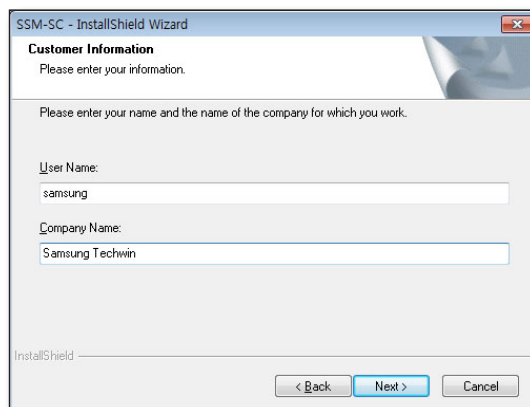
3. Click the [Next >] button when the installation window appears.



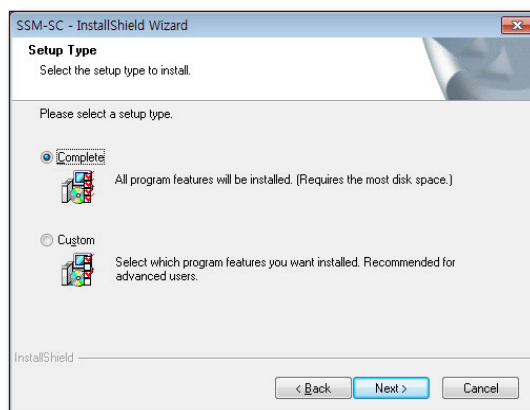
4. Agree to the terms and condition of the license and click the [Next >] button to proceed to the next step.



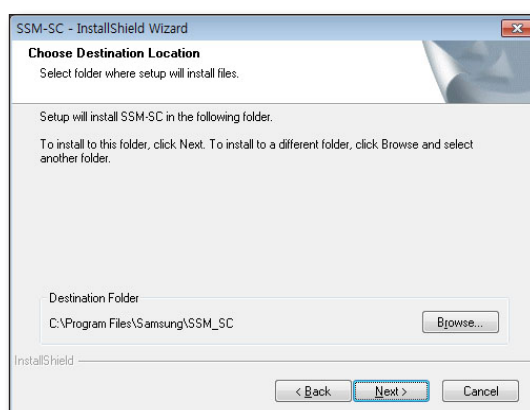
5. Enter the user name and company and proceed to the next screen.



6. Select a setup type.
 - If you select <Custom> you can specify the installation path.

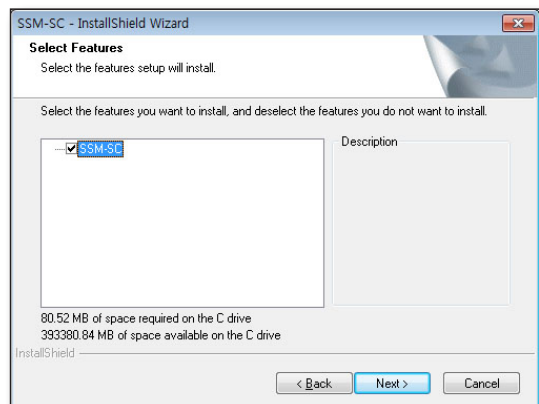


7. Specify the folder to save the installation file.
The default is set to "C:\Program Files\Samsung".
 - To change the path, click the [Browse...] button and input the path or select a folder to change the folder path.
8. Click the [Next >] button to proceed to the next step.

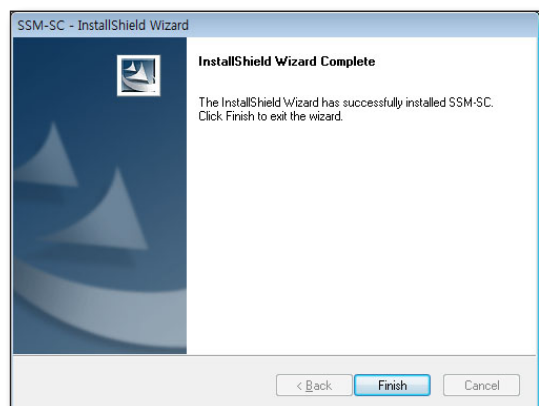


overview

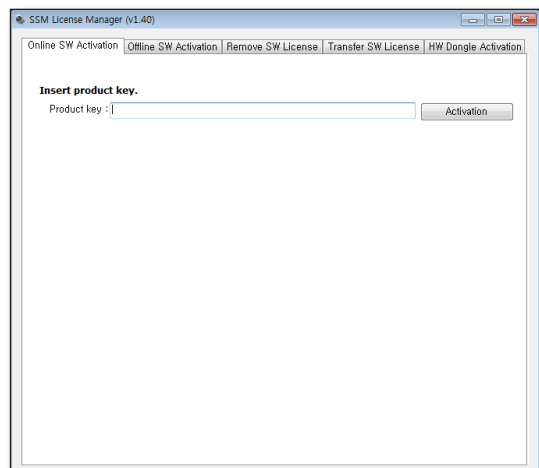
9. Check SSM-SC and click the **[Next >]** button.



10. Click the **[Finish]** button to complete the installation.



11. The product key must be checked during the first installation. Register the product key to complete installation.

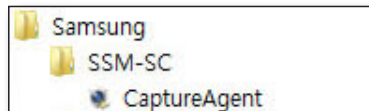


starting

CONFIRMATION OF INSTALLATION

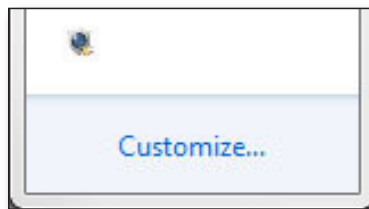
Confirm that SSM-SC is successfully completed.

1. Move to the <Start> menu.
2. If Samsung Security Manager is successfully installed, the <CaptureAgent> item appears under <Samsung> - <SSM-SC>.



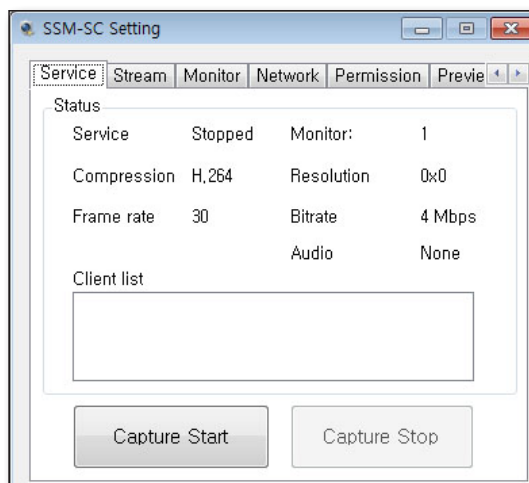
RUNNING SSM-SC

1. Click the SSM-SC executable file to run SSM-SC.
2. The SSM Screen Mirroring Agent icon is created in the task bar as shown on the right.
3. To terminate the program, right-click on the Capture Agent icon and select <Exit> from the contextual menu.



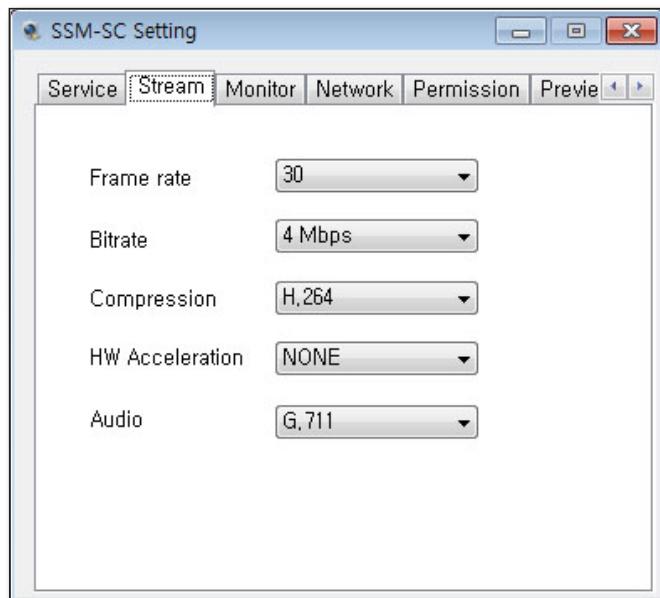
SSM-SC SETTING

1. Right-click on the <Capture Agent> icon and select <Setting> from the context menu.
2. The SSM-SC setting window appears, as shown on the right.
You can adjust various capture parameters in the window.



Setting the stream

Select the <Stream> tab to display the menu below.



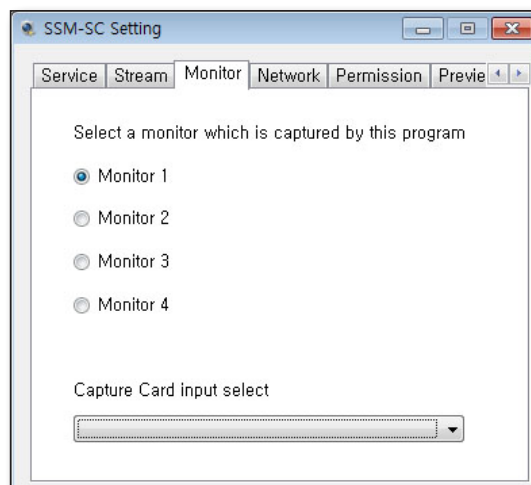
1. Select the <Frame rate>.
2. Select the <Bit rate>.
3. Select the <Compression>.
 - MJPEG : This has a high bit rate but utilizes the CPU less. This option is recommended when there is no hardware acceleration.
 - H.264 : This uses a low bit rate but utilizes the CPU more. This option is recommended when there is hardware acceleration.
4. Select the <HW Acceleration>.
 - AMD Radeon HD 7700, AMD VGA supports HW acceleration only with a single monitor configuration.
 - Supported only for H.264 codec.
 - It is provided for NVIDIA GTX-650 series or higher, AMD ATI R7/R9 or higher, Intel CPU internal VGA.
5. Select the option to use the audio and compression method.
 - Audio means the MIC input of the PC.
 - NONE : If you select NONE, it won't be possible to transfer audio.
 - G.711 : This is a codec for voice.



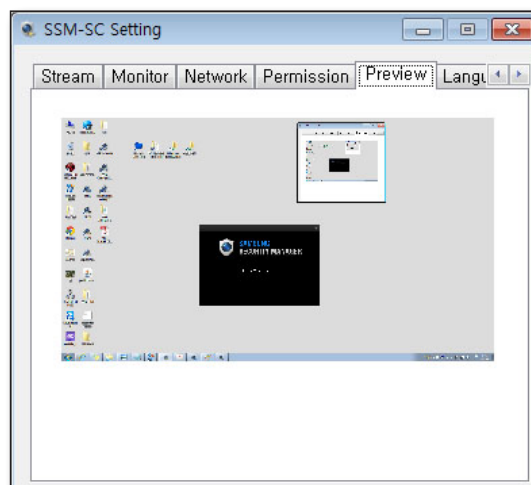
- The bit rate may be different according to the video.

Setting the monitor

1. Select the <**Monitor**> tab to display the monitor setting window. Select the monitor to capture, or capture card input.
 - Select a monitor which is captured by this program : 1 of 4 monitors can be selected.
 - Capture Card input select : The support device is automatically added to the list if a capture card, camera, etc. are installed in the PC. (A monitor cannot be selected if a capture card is selected.)
- ! ■ You can make the selection regardless of the physical monitor layout. In other words, if you select Monitor 3 when there is only one monitor, the system will attempt to capture the virtual logical monitor 3.

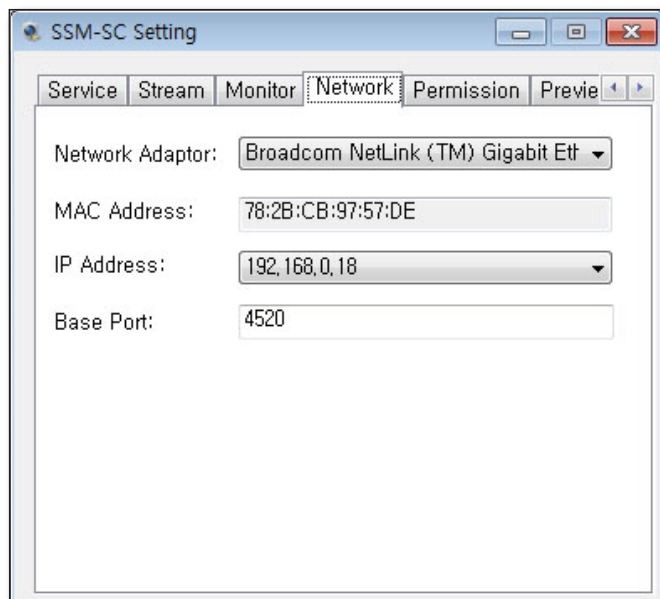


2. You can preview the screen after selecting a monitor or capture card. Select the <**Preview**> tab to navigate to the Preview screen.



Setting the network

Select the <Network> tab to navigate to the Network Setting window.

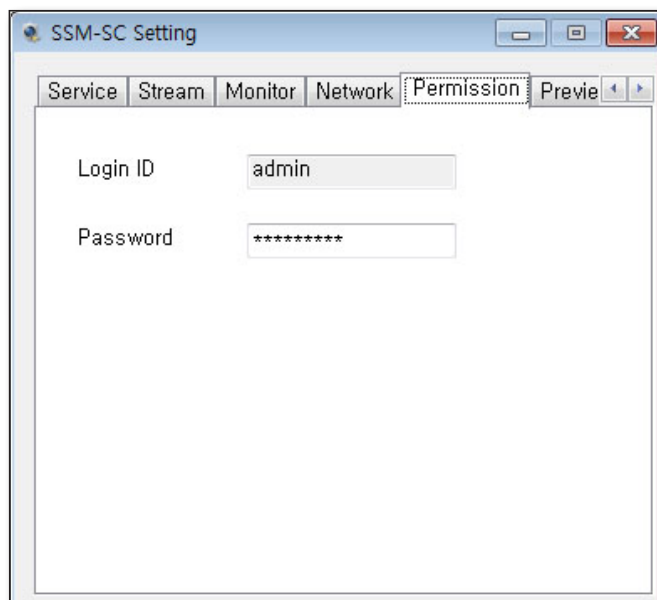


- Network Adaptor : You can select a network adapter to use if two or more LAN cards are installed.
- MAC Address : When you select a network adapter, the MAC address of the adapter is automatically selected.
- IP Address : You can select one of the IP addresses configured in the adaptor.
- Base Port : You can assign the port number to be used for network transfer.

! ■ The port should be clear of firewall.

Setting the permission

Select the <Permission> tab to navigate to the Permission Setting window.

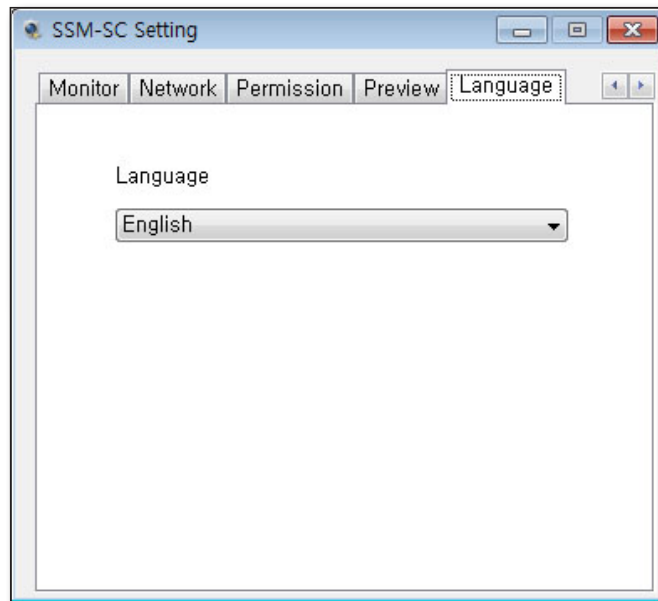


- Login ID : The ID is fixed to "admin".
- Password : You can set the password.

- ! ■ For security, a password has following constraints.
- ID and password should not be the same.
 - Should be a minimum of 8 characters and a maximum of 32.
 - If the password has a character length of 8 to 9, it should consist of letters + numbers + special characters. (There are no restrictions on special characters.)
 - If the password has a character length of 10 or more, it should consist of letters + numbers at least.
 - Strings of 4 or more consecutive letters or numbers cannot be used (e.g. abcd, dcba).
 - Strings of 4 or more duplicated letters or numbers cannot be used (e.g. 1111, qqqq).
 - If a password violates any fundamental rule, it cannot be used.

Language Setting

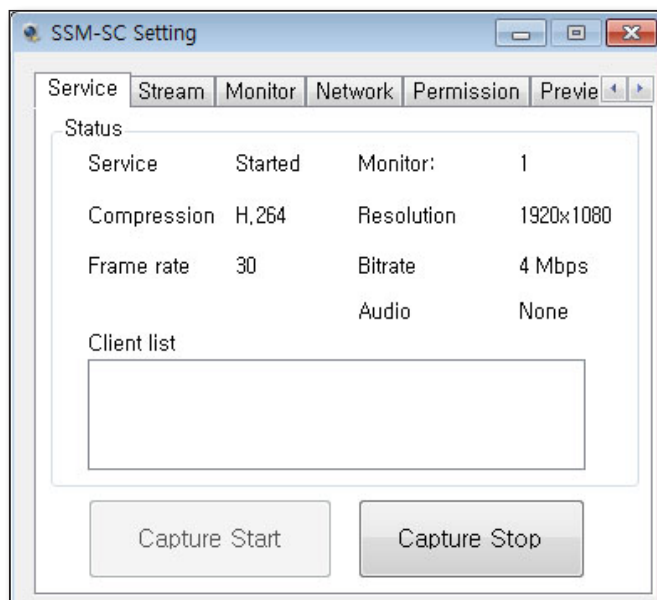
Select the <Language> tab to navigate to the Language Setting window.



- Language : The language change is applied immediately.

Service Setting

Select the <Service> tab to navigate to the Service Setting window.



Click the [Capture Start] button to begin the capture service. Click the [Capture Stop] button to stop it.

If the service is terminated due to the program's termination, PC rebooting, etc., run the capture agent again to automatically resume the service.

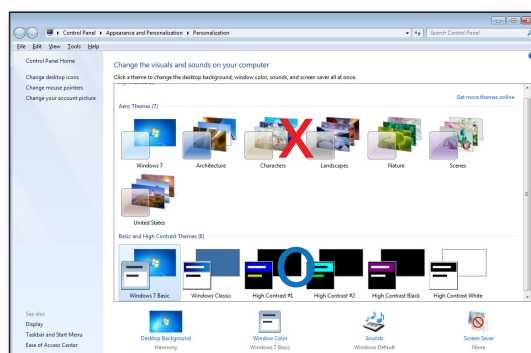
Capture Agent saves the service operation status at the time of termination, and can resume the service when it is restarted.

In other words, if you run the Capture Agent again after it was terminated in the middle of service, it is changed to the service operating status. If it is terminated while service operation is suspended, it will maintain the service operation suspended status when the program is run again.



- You cannot change the transfer, monitor and network setting during the capture service operation.

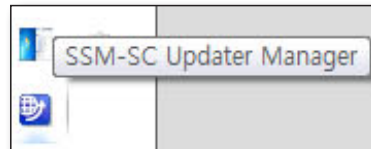
The performance will deteriorate if you use the "Aero Theme" in Windows 7 or higher. Change the theme in control panel. (The default theme is recommended.)



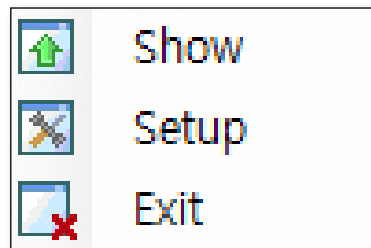
software update

SETTING THE SOFTWARE UPDATE

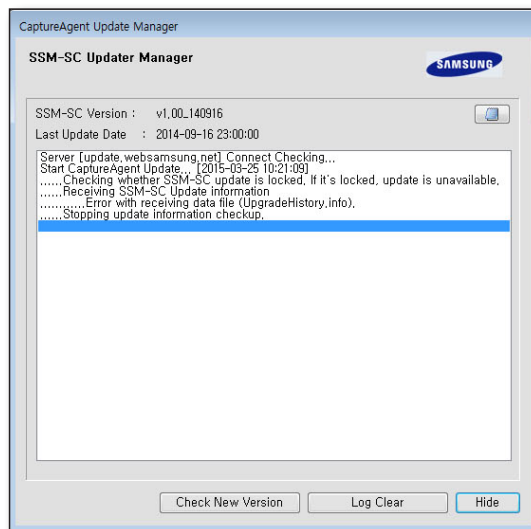
1. SSM-SC Updater Manager is also installed when you install SSM-SC. The SSM-SC Updater Manager is automatically run and registered in the Windows start program list after installation, so that it is automatically run after a Windows login.



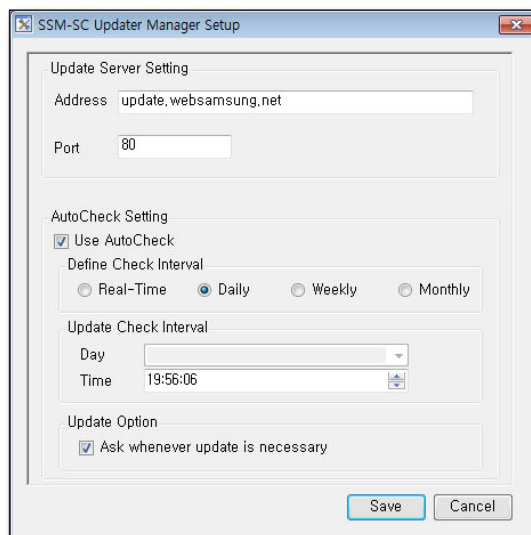
2. You can check the SSM-SC Updater Manager in the task manager. Right-click on the icon to display the menu as shown on the right.



3. Select <Show> to check the current update status as well as the version and edit information of the installed program. Click the [Check New Version] button to check if there is a new version, and update it if so. You can set the automatic update option in <Setup>.



4. Right-click in task manager to run <Setup> and set the update option.
 - Update Server Setting : Set the server address and port to update.
 - AutoCheck Setting : Set the update checking interval and update option. You can select one of 4 update checking intervals.
 - Real-Time : A check for an update is performed every 30 seconds.
 - Daily : A check for an update is performed daily.
 - Weekly : A check for an update is performed weekly.
 - Monthly : A check for an update is performed monthly.
 - Update Option : If <Ask whenever update is necessary> is checked, the popup window will appear, asking whether to update it or not.



SSM registration

SSM REGISTRATION

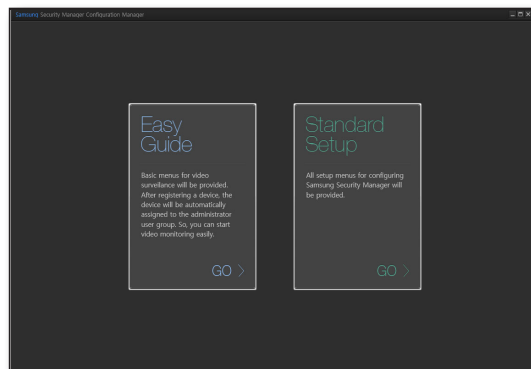
The following job must be completed first in SSM to use SSM-SC.

- Please refer to "**SSM User Manual**" for more details.


1. Run SSM Configuration Manager.

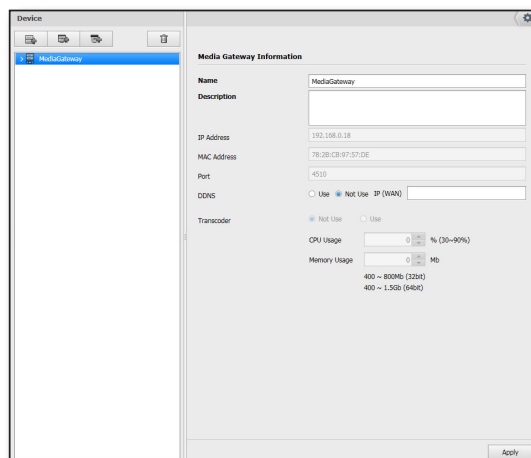


2. Select <Easy Guide>.

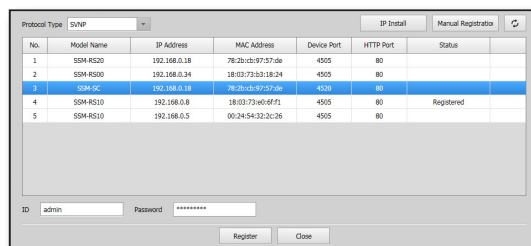


3. Click <Register> to navigate to the Device Registration menu.

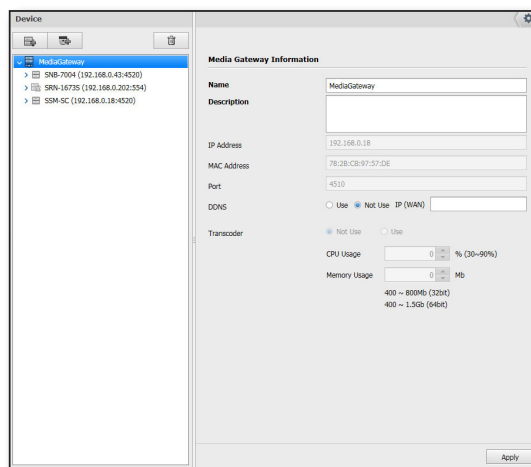
4. Use the [] button to search the cameras and other devices connected over the network.



- You can register SSM-SC in the same way as registering a network camera.
Select SSM-SC and enter **"admin"** for ID and the password set in SSM-SC. Then click the **[Register]** button.



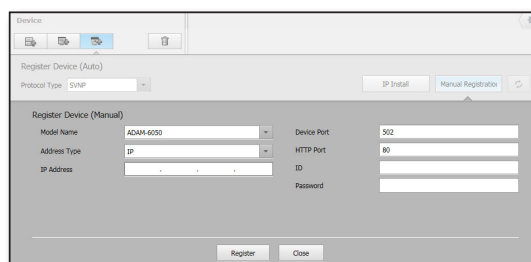
- After a device is registered, you can operate it like a network camera.



To add device manually

Device can be registered manually by a user.

- Click **[Manual Registration]** button.
"Register Device (Manual)" window should appear.
- Select **<SSM-SC>** as Model Name.
- Select the **<Address Type>**.
 - SSM-SC only supports **SVNP**.
- Provide required information for connection to the device.
 - Required information is dependant to the set address type.
- Enter the ID and password.
 - The User ID and password should be the account registered to the corresponding device.
- Click **[Register]**.
 - If connection encounters error, corresponding message of cause is displayed.

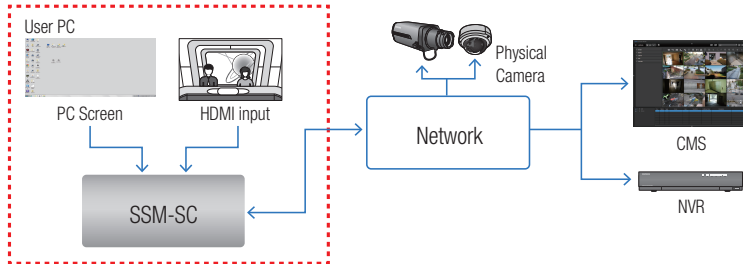


- When a device is registered in **<Easy Guide>** mode, the site and administrator group are automatically assigned.
In **<Standard Setup>** mode, the administrator group is automatically assigned after the device is registered and the site is assigned.

appendix

SYSTEM CONFIGURATION

SSM-SC (Screen Mirroring Agent) is an add-on program to provide a PC screen to SSM (Samsung Security Manager).

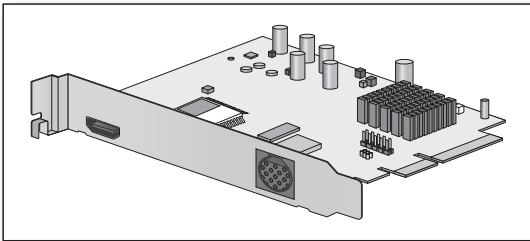


The figure above shows how SSM-SC is connected.

USING CAPTURE CARD

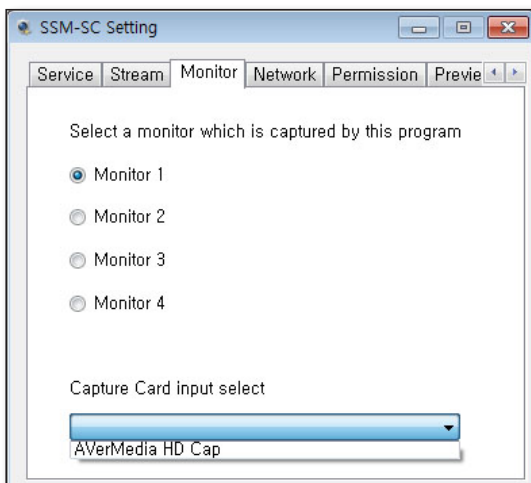
The following job must be completed first in order to capture the external input (HDMI/Composite) in SSM-SC. Please refer to the manual of the capture card for more details on the installation of the card and driver.

1. Install the capture card.



2. Select the capture card input.

The list of available capture cards is displayed as shown below. Select an input. Confirm that the image is correctly selected in the <Preview> tab after the selection.



OPEN SOURCE LICENSE NOTIFICATION ON THE PRODUCT

The software included in this product contains copyrighted software that is licensed under the Apache License 2.0/Code Project Open 1.02 License.

- **Apache License 2.0** : Apache ActiveMQ, fiskidagur
- **Code Project Open 1.02 License** : Code Project – AlphaBlendTextBox – A transparent/translucent textbox for .NET, Code Project – Animating Windows Forms, Code Project – BarTender – Group your contents, Code Project – Cabinet File (*.CAB) Compression and Extraction, Code Project – Data Encryption/Decryption using RijndaelManaged and PasswordDeriveByt, Code Project – How to skin scrollbars for Panels, in C#, Code Project – Simple Movie Database in C# using Microsoft Access, Code Project – Simplest PDF Generating API for JPEG Image Content, Code Project – Sinking connection points in C++ objects, Code Project – Windows Management Instrumentation (WMI) Implementation

Apache License 2.0

We used the Apache ActiveMQ in our application and we did not modify the source code.

Copyright (c)

- Apache ActiveMQ (2005-2008, The Apache Software Foundation)

<http://www.apache.org/licenses/>

TERMS AND CONDITIONS FOR USE, REPRODUCTION, AND DISTRIBUTION

1. Definitions.

"License" shall mean the terms and conditions for use, reproduction, and distribution as defined by Sections 1 through 9 of this document.

"Licensor" shall mean the copyright owner or entity authorized by the copyright owner that is granting the License.

"Legal Entity" shall mean the union of the acting entity and all other entities that control, are controlled by, or are under common control with that entity. For the purposes of this definition, "control" means (i) the power, direct or indirect, to cause the direction or management of such entity, whether by contract or otherwise, or (ii) ownership of fifty percent (50%) or more of the outstanding shares, or (iii) beneficial ownership of such entity.

"You" (or "Your") shall mean an individual or Legal Entity exercising permissions granted by this License.

"Source" form shall mean the preferred form for making modifications, including but not limited to software source code, documentation source, and configuration files.

"Object" form shall mean any form resulting from mechanical transformation or translation of a Source form, including but not limited to compiled object code, generated documentation, and conversions to other media types.

"Work" shall mean the work of authorship, whether in Source or Object form, made available under the License, as indicated by a copyright notice that is included in or attached to the work (an example is provided in the Appendix below).

"Derivative Works" shall mean any work, whether in Source or Object form, that is based on (or derived from) the Work and for which the editorial revisions, annotations, elaborations, or other modifications represent, as a whole, an original work of authorship. For the purposes of this License, Derivative Works shall not include works that remain separable from, or merely link (or bind by name) to the interfaces of, the Work and Derivative Works thereof.

"Contribution" shall mean any work of authorship, including the original version of the Work and any modifications or additions to that Work or Derivative Works thereof, that is intentionally submitted to Licensor for inclusion in the Work by the copyright owner or by an individual or Legal Entity authorized to submit on behalf of the copyright owner. For the purposes of this definition, "submitted" means any form of electronic, verbal, or written communication sent to the Licensor or its representatives, including but not limited to communication on electronic mailing lists, source code control systems, and issue tracking systems that are managed by, or on behalf of, the Licensor for the purpose of discussing and improving the Work, but excluding communication that is conspicuously marked or otherwise designated in writing by the copyright owner as "Not a Contribution."

"Contributor" shall mean Licensor and any individual or Legal Entity on behalf of whom a Contribution has been received by Licensor and subsequently incorporated within the Work.

2. Grant of Copyright License. Subject to the terms and conditions of this License, each Contributor hereby grants to You a perpetual, worldwide, non-exclusive, no-charge, royalty-free, irrevocable copyright license to reproduce, prepare Derivative Works of, publicly display, publicly perform, sublicense, and distribute the Work and such Derivative Works in Source or Object form.

3. Grant of Patent License. Subject to the terms and conditions of this License, each Contributor hereby grants to You a perpetual, worldwide, non-exclusive, no-charge, royalty-free, irrevocable (except as stated in this section) patent license to make, have made, use, offer to sell, sell, import, and otherwise transfer the Work, where such license applies only to those patent claims licensable by such Contributor that are necessarily infringed by their Contribution(s) alone or by combination of their Contribution(s) with the Work to which such Contribution(s) was submitted. If You institute patent litigation against any entity (including a cross-claim or counterclaim in a lawsuit) alleging that the Work or a Contribution incorporated within the Work constitutes direct or contributory patent infringement, then any patent licenses granted to You under this License for that Work shall terminate as of the date such litigation is filed.

4. Redistribution. You may reproduce and distribute copies of the Work or Derivative Works thereof in any medium, with or without modifications, and in Source or Object form, provided that you meet the following conditions:

1. You must give any other recipients of the Work or Derivative Works a copy of this License; and
2. You must cause any modified files to carry prominent notices stating that You changed the files; and
3. You must retain, in the Source form of any Derivative Works that You distribute, all copyright, patent, trademark, and attribution notices from the Source form of the Work, excluding those notices that do not pertain to any part of the Derivative Works; and
4. If the Work includes a "NOTICE" text file as part of its distribution, then any Derivative Works that You distribute must include a readable copy of the attribution notices contained within such NOTICE file, excluding those notices that do not pertain to any part of the Derivative Works, in at least one of the following places: within a NOTICE text file distributed as part of the Derivative Works; within the Source form or documentation, if provided along with the Derivative Works; or, within a display generated by the Derivative Works, if and wherever such third-party notices normally appear. The contents of the NOTICE file are for informational purposes only and do not modify the License. You may add Your own attribution notices within Derivative Works that You distribute, alongside or as an addendum to the NOTICE text from the Work, provided that such additional attribution notices cannot be construed as modifying the License. You may add Your own copyright statement to Your modifications and may provide additional or different license terms and conditions for use, reproduction, or distribution of Your modifications, or for any such Derivative Works as a whole, provided Your use, reproduction, and distribution of the Work otherwise complies with the conditions stated in this License.

5. Submission of Contributions. Unless You explicitly state otherwise, any Contribution intentionally submitted for inclusion in the Work by You to the Licensor shall be under the terms and conditions of this License, without any additional terms or conditions. Notwithstanding the above, nothing herein shall supersede or modify the terms of any separate license agreement you may have executed with Licensor regarding such Contributions.

6. Trademarks. This License does not grant permission to use the trade names, trademarks, service marks, or product names of the Licensor, except as required for reasonable and customary use in describing the origin of the Work and reproducing the content of the NOTICE file.

7. Disclaimer of Warranty. Unless required by applicable law or agreed to in writing, Licensor provides the Work (and each Contributor provides its Contributions) on an "AS IS" BASIS, WITHOUT WARRANTIES OR CONDITIONS OF ANY KIND, either express or implied, including, without limitation, any warranties or conditions of TITLE, NON-INFRINGEMENT, MERCHANTABILITY, or FITNESS FOR A PARTICULAR PURPOSE. You are solely responsible for determining the appropriateness of using or redistributing the Work and assume any risks associated with Your exercise of permissions under this License.

8. Limitation of Liability. In no event and under no legal theory, whether in tort (including negligence), contract, or otherwise, unless required by applicable law (such as deliberate and grossly negligent acts) or agreed to in writing, shall any Contributor be liable to You for damages, including any direct, indirect, special, incidental, or consequential damages of any character arising as a result of this License or out of the use or inability to use the Work (including but not limited to damages for loss of goodwill, work stoppage, computer failure or malfunction, or any and all other commercial damages or losses), even if such Contributor has been advised of the possibility of such damages.

9. Accepting Warranty or Additional Liability. While redistributing the Work or Derivative Works thereof, You may choose to offer, and charge a fee for, acceptance of support, warranty, indemnity, or other liability obligations and/or rights consistent with this License. However, in accepting such obligations, You may act only on Your own behalf and on Your sole responsibility, not on behalf of any other Contributor, and only if You agree to indemnify, defend, and hold each Contributor harmless for any liability incurred by, or claims asserted against, such Contributor by reason of your accepting any such warranty or additional liability.

END OF TERMS AND CONDITIONS

APPENDIX: How to apply the Apache License to your work

To apply the Apache License to your work, attach the following boilerplate notice, with the fields enclosed by brackets "[]" replaced with your own identifying information. (Don't include the brackets!) The text should be enclosed in the appropriate comment syntax for the file format. We also recommend that a file or class name and description of purpose be included on the same "printed page" as the copyright notice for easier identification within third-party archives.

Copyright [yyyy] [name of copyright owner]

*Licensed under the Apache License, Version 2.0 (the "License");
you may not use this file except in compliance with the License.
You may obtain a copy of the License at*

<http://www.apache.org/licenses/LICENSE-2.0>

*Unless required by applicable law or agreed to in writing, software
distributed under the License is distributed on an "AS IS" BASIS,
WITHOUT WARRANTIES OR CONDITIONS OF ANY KIND, either
express or implied.*

*See the License for the specific language governing permissions
and limitations under the License.*

Code Project Open 1.02 License

Copyright (c)

- Code Project – AlphaBlendTextBox – A transparent/translucent textbox for .NET (2003, Bob Bradley)
- Code Project – Animating Windows Forms (2006, Robert Rohde)
- Code Project – BarTender – Group your contents (2006, Robert Rohde)
- Code Project – Cabinet File (*.CAB) Compression and Extraction (2012, Elmue)
- Code Project – Data Encryption/Decryption using RijndaelManaged and PasswordDriveByt (2006, Nidheesh T Mani)
- Code Project – How to skin scrollbars for Panels, in C# (2006, Greg Ellis)
- Code Project – Simple Movie Database in C# using Microsoft Access (2008, Ivan Svogor)
- Code Project – Simplest PDF Generating API for JPEG Image Content (2008, Hao Hu)
- Code Project – Sinking connection points in C++ objects (2002, Len Holgate)
- Code Project – Windows Management Instrumentation (WMI) Implementation (2002, Paul LJ)

Preamble

This License governs Your use of the Work. This License is intended to allow developers to use the Source Code and Executable Files provided as part of the Work in any application in any form.

The main points subject to the terms of the License are:

- Source Code and Executable Files can be used in commercial applications;
- Source Code and Executable Files can be redistributed; and
- Source Code can be modified to create derivative works.

- No claim of suitability, guarantee, or any warranty whatsoever is provided. The software is provided "as-is".
- The Article accompanying the Work may not be distributed or republished without the Author's consent

This License is entered between You, the individual or other entity reading or otherwise making use of the Work licensed pursuant to this License and the individual or other entity which offers the Work under the terms of this License ("Author").

License

THE WORK (AS DEFINED BELOW) IS PROVIDED UNDER THE TERMS OF THIS CODE PROJECT OPEN LICENSE ("LICENSE"). THE WORK IS PROTECTED BY COPYRIGHT AND/OR OTHER APPLICABLE LAW. ANY USE OF THE WORK OTHER THAN AS AUTHORIZED UNDER THIS LICENSE OR COPYRIGHT LAW IS PROHIBITED.

BY EXERCISING ANY RIGHTS TO THE WORK PROVIDED HEREIN, YOU ACCEPT AND AGREE TO BE BOUND BY THE TERMS OF THIS LICENSE. THE AUTHOR GRANTS YOU THE RIGHTS CONTAINED HEREIN IN CONSIDERATION OF YOUR ACCEPTANCE OF SUCH TERMS AND CONDITIONS. IF YOU DO NOT AGREE TO ACCEPT AND BE BOUND BY THE TERMS OF THIS LICENSE, YOU CANNOT MAKE ANY USE OF THE WORK.

1. Definitions.

- a. **"Articles"** means, collectively, all articles written by Author which describes how the Source Code and Executable Files for the Work may be used by a user.
- b. **"Author"** means the individual or entity that offers the Work under the terms of this License.
- c. **"Derivative Work"** means a work based upon the Work or upon the Work and other pre-existing works.
- d. **"Executable Files"** refer to the executables, binary files, configuration and any required data files included in the Work.
- e. **"Publisher"** means the provider of the website, magazine, CD-ROM, DVD or other medium from or by which the Work is obtained by You.
- f. **"Source Code"** refers to the collection of source code and configuration files used to create the Executable Files.
- g. **"Standard Version"** refers to such a Work if it has not been modified, or has been modified in accordance with the consent of the Author, such consent being in the full discretion of the Author.
- h. **"Work"** refers to the collection of files distributed by the Publisher, including the Source Code, Executable Files, binaries, data files, documentation, whitepapers and the Articles.
- i. **"You"** is you, an individual or entity wishing to use the Work and exercise your rights under this License.

2. **Fair Use/Fair Use Rights.** Nothing in this License is intended to reduce, limit, or restrict any rights arising from fair use, fair dealing, first sale or other limitations on the exclusive rights of the copyright owner under copyright law or other applicable laws.
 3. **License Grant.** Subject to the terms and conditions of this License, the Author hereby grants You a worldwide, royalty-free, non-exclusive, perpetual (for the duration of the applicable copyright) license to exercise the rights in the Work as stated below:
 - a. You may use the standard version of the Source Code or Executable Files in Your own applications.
 - b. You may apply bug fixes, portability fixes and other modifications obtained from the Public Domain or from the Author. A Work modified in such a way shall still be considered the standard version and will be subject to this License.
 - c. You may otherwise modify Your copy of this Work (excluding the Articles) in any way to create a Derivative Work, provided that You insert a prominent notice in each changed file stating how, when and where You changed that file.
 - d. You may distribute the standard version of the Executable Files and Source Code or Derivative Work in aggregate with other (possibly commercial) programs as part of a larger (possibly commercial) software distribution.
 - e. The Articles discussing the Work published in any form by the author may not be distributed or republished without the Author's consent. The author retains copyright to any such Articles. You may use the Executable Files and Source Code pursuant to this License but you may not repost or republish or otherwise distribute or make available the Articles, without the prior written consent of the Author.
- Any subroutines or modules supplied by You and linked into the Source Code or Executable Files of this Work shall not be considered part of this Work and will not be subject to the terms of this License.

4. **Patent License.** Subject to the terms and conditions of this License, each Author hereby grants to You a perpetual, worldwide, non-exclusive, no-charge, royalty-free, irrevocable (except as stated in this section) patent license to make, have made, use, import, and otherwise transfer the Work.
5. **Restrictions.** The license granted in Section 3 above is expressly made subject to and limited by the following restrictions:
 - a. You agree not to remove any of the original copyright, patent, trademark, and attribution notices and associated disclaimers that may appear in the Source Code or Executable Files.
 - b. You agree not to advertise or in any way imply that this Work is a product of Your own.
 - c. The name of the Author may not be used to endorse or promote products derived from the Work without the prior written consent of the Author.
 - d. You agree not to sell, lease, or rent any part of the Work. This does not restrict you from including the Work or any part of the Work inside a larger software distribution that itself is being sold. The Work by itself, though, cannot be sold, leased or rented.
 - e. You may distribute the Executable Files and Source Code only under the terms of this License, and You must include a copy of, or the Uniform Resource Identifier for, this License with every copy of the Executable Files or Source Code You distribute and ensure that anyone receiving such Executable Files and Source Code agrees that the terms of this License apply to such Executable Files and/or Source Code. You may not offer or impose any terms on the Work that alter or restrict the terms of this License or the recipients' exercise of the rights granted hereunder. You may not sublicense the Work. You must keep intact all notices that refer to this License and to the disclaimer of warranties. You may not distribute the Executable Files or Source Code with any technological measures that control access or use of the Work in a manner inconsistent with the terms of this License.
 - f. You agree not to use the Work for illegal, immoral or improper purposes, or on pages containing illegal, immoral or improper material. The Work is subject to applicable export laws. You agree to comply with all such laws and regulations that may apply to the Work after Your receipt of the Work.
6. **Representations, Warranties and Disclaimer.** THIS WORK IS PROVIDED "AS IS", "WHERE IS" AND "AS AVAILABLE", WITHOUT ANY EXPRESS OR IMPLIED WARRANTIES OR CONDITIONS OR GUARANTEES. YOU, THE USER, ASSUME ALL RISK IN ITS USE, INCLUDING COPYRIGHT INFRINGEMENT, PATENT INFRINGEMENT, SUITABILITY, ETC. AUTHOR EXPRESSLY DISCLAIMS ALL EXPRESS, IMPLIED OR STATUTORY WARRANTIES OR CONDITIONS, INCLUDING WITHOUT LIMITATION, WARRANTIES OR CONDITIONS OF MERCHANTABILITY, MERCHANTABLE QUALITY OR FITNESS FOR A PARTICULAR PURPOSE, OR ANY WARRANTY OF TITLE OR NON-INFRINGEMENT, OR THAT THE WORK (OR ANY PORTION THEREOF) IS CORRECT, USEFUL, BUG-FREE OR FREE OF VIRUSES. YOU MUST PASS THIS DISCLAIMER ON WHENEVER YOU DISTRIBUTE THE WORK OR DERIVATIVE WORKS.
7. **Indemnity.** You agree to defend, indemnify and hold harmless the Author and the Publisher from and against any claims, suits, losses, damages, liabilities, costs, and expenses (including reasonable legal or attorneys' fees) resulting from or relating to any use of the Work by You.
8. **Limitation on Liability.** EXCEPT TO THE EXTENT REQUIRED BY APPLICABLE LAW, IN NO EVENT WILL THE AUTHOR OR THE PUBLISHER BE LIABLE TO YOU ON ANY LEGAL THEORY FOR ANY SPECIAL, INCIDENTAL, CONSEQUENTIAL, PUNITIVE OR EXEMPLARY DAMAGES ARISING OUT OF THIS LICENSE OR THE USE OF THE WORK OR OTHERWISE, EVEN IF THE AUTHOR OR THE PUBLISHER HAS BEEN ADVISED OF THE POSSIBILITY OF SUCH DAMAGES.
9. **Termination.**
 - a. This License and the rights granted hereunder will terminate automatically upon any breach by You of any term of this License. Individuals or entities who have received Derivative Works from You under this License, however, will not have their licenses terminated provided such individuals or entities remain in full compliance with those licenses. Sections 1, 2, 6, 7, 8, 9, 10 and 11 will survive any termination of this License.
 - b. If You bring a copyright, trademark, patent or any other infringement claim against any contributor over infringements You claim are made by the Work, your License from such contributor to the Work ends automatically.
 - c. Subject to the above terms and conditions, this License is perpetual (for the duration of the applicable copyright in the Work). Notwithstanding the above, the Author reserves the right to release the Work under different license terms or to stop distributing the Work at any time; provided, however that any such election will not serve to withdraw this License (or any other license that has been, or is required to be, granted under the terms of this License), and this License will continue in full force and effect unless terminated as stated above.
10. **Publisher.** The parties hereby confirm that the Publisher shall not, under any circumstances, be responsible for and shall not have any liability in respect of the subject matter of this License. The Publisher makes no warranty whatsoever in connection with the Work and shall not be liable to You or any party on any legal theory for any damages whatsoever, including without limitation any general, special, incidental or consequential damages arising in connection to this license. The Publisher reserves the right to cease making the Work available to You at any time without notice
11. **Miscellaneous**
 - a. This License shall be governed by the laws of the location of the head office of the Author or if the Author is an individual, the laws of location of the principal place of residence of the Author.
 - b. If any provision of this License is invalid or unenforceable under applicable law, it shall not affect the validity or enforceability of the remainder of the terms of this License, and without further action by the parties to this License, such provision shall be reformed to the minimum extent necessary to make such provision valid and enforceable.
 - c. No term or provision of this License shall be deemed waived and no breach consented to unless such waiver or consent shall be in writing and signed by the party to be charged with such waiver or consent.
 - d. This License constitutes the entire agreement between the parties with respect to the Work licensed herein. There are no understandings, agreements or representations with respect to the Work not specified herein. The Author shall not be bound by any additional provisions that may appear in any communication from You. This License may not be modified without the mutual written agreement of the Author and You.



SALES NETWORK

HEAD OFFICE

6, Pangyo-ro 319beon-gil, Bundang-gu, Seongnam-si, Gyeonggi-do, 463-400 Rep. of KOREA
Tel : +82-70-7147-8753, 8764 Fax : +82-31-8018-3740
www.samsungsecurity.com

SAMSUNG TECHWIN AMERICA Inc.

100 Challenger Rd. Suite 700 Ridgefield Park, NJ 07660
Toll Free : +1-877-213-1222 Direct : +1-201-325-6920
Fax : +1-201-373-0124
www.samsung-security.com

SAMSUNG TECHWIN EUROPE LTD.

2nd Floor, No. 5 The Heights, Brooklands, Weybridge, Surrey,
KT13 0NY, UK
Tel : +44-1932-82-6700 Fax : +44-1932-82-6701
www.samsungsecurity.co.uk

www.samsungsecurity.com
www.samsungipolis.com