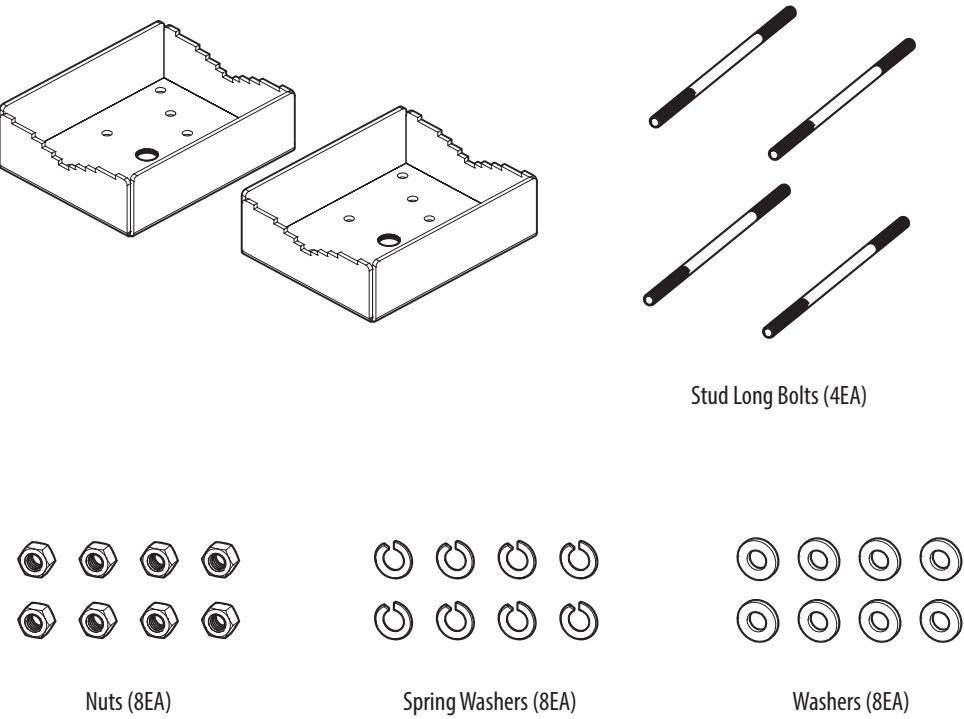


Pole Mount

SBU-500PM



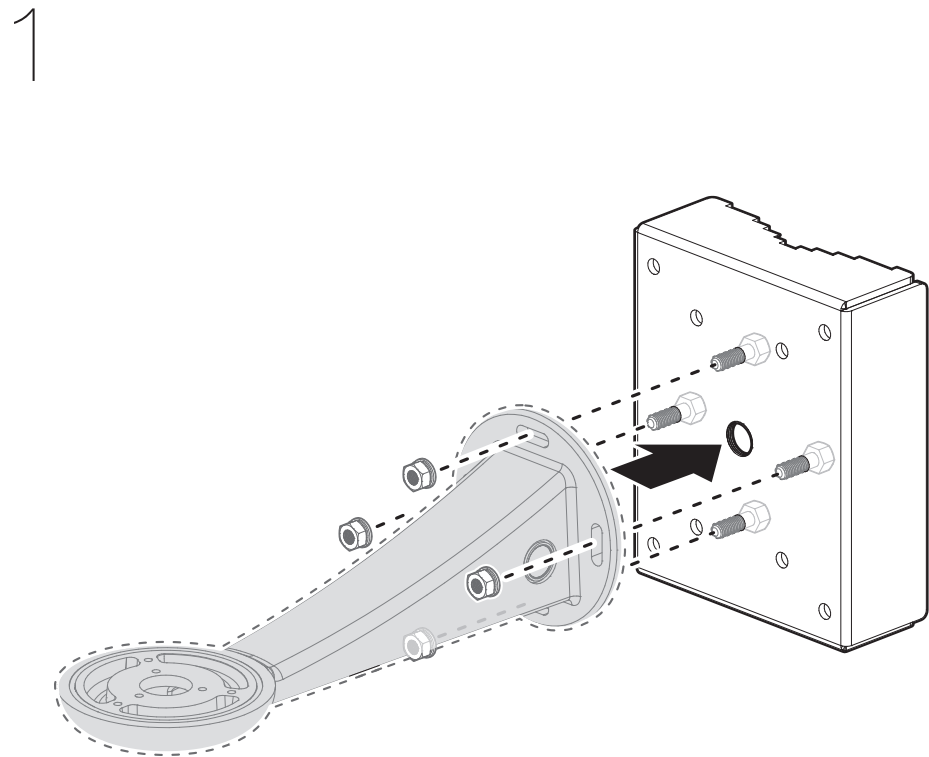
Package



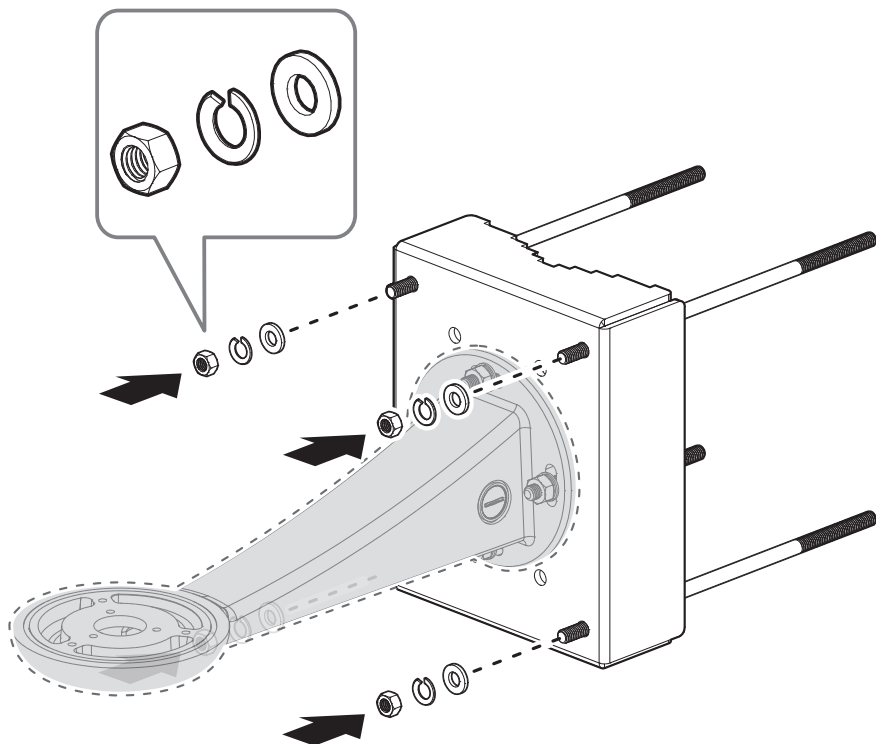
Installation Precautions

- Make sure that the installation place can endure at least 4 times of the total weight of the Pole Mount and Camera.
- Each anchor screw must be capable of withstanding an extraction force of 700 kg.
- Supported pole size is between ø100 and ø148 mm.
- We recommend to use this model with installing from one side and not guarantee the usage with installation from both sides.

Installation



2



3

