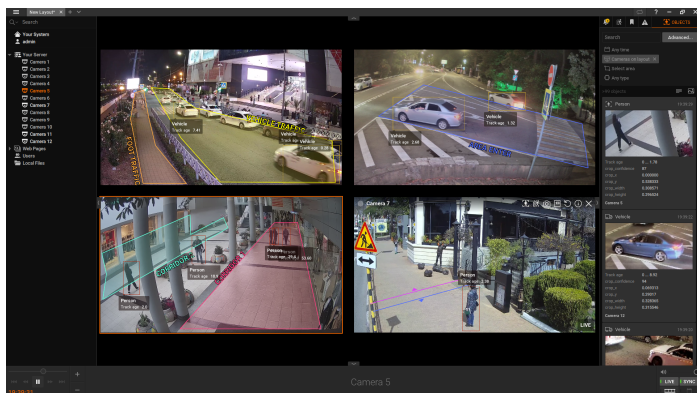


# AI Analytics Plugin

## for Wisenet WAVE VMS



The AI Plugin for Wisenet WAVE VMS enhances the effectiveness of your surveillance operations by enabling AI analytics on cameras without embedded analytics capabilities.

Surveillance operators can configure the analytics and create custom rules for triggering events within the Wisenet WAVE VMS to leverage these alerts and make informed decisions in real-world situations.

## Key Features

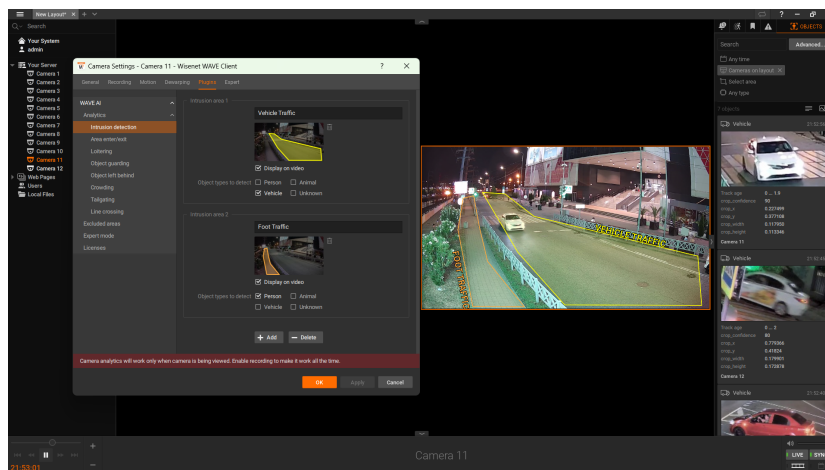
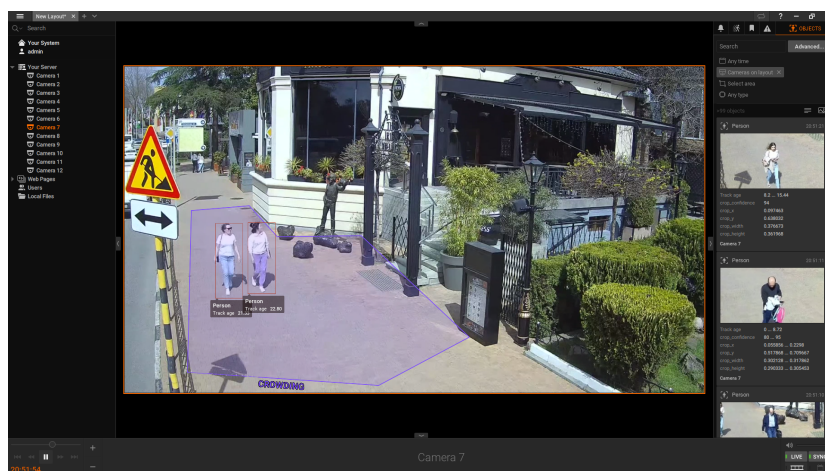
Key features of this integration include the detection of people, vehicles, and animals with a variety of associated analytics.

- Intrusion detection
- Area enter/exit
- Loitering
- Object guarding
- Object left behind
- Crowding
- Tailgating
- Line crossing

### WRR-P-S204(X) / WRR-P-S202(X) / WRR-P-S206S / WRR-P-S206S1

SYSTEM	
Video Management Software	WAVE VMS
Plugin	WAVE AI Analytics Plugin
Compatible Hardware	WRR-P-S204(X); WRR-P-S202(X); WRR-P-S206S WRR-P-S206S1
Analytics	Intrusion detection; Area enter/exit; Loitering; Object guarding; Object left behind; Crowding; Tailgating; Line crossing
Detection Classes	People; Vehicles; Animals; Unknown
AI Channels	±16 camera streams running AI analytics in standard operating mode *
System Storage Usage	1.06% CPU usage per camera stream running AI analytics.
Compatible OS	Windows 10 Professional; Windows Server 2016 Standard; Windows 10 IoT Enterprise LTSC 2021; Windows Server 2019/22 Standard; Windows 10 IoT Enterprise ; Ubuntu 22 or higher; Debian 11
Required Disk Space for Installation	Windows: 7GB Linux: 5GB

- \* Learn more about operating modes in the AI Plugin User Manual.
- \* Running the WAVE Client on the same machine may degrade device performance and reduce the total number of AI camera streams supported.



Design and specifications are subject to change without notice. The latest product information / specification can be found at [HanwhaVision.com](https://www.hanwhavision.com)

Hanwha Vision is formerly known as Hanwha Techwin.