

WISeNeT

NETWORK CAMERA

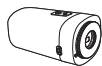
Quick Guide

SNB-5003/SNB-5004/SND-5083/SND-5084



WHAT'S INCLUDED

- SNB-5003



Camera



CD



Quick Guide (Optional)



Warranty card
(Optional)



Cable for the testing
monitor

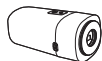


6-position Terminal Block



CS/C Lens (Options)

- SNB-5004



Camera



CD



Quick Guide (Optional)



Warranty card
(Optional)



Cable for the testing
monitor



6-position Terminal Block



CS/C Lens (Options)

- SND-5083



Camera



CD



Quick Guide (Optional)



Warranty card
(Optional)



Cable for the testing
monitor



Power Terminal Block



Alarm Cable



Screw



Template



Indoor Buried Housing
(Options)

- SND-5084



Camera



CD



Quick Guide (Optional)



Warranty card
(Optional)



Cable for the testing
monitor



Power Terminal Block



Alarm Cable



Screw

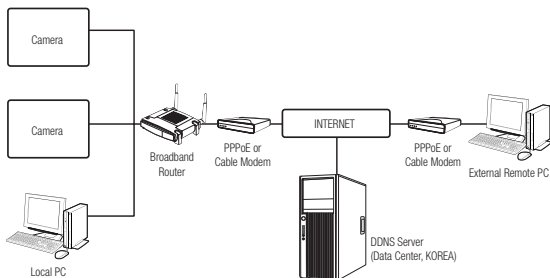


Template



Indoor Buried Housing
(Options)

NETWORK WIRING DIAGRAM



MANUAL NETWORK SETUP

Run <IP Installer_v2.XX.exe> to display the camera search list.

At the initial startup, both [Auto Set] and [Manual Set] will be grayed out.



- For cameras found with the IPv6 setting, these buttons will be grayed out as the cameras do not support this function.

- Select a camera in the search list.
- Click [Manual Set].
The Manual Setting dialog appears.
- In the <Address> pane, provide the necessary information.
- In the <Port> pane, provide necessary information.

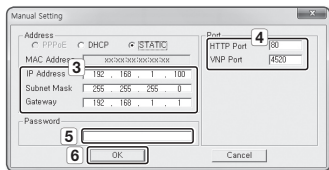
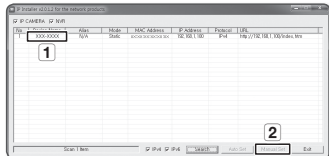
- HTTP Port : Used to access the camera using the Internet browser, defaulted to 80.
- VNP Port : Used to control the video signal transfer, defaulted to 4520.

- Enter the password.
The default password is "4321".



- In the IP installer, you can use the initial password, "4321" to set IP Address, Subnet Mask, Gateway, HTTP Port, VNP Port, IP type. After changing the network interface, for better security, access the web viewer and change the password.
- If you want to set the password, refer to "Password setting". (page 5)

- Click [OK].
Manual network setup will be completed.



CONNECTING TO THE CAMERA FROM A SHARED LOCAL PC

1. Run the IP Installer.
It will scan for connected cameras and display them as a list.
2. Double-click a camera to access.
The Internet browser starts and connects to the camera.



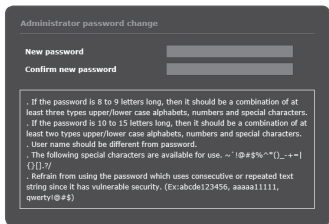
- Access to the camera can also be gained by typing the camera's IP address in the address bar of the Internet browser.

PASSWORD SETTING

When you access the product for the first time, you must register the login password.
When the “**Password change**” window appears, enter the new password.



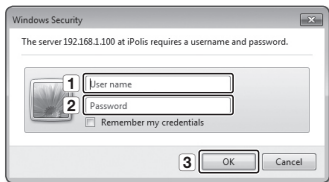
- For a new password with 8 to 9 digits, you must use at least 3 of the following: uppercase/lowercase letters, numbers and special characters. For a password with 10 to 15 digits, you must use at least 2 types of those mentioned.
 - Special characters that are allowed: ~!@#\$%^&*()_-=+{}[]?/
- For higher security, you are not recommended to repeat the same characters or consecutive keyboard inputs for your passwords.
- If you lost your password, you can press the [RESET] button to initialize the product. So, don't lose your password by using a memo pad or memorizing it.



LOGIN

Whenever you access the camera, the login window appears.
Enter the User ID and password to access the camera.

- 1 Enter “**admin**” in the <User Name> input box.
- 2 Enter the password in the <Password> input field.
- 3 Click [OK].



INSTALLING WebViewer PLUGIN

If connecting to a camera for the first time, you will see the installation message. Then, install the required WebViewer Plugin to access the camera and control the video from it in real time.



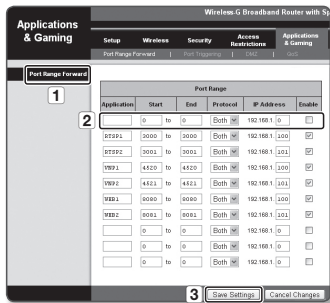
- If the plug-in installation file download status is suspended at 99% in the Internet Explorer browser, retry it after selecting "Release SmartScreen filter" in "Tool → SmartScreen filter".
- In your internet explorer, if you need to move to the installation screen after installing the webviewer plugin, check whether webviewer_activeplugin_lib.control in the "Tool → Additional Function Management" menu is "Activated". If not, and if there is a persisting problem, then select "Tools → Internet Options → General" and delete all the search records.

CONNECTING TO THE CAMERA FROM A REMOTE PC VIA THE INTERNET

Since using the IP Installer on a remote computer that is not in the Broadband Router's network cluster is not allowed, users can access cameras within a Broadband Router's network by using the camera's DDNS URL.

Port Range Forward (Port Mapping) Setup

- 1 From the Setup menu of the Broadband Router, select **<Applications & Gaming>** - **<Port Range Forward>**.
- 2 Select **<TCP>** and **<UDP Port>** for each connected camera to the Broadband Router. Each port number for the Broadband Router should match that specified in **<Setup>** - **<Basic>** - **<IP & Port>** from the camera's web viewer menu.
- 3 When done, click **[Save Settings]**. Your settings will be saved.






- Above sample instructions are based on the CISCO's Broadband Router.
- The settings may differ depending on the connected Broadband Router model. For more information, refer to the user manual of the applicable router.
- Port forwarding can be done without additional router setup if the router supports the UPnP (Universal Plug and Play) function. After connecting the network camera, set **<Quick connect>** of **<Wisenet DDNS>** to **<On>** in the **"Setup → Network → DDNS"** menu.

Registering with DDNS

1. Visit the Wisenet DDNS web site (<http://ddns.hanwha-security.com>) and sign in with a registered account.
2. From the top menu bar, select **<DDNS SERVICE>** - **<MY DDNS>**.
3. Click **[PRODUCT REGISTRATION]**.
4. Please enter the product ID and fill in the items displayed.
5. Click **[REGISTRATION]**.

Connecting the camera to Wisenet DDNS

1. On the Live screen of the camera, click **[Setup ()]**.
2. Select **<Network ()>**.
3. Click **<DDNS>**.
4. From the DDNS setup page, set **<DDNS>** to **<Wisenet DDNS>**.
5. Provide the **<Product ID>** that you registered product ID with the DDNS site.
6. Click **[Apply ()]**.
When the connection is successfully made, you will see the message of **<(Success)>** on the screen.



Hanwha Techwin cares for the environment at all product manufacturing stages, and is taking measures to provide customers with more environmentally friendly products.

The Eco mark represents Hanwha Techwin's devotion to creating environmentally friendly products, and indicates that the product satisfies the EU RoHS Directive.



Correct Disposal of This Product (Waste Electrical & Electronic Equipment)

(Applicable in the European Union and other European countries with separate collection systems)

This marking on the product, accessories or literature indicates that the product and its electronic accessories (e.g. charger, headset, USB cable) should not be disposed of with other household waste at the end of their working life. To prevent possible harm to the environment or human health from uncontrolled waste disposal, please separate these items from other types of waste and recycle them responsibly to promote the sustainable reuse of material resources.

Household users should contact either the retailer where they purchased this product, or their local government office, for details of where and how they can take these items for environmentally safe recycling.

Business users should contact their supplier and check the terms and conditions of the purchase contract.

This product and its electronic accessories should not be mixed with other commercial wastes for disposal.



Correct disposal of batteries in this product

(Applicable in the European Union and other European countries with separate battery return systems.)

This marking on the battery, manual or packaging indicates that the batteries in this product should not be disposed of with other household waste at the end of their working life. Where marked, the chemical symbols Hg, Cd or Pb indicate that the battery contains mercury, cadmium or lead above the reference levels in EC Directive 2006/66. If batteries are not properly disposed of, these substances can cause harm to human health or the environment.

To protect natural resources and to promote material reuse, please separate batteries from other types of waste and recycle them through your local, free battery return system.

Head Office

6, Pangyo-ro 319 beon-gil, Bundang-gu, Seongnam-si,
Gyeonggi-do, 463-400 Rep. of KOREA
Tel : +82.70.7147.8753 Fax : +82.31.8018.3740
www.hanwha-security.com

Hanwha Techwin America

500 Frank W. Burr Blvd. Suite 43 Teaneck, NJ 07666
Toll Free +1.877.213.1222 Direct +1.201.325.6920
Fax +1.201.373.0124
www.hanwhasecurity.com

Hanwha Techwin Europe

Heriot House, Heriot Road, Chertsey, Surrey, KT16 9DT, United Kingdom
Tel +44.1932.57.8100 Fax +44.1932.57.8101
www.hanwha-security.eu

Hanwha Techwin(Tianjin) Co.Ltd

No.11, Weiliu Rd., Micro-Electronic Industrial Park, Jingang Road Tianjin 300385, China
Tel : +86.22.2388.7788
www.hanwha-security.cn

Hanwha Techwin Middle East FZE

JAFZA View 18, 20th floor, office 2001, 2002, 2003, Downtown Jebel Ali,
Dubai, United Arab Emirates
<http://hanwha-security.com>
