

SAMSUNG

# **BEYOND** series

*Beyond Your Expectation*

## 1280H Analog Camera & DVR



# Product Comparison Chart

Box / IR Bullet / Dome



**BEYOND  
SCB-5005**



**BEYOND  
SCB-5003**



**BEYOND  
SCB-5000**



**BEYOND  
SCO-5083R**



**BEYOND  
SCD-5083**

|             | TV Lines                       | 1000TVL   | 1000TVL  | 1000TVL   | 1000TVL  | 1000TVL  |
|-------------|--------------------------------|---|--|---|--|--|
| VIDEO       | Imaging Device                 | 1/3" 1.3M CMOS  | 1/3" 1.3M CMOS   | 1/3" 1.3M CMOS  | 1/3" 1.3M CMOS   | 1/3" 1.3M CMOS   |
|             | Horizontal Resolution          | Color : 1000TV lines  | Color : 1000TV lines   | Color : 1000TV lines  | Color : 1000TV lines   | Color : 1000TV lines   |
|             | Min. Illumination (30 IRE)     | Color : 0.01Lux<br>B/W : 0.001Lux   | Color : 0.01Lux<br>B/W : 0.001Lux  | Color : 0.01Lux   | Color : 0.02Lux<br>B/W : 0Lux (IR LED on)                                      | Color : 0.01Lux<br>B/W : 0.001Lux                                |
|             | Lens                           | -   | -  | -   | 3 ~ 10mm (3.3x)<br>V/F (F1.4)  | 2.8 ~ 10.5mm (3.8x)<br>V/F (F1.2)                                |
|             | IR Viewable Length             | -   | -  | -   | 50m (164.04ft)   | -  |
|             | Angular Field of View          | -   | -  | -   | H : 82.0°(Wide) ~ 26.5°(Tele)<br>V : 59.7°(Wide) ~ 19.9°(Tele)                 | H : 91.5°(Wide) ~ 27.7°(Tele) /<br>V : 68.3°(Wide) ~ 20.8°(Tele) |
|             | Pan / Tilt / Rotate            | -   | -  | -   | -  | 0° ~ 354° / 0° ~ 68° / 0° ~ 355°                                 |
| OPERATIONAL | Day & Night                    | True (ICR)  | True (ICR)   | Electrical  | True (ICR)   | True (ICR)   |
|             | Backlight Compensation         | WDR (120dB)   | WDR (120dB)  | BLC / HLC   | WDR (120dB)  | WDR (120dB)  |
|             | Digital Noise Reduction        | SSNRIV  | SSNRIV   | SSNRIV  | SSNRIV   | SSNRIV   |
|             | Motion Detection               | Support   | Support  | Support   | Support  | Support  |
|             | Privacy Masking                | 24 zones<br>(4 points polygonal masking)                                  | 24 zones<br>(4 points polygonal masking)   | 24 zones<br>(4 points polygonal masking)  | 24 zones<br>(4 points polygonal masking)                                       | 24 zones<br>(4 points polygonal masking)                         |
|             | Intelligent Video Analytics    | Fence, (Dis)Appear,<br>Counting   | Fence, (Dis)Appear,<br>Counting  | -   | Fence, (Dis)Appear,<br>Counting  | Fence, (Dis)Appear,<br>Counting                                  |
| FEATURES    | Alarm I/O                      | 0 / 1   | 0 / 1  | -   | 0 / 1  | 0 / 1  |
|             | Communication                  | Coax : Pelco-C (Coaxitron),<br>RS-485                                     | Coax : Pelco-C (Coaxitron),<br>RS-485  | Coax : Pelco-C (Coaxitron)  | Coax : Pelco-C (Coaxitron),<br>RS-485  | Coax : Pelco-C (Coaxitron)                                       |
|             | Environment Protection         | -   | -  | -   | IP66, IK10   | -  |
|             | Operating Temperature          | -10°C ~ +55°C<br>(+14°F ~ +131°F)   | -10°C ~ +55°C<br>(+14°F ~ +131°F)  | -10°C ~ +55°C<br>(+14°F ~ +131°F)   | -30°C ~ +55°C<br>(-22°F ~ +131°F)<br>*Start up above -10°C (+14°F)             | -10°C ~ +55°C<br>(+14°F ~ +131°F)                                |
|             | Power                          | AC 24V & DC 12V<br>(Max. 6.0W)  | N/P : AC 24V & DC 12V<br>(Max. 6.0W),<br>PH : AC 230V<br>(Max 6.0W)  | N/P : AC 24V & DC 12V<br>(Max. 3.7W),<br>ND/PD : DC 12V (Max. 2.7W)<br>PH : AC 230V (Max. 4.6W)   | AC 24V & DC 12V<br>(Max. 9.5W)   | AC 24V & DC 12V<br>(Max. 5.6W)                                   |
|             | Dimensions (WxHxD) /<br>Weight | 73.1 x 67.2 x 123.9mm<br>(2.88" x 2.65" x 4.88")<br>300g (0.66 lb)        | N/P : 68.4 x 59.6 x 92.7mm<br>(2.69" x 2.35" x 3.65")<br>210g (0.46 lb)<br>PH : 68.3 x 59.6 x 116.6mm<br>(2.69" x 2.35" x 4.59")<br>411g (0.91 lb) | 68.4 x 59.6 x 92.7mm<br>(2.69" x 2.35" x 3.65")<br>N/P/PD : 200g (0.44 lb)<br>ND : 175g (0.39 lb) | Ø78.0 x 272.8mm<br>(3.07" x 10.74")<br>(Without sun shield)<br>1.5Kg (3.3 1lb) | Ø119.8 x 101.8mm<br>(Ø4.72" x 4.01")<br>535g (1.18 lb)           |
|             | Additional Features            | Simple focus, P-iris,<br>Digital image stabilization,<br>Defog, Tampering | Digital image stabilization,<br>Defog, Tampering   | Digital image stabilization,<br>Defog, Tampering  | Digital image stabilization,<br>Defog, Tampering                               | Digital image stabilization,<br>Defog, Tampering                 |

# Product Comparison Chart

Dome / IR Dome



**BEYOND**  
**SCD-5082**



**BEYOND**  
**SCD-5080**



**BEYOND**  
**SCD-5030**



**BEYOND**  
**SCD-5020**



**BEYOND**  
**SCD-5083R**

|             |                                | 1000TVL  | 1000TVL  | 1000TVL   | 1000TVL   | 1000TVL  |
|-------------|--------------------------------|--|--|---|---|--|
| VIDEO       | TV Lines                       | 1000TVL  | 1000TVL  | 1000TVL   | 1000TVL   | 1000TVL  |
|             | Imaging Device                 | 1/3" 1.3M CMOS   | 1/3" 1.3M CMOS   | 1/3" 1.3M CMOS  | 1/3" 1.3M CMOS  | 1/3" 1.3M CMOS   |
|             | Horizontal Resolution          | Color : 1000TV lines   | Color : 1000TV lines   | Color : 1000TV lines                                  | Color : 1000TV lines                                  | Color : 1000TV lines   |
|             | Min. Illumination (30 IRE)     | Color : 0.02Lux<br>B/W : 0.002Lux                                | Color : 0.02Lux  | Color : 0.05Lux                                       | Color : 0.05Lux                                       | Color : 0.02Lux<br>B/W : 0Lux (IR LED on)                        |
|             | Lens                           | 3 ~ 10mm (3.3x)<br>V/F (F1.4)                                    | 3 ~ 10mm (3.3x)<br>V/F (F1.4)                                    | 6mm fixed (F1.8)                                      | 3.6mm fixed (F1.8)                                    | 3 ~ 10mm (3.3x)<br>V/F (F1.4)                                    |
|             | IR Viewable Length             | -  | -  | -   | -   | 30m (98.43ft)  |
|             | Angular Field of View          | H : 82.0°(Wide) ~ 26.5°(Tele) /<br>V : 59.7°(Wide) ~ 19.9°(Tele) | H : 82.0°(Wide) ~ 26.5°(Tele) /<br>V : 59.7°(Wide) ~ 19.9°(Tele) | H : 46.5° / V : 34.5° / D : 59.3°                     | H : 78° / V : 62.5° / D : 100°                        | H : 82.0°(Wide) ~ 26.5°(Tele) /<br>V : 59.7°(Wide) ~ 19.9°(Tele) |
|             | Pan / Tilt / Rotate            | 0° ~ 354° / 0° ~ 68° / 0° ~ 355°                                 | 0° ~ 354° / 0° ~ 68° / 0° ~ 355°                                 | 0° ~ 352° / 0° ~ 75° / 0° ~ 348°                      | 0° ~ 352° / 0° ~ 75° / 0° ~ 348°                      | 0° ~ 354° / 0° ~ 68° / 0° ~ 355°                                 |
| OPERATIONAL | Day & Night                    | True (ICR)   | Electrical   | Electrical  | Electrical  | True (ICR)   |
|             | Backlight Compensation         | BLC / HLC  | BLC / HLC  | BLC / HLC   | BLC / HLC   | WDR (120dB)  |
|             | Digital Noise Reduction        | SSNRIV   | SSNRIV   | SSNRIV  | SSNRIV  | SSNRIV   |
|             | Motion Detection               | Support  | Support  | Support   | Support   | Support  |
|             | Privacy Masking                | 24 zones<br>(4 points polygonal masking)                         | 24 zones<br>(4 points polygonal masking)                         | 24 zones<br>(4 points polygonal masking)              | 24 zones<br>(4 points polygonal masking)              | 24 zones<br>(4 points polygonal masking)                         |
|             | Intelligent Video Analytics    | -  | -  | -   | -   | Fence, (Dis)Appear,<br>Counting                                  |
|             |                                |  |  |   |   |  |
| FEATURES    | Alarm I/O                      | -  | -  | -   | -   | 0 / 1  |
|             | Communication                  | Coax : Pelco-C (Coaxitron)                                       | Coax : Pelco-C (Coaxitron)                                       | Coax : Pelco-C (Coaxitron)                            | Coax : Pelco-C (Coaxitron)                            | Coax : Pelco-C (Coaxitron)                                       |
|             | Environment Protection         | -  | -  | -   | -   | -  |
|             | Operating Temperature          | -10°C ~ +55°C<br>(+14°F ~ +131°F)                                | -10°C ~ +55°C<br>(+14°F ~ +131°F)                                | -10°C ~ +55°C<br>(+14°F ~ +131°F)                     | -10°C ~ +55°C<br>(+14°F ~ +131°F)                     | -10°C ~ +55°C<br>(+14°F ~ +131°F)                                |
|             | Power                          | AC 24V & DC 12V<br>(Max. 5.6W)                                   | AC 24V & DC 12V<br>(Max. 3.5W)                                   | DC 12V<br>(Max. 2.8W)                                 | DC 12V<br>(Max. 2.8W)                                 | AC 24V & DC 12V<br>(Max. 6.0W)                                   |
|             | Dimensions (WxHxD) /<br>Weight | Ø119.8 x 98.8mm<br>(Ø4.72" x 3.89")<br>420g (0.93 lb)            | Ø119.8 x 101.8mm<br>(Ø4.72" x 4.01")<br>520g (1.15 lb)           | Ø107.6 x 84.0mm<br>(Ø4.24" x 3.31")<br>371g (0.82 lb) | Ø107.6 x 84.0mm<br>(Ø4.24" x 3.31")<br>394g (0.87 lb) | Ø119.8 x 101.8mm<br>(Ø4.72" x 4.01")<br>550g (1.21 lb)           |
|             | Additional Features            | Digital image stabilization,<br>Defog, Tampering                 | Digital image stabilization,<br>Defog, Tampering                 | Digital image stabilization,<br>Defog, Tampering      | Digital image stabilization,<br>Defog, Tampering      | Digital image stabilization,<br>Defog, Tampering                 |

# Product Comparison Chart

Vandal-Resistant / IR Vandal-Resistant



**BEYOND  
SCV-5085**



**BEYOND  
SCV-5083**



**BEYOND  
SCV-5082**



**BEYOND  
SCV-5083R**

| TV Lines    |                                | 1000TVL  | 1000TVL  | 1000TVL  | 1000TVL  |
|-------------|--------------------------------|--|--|--|--|
| VIDEO       | Imaging Device                 | 1/3" 1.3M CMOS   | 1/3" 1.3M CMOS   | 1/3" 1.3M CMOS   | 1/3" 1.3M CMOS   |
|             | Horizontal Resolution          | Color : 1000TV lines   | Color : 1000TV lines   | Color : 1000TV lines   | Color : 1000TV lines   |
|             | Min. Illumination (50 IRE)     | Color : 0.01Lux<br>B/W : 0.001Lux                                  | Color : 0.01Lux<br>B/W : 0.001Lux                                  | Color : 0.02Lux<br>B/W : 0.002Lux                                  | Color : 0.02Lux<br>B/W : 0Lux (IR LED on)                          |
|             | Lens                           | 3 ~ 8.5mm (2.8x)<br>Motorized V/F (F1.2)                           | 2.8 ~ 10.5mm (3.8x)<br>V/F (F1.2)                                  | 3 ~ 10mm (3.3x)<br>V/F (F1.4)                                      | 3 ~ 10mm (3.3x)<br>V/F (F1.4)                                      |
|             | IR Viewable Length             | -  | -  | -  | 30m (98.43ft)  |
|             | Angular Field of View          | H : 105.5°(Wide) ~ 37.1°(Tele) /<br>V : 57.5°(Wide) ~ 21°(Tele)    | H : 91.5°(Wide) ~ 27.7°(Tele) /<br>V : 68.3°(Wide) ~ 20.8°(Tele)   | H : 82.0°(Wide) ~ 26.5°(Tele) /<br>V : 59.7°(Wide) ~ 19.9°(Tele)   | H : 82.0°(Wide) ~ 26.5°(Tele) /<br>V : 59.7°(Wide) ~ 19.9°(Tele)   |
|             | Pan / Tilt / Rotate            | 0° ~ 354° / 0° ~ 68° / 0° ~ 355°                                   | 0° ~ 354° / 0° ~ 68° / 0° ~ 355°                                   | 0° ~ 354° / 0° ~ 68° / 0° ~ 355°                                   | 0° ~ 354° / 0° ~ 68° / 0° ~ 355°                                   |
| OPERATIONAL | Day & Night                    | True (ICR)   | True (ICR)   | True (ICR)   | True (ICR)   |
|             | Backlight Compensation         | WDR (120dB)  | WDR (120dB)  | BLC / HLC  | WDR (120dB)  |
|             | Digital Noise Reduction        | SSNRIV   | SSNRIV   | SSNRIV   | SSNRIV   |
|             | Motion Detection               | Support  | Support  | Support  | Support  |
|             | Privacy Masking                | 24 zones<br>(4 points polygonal masking)                           | 24 zones<br>(4 points polygonal masking)                           | 24 zones<br>(4 points polygonal masking)                           | 24 zones<br>(4 points polygonal masking)                           |
|             | Intelligent Video Analytics    | Fence, (Dis)Appear,<br>Counting                                    | Fence, (Dis)Appear,<br>Counting                                    | -  | Fence, (Dis)Appear,<br>Counting                                    |
|             |                                |  |  |  |  |
| FEATURES    | Alarm I/O                      | 0 / 1  | 0 / 1  | -  | 0 / 1  |
|             | Communication                  | Coax : Pelco-C (Coaxitron)   | Coax : Pelco-C (Coaxitron)   | Coax : Pelco-C (Coaxitron)   | Coax : Pelco-C (Coaxitron)   |
|             | Environment Protection         | IP66, IK10   | IP66, IK10   | IP66, IK10   | IP66, IK10   |
|             | Operating Temperature          | -30°C ~ +55°C<br>(-22°F ~ +131°F)<br>*Start up above -10°C (+14°F) | -30°C ~ +55°C<br>(-22°F ~ +131°F)<br>*Start up above -10°C (+14°F) | -30°C ~ +55°C<br>(-22°F ~ +131°F)<br>*Start up above -10°C (+14°F) | -30°C ~ +55°C<br>(-22°F ~ +131°F)<br>*Start up above -10°C (+14°F) |
|             | Power                          | AC 24V & DC 12V<br>(Max. 5.0W)                                     | AC 24V & DC 12V<br>(Max. 5.6W)                                     | AC 24V & DC 12V<br>(Max. 5.6W)                                     | AC 24V & DC 12V<br>(Max. 6.0W)                                     |
|             | Dimensions (WxHxD) /<br>Weight | Ø137.0 x 106.1mm<br>(Ø5.39" x 4.18")<br>772g (1.7 lb)              | Ø137.0 x 106.1mm<br>(Ø5.39" x 4.18")<br>720g (1.59 lb)             | Ø137.0 x 106.1mm<br>(Ø5.39" x 4.18")<br>730g (1.61 lb)             | Ø137.0 x 106.1mm<br>(Ø5.39" x 4.18")<br>750g (1.65 lb)             |
|             | Additional Features            | Digital image stabilization,<br>Defog, Tampering                   | Digital image stabilization,<br>Defog, Tampering                   | Digital image stabilization,<br>Defog, Tampering                   | Digital image stabilization,<br>Defog, Tampering                   |

# Product Comparison Chart

DVR



**BEYOND**  
**SRD-1676D**



**BEYOND**  
**SRD-1656D**



**BEYOND**  
**SRD-876D**



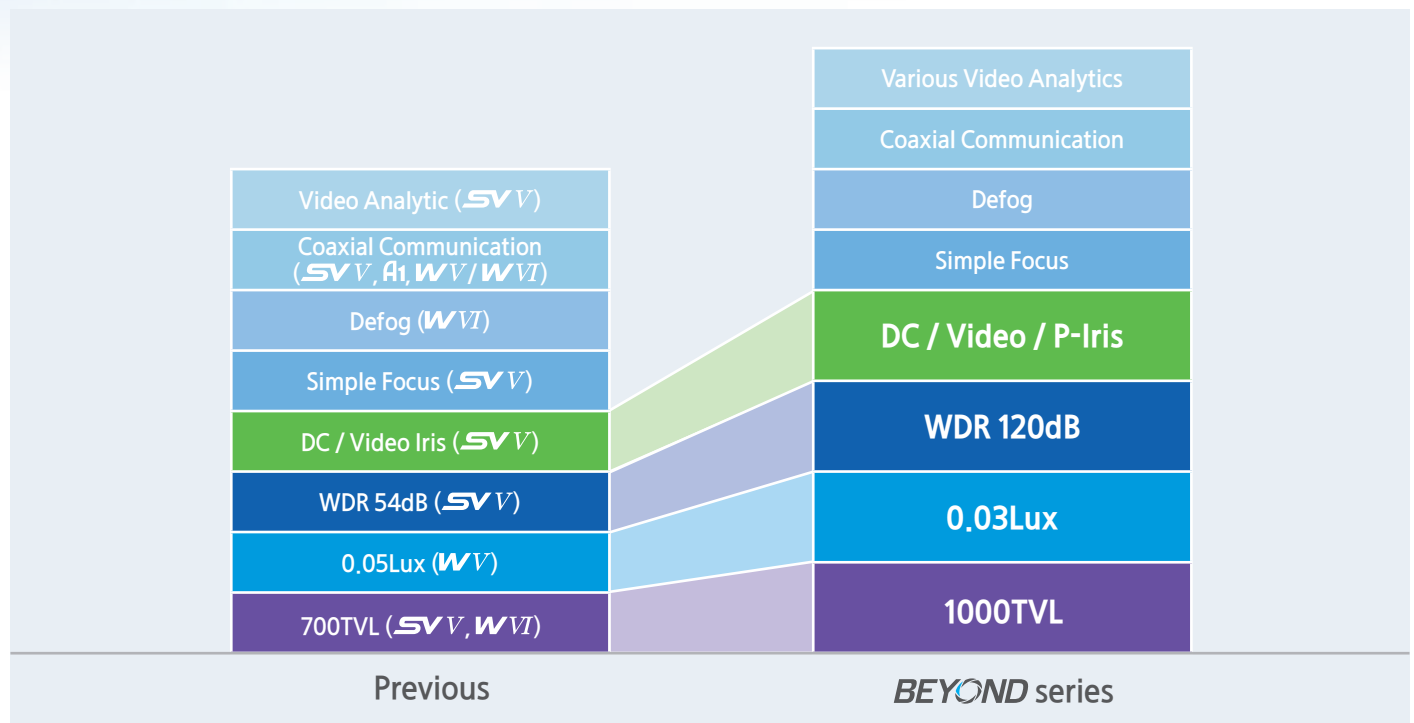
**BEYOND**  
**SRD-476D**

| Channel             |                         | 16CH  | 16CH  | 8CH   | 4CH   |
|---------------------|-------------------------|---|---|---|---|
| OS                  | Embedded                | Linux   | Linux   | Linux   | Linux   |
| Live                | Frame Rate (NTSC / PAL) | 480fps / 400fps   | 480fps / 400fps   | 240fps / 200fps   | 120fps / 100fps   |
| Recording           | Max. Record Rate / NTSC | 480fps@1280 x 480   | 120fps@1280 x 480   | 240fps@1280 x 480   | 120fps@1280 x 480<br>* P/B : 60fps@1280 x 480,<br>120fps@960 x 480  |
|                     | Max. Record Rate / PAL  | 400fps@1280 x 576   | 100fps@1280 x 576   | 200fps@1280 x 576   | 100fps@1280 x 576<br>* P/B : 50fps@1280 x 576,<br>120fps@960 x 576  |
|                     | Compression             | H.264   | H.264   | H.264   | H.264   |
| Video               | Inputs                  | 16CH  | 16CH  | 8CH   | 4CH   |
|                     | Loop Outputs            | Yes   | Yes   | Yes   | Yes   |
| Audio               | Inputs                  | 16CH (Built-in 4CH)   | 16CH (Built-in 4CH)   | 8CH (Built-in 4CH)  | 4CH   |
| Storage             | Internal HDD            | Up to 4 SATA HDDs   | Up to 4 SATA HDDs   | Up to 4 SATA HDDs   | Up to 1 SATA HDD  |
|                     | External HDD            | Up to 2 expansion bays  | Up to 2 expansion bays  | Up to 2 expansion bays  | -   |
| Monitors            | VGA                     | Yes   | Yes   | Yes   | Yes   |
|                     | HDMI                    | Yes   | Yes   | Yes   | Yes   |
|                     | Main Composite          | -   | -   | -   | -   |
|                     | Spot Composite          | 2CH (Digital)   | 2CH (Digital)   | 2CH (Digital)   | 2CH (Digital 1CH / Analog 1CH)  |
| Connections         | USB                     | 2 ports   | 2 ports   | 2 ports   | 2 ports   |
|                     | e-SATA                  | 2 External SATA ports   | 2 External SATA ports   | 2 External SATA ports   | -   |
|                     | DVD Writer (Back up)    | Yes   | Yes   | Yes   | Yes   |
|                     | Mouse                   | Yes   | Yes   | Yes   | Yes   |
| Network             | Remote Users            | Search 3 / Live unicast 10 /<br>Live multicast 20   | Search 3 / Live unicast 10 /<br>Live multicast 20   | Search 3 / Live unicast 10 /<br>Live multicast 20   | Search 3 / Live unicast 10 /<br>Live multicast 20   |
|                     | Transmission            | 4CIF, 2CIF, CIF   | 4CIF, 2CIF, CIF   | 4CIF, 2CIF, CIF   | 4CIF, 2CIF, CIF   |
|                     | Monitoring              | SmartViewer,<br>Webviewer, SSM  | SmartViewer,<br>Webviewer, SSM  | SmartViewer,<br>Webviewer, SSM  | SmartViewer,<br>Webviewer, SSM  |
| Removable BNC Panel |                         | -   | -   | -   | -   |
| PTZ Control         | Coax Protocol           | Samsung CCVC, Pelco-C   | Samsung CCVC, Pelco-C   | Samsung CCVC, Pelco-C   | Samsung CCVC, Pelco-C   |
|                     | RS-485 Protocol         | Samsung-T/E, Pelco-D/P, Panasonic,<br>Phillips, AD, DIAMOND, ERNA,<br>KALATEL,<br>VCL TP, VICON, ELMO, GE | Samsung-T/E, Pelco-D/P, Panasonic,<br>Phillips, AD, DIAMOND, ERNA,<br>KALATEL,<br>VCL TP, VICON, ELMO, GE | Samsung-T/E, Pelco-D/P, Panasonic,<br>Phillips, AD, DIAMOND, ERNA,<br>KALATEL,<br>VCL TP, VICON, ELMO, GE | Samsung-T/E, Pelco-D/P, Panasonic,<br>Phillips, AD, DIAMOND, ERNA,<br>KALATEL,<br>VCL TP, VICON, ELMO, GE |

# BEYOND *series*

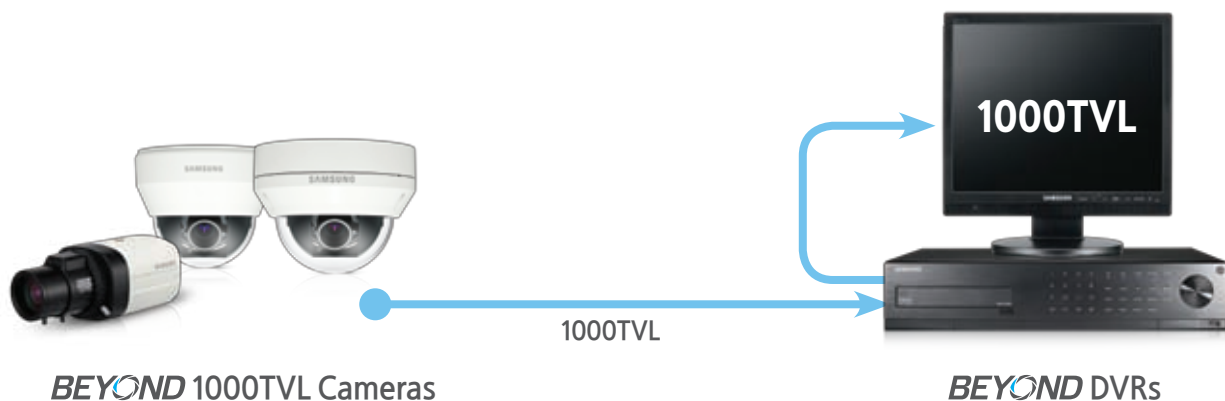
Beyond Your Expectation

**BEYOND** is new line-up analog products from Samsung that provides the exceptional image quality through the best resolution, outstanding backlight compensation and multitude of user friendly functions. **BEYOND** offers the best analog system solutions that goes beyond your expectation.



## Complete 1280H Solution

**BEYOND** series 1000TVL cameras used with our 1280H DVRs deliver a complete 1280H solution.



- 1000TVL resolution
- Superior low light and WDR compared to competitors
- Standard CCTV cameras (PAL/NTSC)

- 1280H real-time DVR
- Up to 480(NTSC)/400(PAL) fps recording rate (16CH DVRs)
- Enhanced Network Bandwidth up to 32Mbps

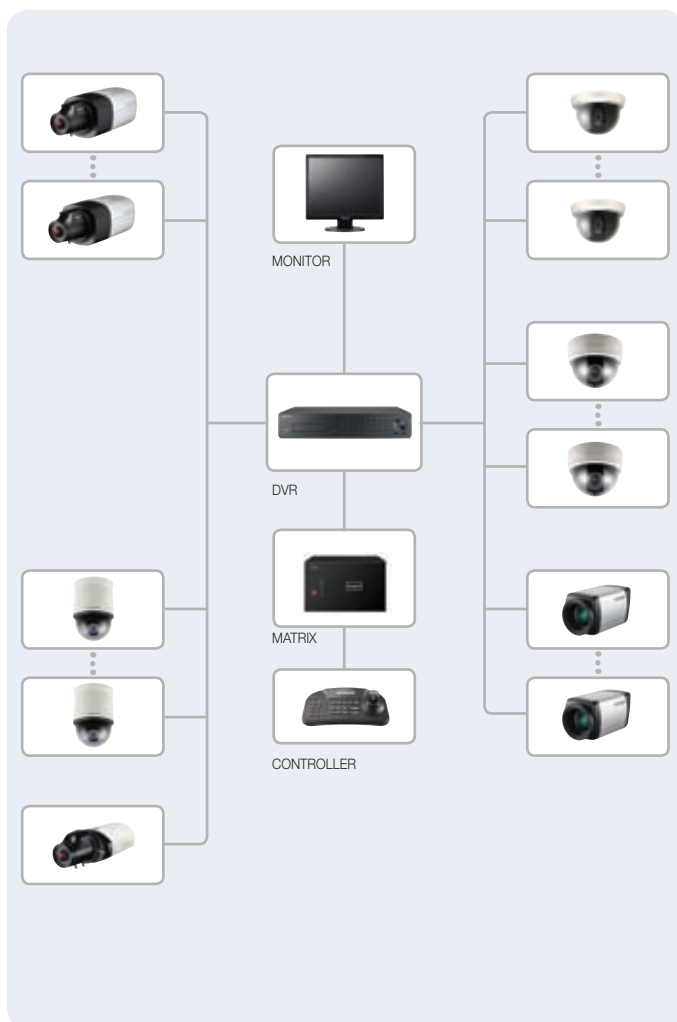
## Why BEYOND series?

Samsung is committed to lowering users' total cost of ownership. W7 chipset embedded in our **BEYOND** series cameras has enhanced features from the existing Analog system, maximizing image qualities (Resolution, Backlight, Low-light) and adding more features (Chromatic aberration, VA, 24 P-zones, Tampering, etc).

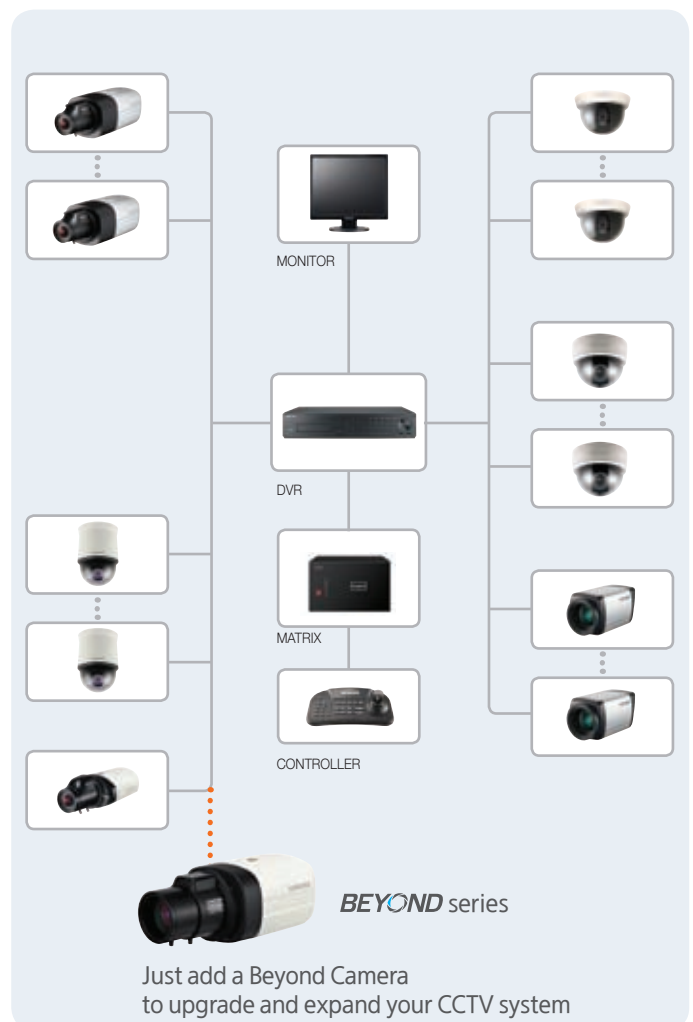
Different from HD CCTV systems that apply manufactures' own standards, **BEYOND** series cameras satisfy the standards of NTSC/PAL. This ensures that **BEYOND** series cameras are compatible with existing analog systems, infrastructure, and cabling without the need for replacement.

\***BEYOND** camera + DVR is recommended to achieve maximum performance of 1280H.

### Existing System



### Add **BEYOND** series





## 24h Clear View

There is no doubt the most important requirement of video surveillance cameras is the flexibility to create the best images 24/7 regardless of the weather conditions. The Beyond series adopts Samsung's new Winner7 DSP that promises to enhance your level of security by providing 1000TV lines resolution and technologies that will deliver you a return on your investment.



### Current Challenges...

"During the day, some areas of the scene are blurred and not clear."

"At night, scenes look noisy or too dark to see clearly."

"When your image comprises of indoor and outdoor scenes, one area is either too dark or too bright."

"When it is foggy the scene is obscured."

## 1000TV lines (1280H) High Resolution

Using advanced 1000TV lines (1280H) resolution gives the user % greater image quality to see much clearer images than 700TV lines (960H) cameras. With this powerful tool, users can identify detail in the picture where previously this was not possible.



Conventional Camera



1000TV lines (1280H)

## SSNR IV

By adopting SSNR IV Samsung's new generation of noise reduction technology, much improved on the successful SSNR III as it adopts a new method of motion blur reduction. Users can view clean images without image blur or ghosting when it really matters low light nighttime conditions.



SSNR Off



SSNR On



# 24h Clear View

## Defog

Defog function helps to improve the images during poor weather conditions such as fog and yellow-dust. The visibility of the cameras can be enhanced in any weather condition and users can get much improved clarity regardless of weather conditions when using Samsung's Defog function.



Defog Off



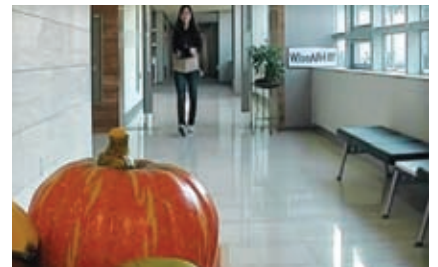
Defog On

## P-Iris

P-Iris optimizes the resolution at both the center and corner of the image, as well as the depth of field and shutter speed, provides increased image sharpness, especially when viewing long scenes such as corridors, station platforms or supermarket aisles.



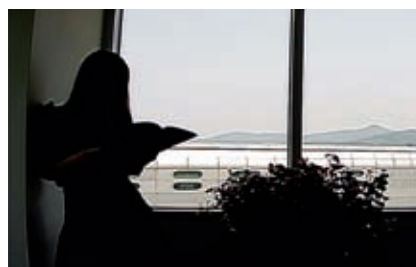
Conventional Camera



P-Iris

## WDR 120dB

The WDR function provides clear images even under extreme contrasting light conditions ; such as shop fronts or hotel receptions, where the light entering through the windows differs greatly from within, causing either over bright or over dark images when standard cameras are used, Samsung's Beyond series works with a contrast ratio of more than 120dB WDR, that accurately reproduces the detail of the images giving users the sharp clear images of the scene they need.



WDR Off



WDR On

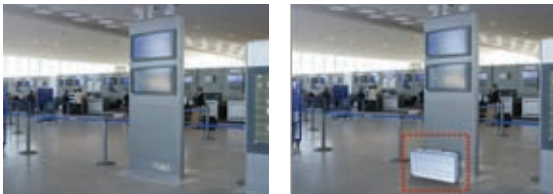
# Not only just Monitoring, Also User Convenience

As markets mature, the roles for video surveillance system expand beyond the role of just monitoring. Samsung have listened to the market and extended the functionalities of their cameras and DVRs by offering various video analytics as well as user oriented functions to help customers analyze their business and make their life easier. Samsung provides easiest GUI (Graphic User Interface) for those first-time users who are not familiar with systems. Additionally, customers can access the management system remotely via PC and on the go via Smartphones.

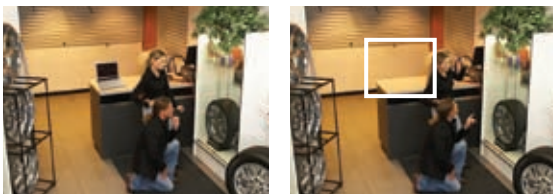
## Various Video Analytics

**Fixed/Moved** : The Fixed, senses when objects have appeared and remained in a scene for longer than a pre-determined period and the Moved, detects when objects are removed from a scene.

### Fixed (Appear, Left Behind)



### Moved (Disappear, Taken Away)



**Tampering** : When a camera's field of view is changed (camera moved or covered), the camera will detect and create an automatically alert.



**Fence** : Two modes can be set on the Fence function. Area mode provides a virtual electronic area, while the Line mode provides a virtual directional line on the scene that generates an alarm in the event of a breach of that area or a crossing of the directional line.



**Tracking** : Tracks an object through the scene and generates an alarm in the event of abnormal directional changes.

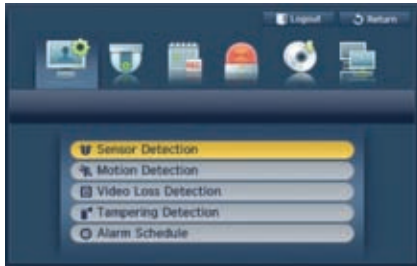


**Motion** : Any change occurring in predefined fields of view generates an alarm.

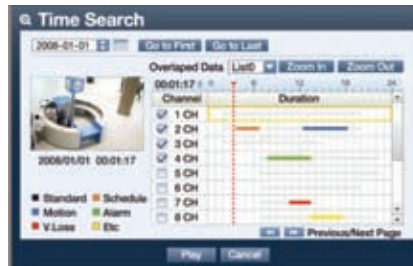


# Not only just Monitoring, Also User Convenience

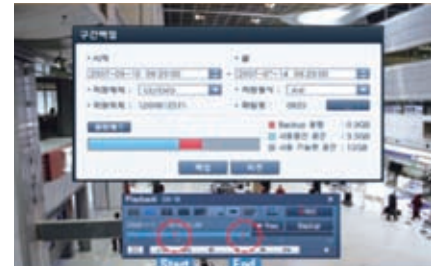
## Easy GUI



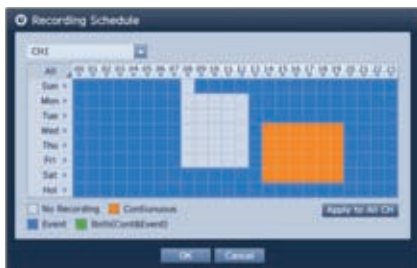
Easy User Interface



Easy Searching  
(Preview)



Easy Back up during  
Playback



Each Channel's Setting



Smart Searching



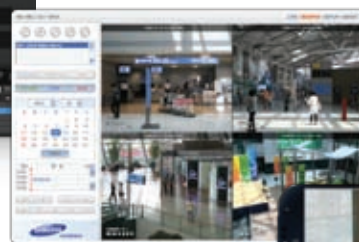
Privacy Masking

## Remote Monitoring

Beyond DVR range, the SRD-1676D series supports remote monitoring through a choice of software platforms ; SSM, SmartViewer, Web viewer as well as on-the-go with iPoLiS Mobile for Smartphones. User can monitor and control Live, Event, Alarm and Playback images from the DVRs through these platforms. The built-in web viewer offers enhanced compatibility, via Chrome, Explorer and Safari, while the Smartphone monitoring supports both iOS and Android.



SSM



Webviewer



Smart Phone

# BEYOND SCB-5005

1000TVL (1280H) WDR Camera



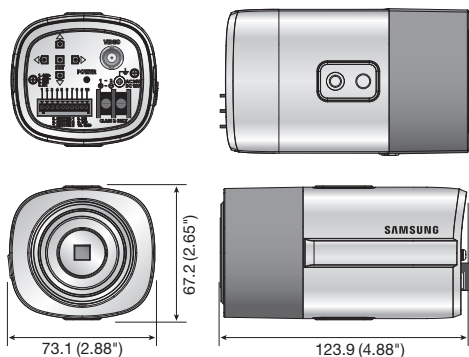
\* Lens not included

## Key Features

- High resolution of 1000TV lines (Color), 1000TV lines (B/W)
- 0.03Lux@F1.2, 50IRE (Color), 0.003Lux@F1.2 50IRE (B/W)  
0.01Lux@F1.2, 30IRE (Color), 0.001Lux@F1.2 30IRE (B/W)
- 120dB WDR, Day & Night (ICR), Simple focus, P-Iris
- SSDR, SSNRIV, Defog, Intelligent video analytics
- Coax : Pelco-C (Coaxitron), RS-485, Dual power

## Dimensions

Unit : mm (inch)



## Available Lenses / Accessories (Optional)



|                                  |  | SCB-5005N | SCB-5005P                |
|----------------------------------|--|-----------|--------------------------|
| VIDEO                            |  |           |                          |
| Imaging Device                   | 1/3" 1.3M CMOS   |           |                          |
| Total Pixels                     | 1,312(H) x 1,069(V)  |           |                          |
| Effective Pixels                 | 1,305(H) x 1,049(V)  |           |                          |
| Scanning System                  | Progressive scan   |           |                          |
| Synchronization                  | Internal   |           |                          |
| Frequency                        | H : 15.734KHz / V : 59.94Hz  |           | H : 15.625KHz / V : 50Hz |
| Horizontal Resolution            | Color : 1000TV lines, B/W : 1000TV lines   |           |                          |
| Min. Illumination                | Color : 0.03Lux (F1.2, 50IRE), 0.001Lux (1sec, F1.2, 50IRE),<br>0.01Lux (F1.2, 30IRE), 0.0003Lux (1sec, F1.2, 30IRE)<br>B/W : 0.003Lux (F1.2, 50IRE), 0.0001Lux (1sec, F1.2, 50IRE),<br>0.001Lux (F1.2, 30IRE), 0.00003Lux (1sec, F1.2, 30IRE) |           |                          |
| S / N Ratio                      | 52dB (AGC off, Weight on)  |           |                          |
| Video Output                     | CVBS : 1.0 Vpp / 75Ω composite   |           |                          |
| LENS                             |  |           |                          |
| Focus Control                    | Simple focus / Manual, Button control (Manual, Simple focus, Day & Night)  |           |                          |
| Lens Type                        | Manual / DC auto iris / P-Iris   |           |                          |
| Mount Type                       | C / CS   |           |                          |
| OPERATIONAL                      |  |           |                          |
| On Screen Display                | English, Chinese, Korean, Japanese, German, Italian, French, Spanish, Russian, Czech, Polish, Romanian, Serbian, Swedish, Danish, Turkish, Portuguese  |           |                          |
| Camera Title                     | Off / On (Displayed 15 characters)   |           |                          |
| Day & Night                      | Auto (ICR) / External / Color / B/W  |           |                          |
| Backlight Compensation           | Off / User BLC / HLC / WDR   |           |                          |
| Wide Dynamic Range               | 120dB  |           |                          |
| Contrast Enhancement             | SSDR (Off / On)  |           |                          |
| Digital Noise Reduction          | SSNRIV (Off / On)  |           |                          |
| Defog                            | Off / Auto / Manual  |           |                          |
| Purple Fringe Reduction          | Off / Low / Middle / High  |           |                          |
| Digital Image Stabilization      | Off / On   |           |                          |
| Tampering                        | Off / On   |           |                          |
| Motion Detection                 | Off / On   |           |                          |
| Intelligent Video Analytics      | Fence, (Dis)Appear, Counting (Off / On)  |           |                          |
| Privacy Masking                  | Off / On (24 programmable zones with 4 points polygonal masking)   |           |                          |
| Gain Control                     | Off / Low / Middle / High  |           |                          |
| White Balance                    | ATW / Outdoor / Indoor / Manual / AWC / Mercury (1,800K° ~ 10,500K°)   |           |                          |
| Electronic Shutter Speed         | 1sec ~ 1/12,000sec   |           |                          |
| Digital Zoom                     | Off / On (1x ~ 16x)  |           |                          |
| Reverse                          | Off / H-Rev / V-Rev / HV-Rev   |           |                          |
| Profile                          | Basic, Day & Night, Backlight, ITS, Indoor, User   |           |                          |
| Alarm                            | 1 Out  |           |                          |
| Communication                    | Coaxial control (SPC-300 compatible), RS-485   |           |                          |
| Protocol                         | Coax : Pelco-C (Coaxitron)<br>RS-485 : Samsung-T/E, Pelco-D/P, Panasonic, Bosch, Honeywell, Vicon, AD, GE  |           |                          |
| ENVIRONMENTAL                    |  |           |                          |
| Operating Temperature / Humidity | -10°C ~ +55°C (+14°F ~ +131°F) / Less than 90% RH  |           |                          |
| ELECTRICAL                       |  |           |                          |
| Input Voltage / Current          | Dual (24V AC & 12V DC ±10%)  |           |                          |
| Power Consumption                | Max. 6W  |           |                          |
| MECHANICAL                       |  |           |                          |
| Color / Material                 | Black, Silver / Aluminum, Plastic  |           |                          |
| Dimensions (WxHxD)               | 73.1 x 67.2 x 123.9mm (2.88" x 2.65" x 4.88")  |           |                          |
| Weight                           | 300g (0.66 lb)   |           |                          |

\* The latest product information / specification can be found at [www.samsungsecurity.com](http://www.samsungsecurity.com)



# BEYOND SCB-5003

1000TVL (1280H) WDR Camera



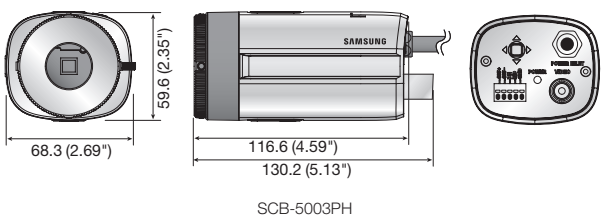
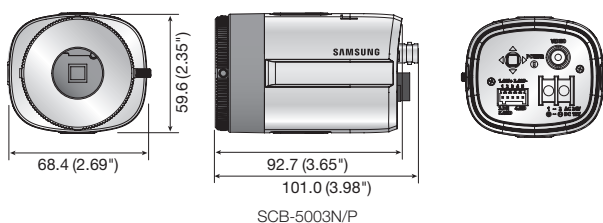
\* Lens not included

## Key Features

- High resolution of 1000TV lines (Color), 1000TV lines (B/W)
- 0.03Lux@F1.2, 50IRE (Color), 0.003Lux@F1.2 50IRE (B/W)  
0.01Lux@F1.2, 30IRE (Color), 0.001Lux@F1.2 30IRE (B/W)
- 120dB WDR, Day & Night (ICR)
- SDDR, SSNRIV, Defog, Intelligent video analytics
- Coax : Pelco-C (Coaxitron), RS-485
- Dual power, 230V AC (High voltage type)

## Dimensions

Unit : mm (inch)



## Available Lenses / Accessories (Optional)



|                                  | SCB-5003N  | SCB-5003P | SCB-5003PH                                       |
|----------------------------------|--|-----------|--|
| VIDEO                            |  |           |  |
| Imaging Device                   | 1/3" 1.3M CMOS   |           |  |
| Total Pixels                     | 1,312(H) x 1,069(V)  |           |  |
| Effective Pixels                 | 1,305(H) x 1,049(V)  |           |  |
| Scanning System                  | Progressive scan   |           |  |
| Synchronization                  | Internal   |           |  |
| Frequency                        | H : 15.734KHz / V : 59.94Hz    H : 15.625KHz / V : 50Hz  |           |  |
| Horizontal Resolution            | Color : 1000TV lines, B/W : 1000TV lines   |           |  |
| Min. Illumination                | Color : 0.03Lux (F1.2, 50IRE), 0.001Lux (1sec, F1.2, 50IRE),<br>0.01Lux (F1.2, 30IRE), 0.0003Lux (1sec, F1.2, 30IRE)<br>B/W : 0.003Lux (F1.2, 50IRE), 0.0001Lux (1sec, F1.2, 50IRE),<br>0.001Lux (F1.2, 30IRE), 0.00003Lux (1sec, F1.2, 30IRE) |           |  |
| S / N Ratio                      | 52dB (AGC off, Weight on)  |           |  |
| Video Output                     | CVBS : 1.0 Vpp / 75Ω composite   |           |  |
| LENS                             |  |           |  |
| Focus Control                    | Manual   |           |  |
| Lens Type                        | Manual / DC auto iris / Video iris   |           |  |
| Mount Type                       | C / CS   |           |  |
| OPERATIONAL                      |  |           |  |
| On Screen Display                | English, Chinese, Korean, Japanese, German, Italian, French, Spanish, Russian, Czech, Polish, Romanian, Serbian, Swedish, Danish, Turkish, Portuguese  |           |  |
| Camera Title                     | Off / On (Displayed 15 characters)   |           |  |
| Day & Night                      | Auto (ICR) / External / Color / B/W  |           |  |
| Backlight Compensation           | Off / User BLC / HLC / WDR   |           |  |
| Wide Dynamic Range               | 120dB  |           |  |
| Contrast Enhancement             | SSDR (Off / On)  |           |  |
| Digital Noise Reduction          | SSNRIV (Off / On)  |           |  |
| Defog                            | Off / Auto / Manual  |           |  |
| Purple Fringe Reduction          | Off / Low / Middle / High  |           |  |
| Digital Image Stabilization      | Off / On   |           |  |
| Tampering                        | Off / On   |           |  |
| Motion Detection                 | Off / On   |           |  |
| Intelligent Video Analytics      | Fence, (Dis)Appear, Counting (Off / On)  |           |  |
| Privacy Masking                  | Off / On (24 programmable zones with 4 points polygonal masking)   |           |  |
| Gain Control                     | Off / Low / Middle / High  |           |  |
| White Balance                    | ATW / Outdoor / Indoor / Manual / AWC / Mercury (1,800K° ~ 10,500K°)   |           |  |
| Electronic Shutter Speed         | 1sec ~ 1/12,000sec   |           |  |
| Digital Zoom                     | Off / On (1x ~ 16x)  |           |  |
| Reverse                          | Off / H-Rev / V-Rev / HV-Rev   |           |  |
| Profile                          | Basic, Day & Night, Backlight, ITS, Indoor, User   |           |  |
| Alarm                            | 1 Out  |           |  |
| Communication                    | Coaxial control (SPC-300 compatible), RS-485   |           |  |
| Protocol                         | Coax : Pelco-C (Coaxitron)<br>RS-485 : Samsung-T/E, Pelco-D/P, Panasonic, Bosch, Honeywell, Vicon, AD, GE  |           |  |
| ENVIRONMENTAL                    |  |           |  |
| Operating Temperature / Humidity | -10°C ~ +55°C (+14°F ~ +131°F) / Less than 90% RH  |           |  |
| ELECTRICAL                       |  |           |  |
| Input Voltage / Current          | Dual (24V AC & 12V DC ±10%)  |           | 230V AC ±10%                                     |
| Power Consumption                | Max. 6W  |           |  |
| MECHANICAL                       |  |           |  |
| Color / Material                 | Black, Ivory / Aluminum, Plastic   |           |  |
| Dimensions (WxHxD)               | 68.4 x 59.6 x 92.7mm<br>(2.69" x 2.35" x 3.65")  |           | 68.3 x 59.6 x 116.6mm<br>(2.69" x 2.35" x 4.59") |
| Weight                           | 210g (0.46 lb)   |           | 411g (0.91 lb)                                   |

\* The latest product information / specification can be found at [www.samsungsecurity.com](http://www.samsungsecurity.com)

# BEYOND SCB-5000

1000TVL (1280H) Camera



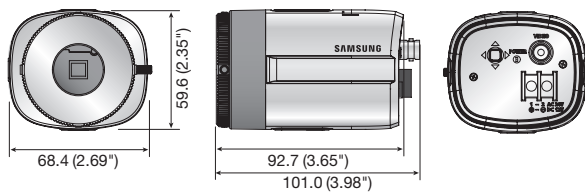
\* Lens not included

## Key Features

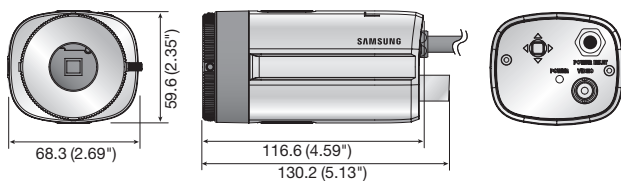
- High resolution of 1000TV lines (Color), 1000TV lines (B/W)
- Min. illumination 0.03Lux@F1.2, 50IRE, 0.01Lux@F1.2, 30IRE
- SSDR, SSNRIV, Defog
- Coax : Pelco-C (Coaxitron)
- Dual power, 12V DC, 230V AC (High voltage type)

## Dimensions

Unit : mm (inch)



SCB-5000N/ND/P/PD



SCB-5000PH

|                                  | SCB-5000N   | SCB-5000ND     | SCB-5000P                   | SCB-5000PD     | SCB-5000PH                                       |
|----------------------------------|---|----------------|-----------------------------|----------------|--|
| VIDEO                            |   |                |                             |                |  |
| Imaging Device                   | 1/3" 1.3M CMOS  |                |                             |                |  |
| Total Pixels                     | 1,312(H) x 1,069(V)   |                |                             |                |  |
| Effective Pixels                 | 1,305(H) x 1,049(V)   |                |                             |                |  |
| Scanning System                  | Progressive scan  |                |                             |                |  |
| Synchronization                  | Internal  |                |                             |                |  |
| Frequency                        | H : 15.734KHz / V : 59.94Hz   |                | H : 15.625KHz / V : 50Hz    |                |  |
| Horizontal Resolution            | Color : 1000TV lines, B/W : 1000TV lines  |                |                             |                |  |
| Min. Illumination                | 0.03Lux (F1.2, 50IRE), 0.001Lux (1sec, F1.2, 50IRE)<br>0.01Lux (F1.2, 30IRE), 0.0003Lux (1sec, F1.2, 30IRE)   |                |                             |                |  |
| S / N Ratio                      | 52dB (AGC off, Weight on)   |                |                             |                |  |
| Video Output                     | CVBS : 1.0 Vpp / 75Ω composite  |                |                             |                |  |
| LENS                             |   |                |                             |                |  |
| Focus Control                    | Manual  |                |                             |                |  |
| Lens Type                        | Manual / DC auto iris   |                |                             |                |  |
| Mount Type                       | C / CS  |                |                             |                |  |
| OPERATIONAL                      |   |                |                             |                |  |
| On Screen Display                | English, Chinese, Korean, Japanese, German, Italian, French, Spanish, Russian, Czech, Polish, Romanian, Serbian, Swedish, Danish, Turkish, Portuguese |                |                             |                |  |
| Camera Title                     | Off / On (Displayed 15 characters)  |                |                             |                |  |
| Day & Night                      | Auto (Electrical) / Color / B/W   |                |                             |                |  |
| Backlight Compensation           | Off / User BLC / HLC  |                |                             |                |  |
| Contrast Enhancement             | SSDR (Off / On)   |                |                             |                |  |
| Digital Noise Reduction          | SSNRIV (Off / On)   |                |                             |                |  |
| Defog                            | Off / Auto / Manual   |                |                             |                |  |
| Purple Fringe Reduction          | Off / Low / Middle / High   |                |                             |                |  |
| Digital Image Stabilization      | Off / On  |                |                             |                |  |
| Tampering                        | Off / On  |                |                             |                |  |
| Motion Detection                 | Off / On  |                |                             |                |  |
| Privacy Masking                  | Off / On (24 programmable zones with 4 points polygonal masking)  |                |                             |                |  |
| Gain Control                     | Off / Low / Middle / High   |                |                             |                |  |
| White Balance                    | ATW / Outdoor / Indoor / Manual / AWC / Mercury (1,800K° ~ 10,500K°)  |                |                             |                |  |
| Electronic Shutter Speed         | 1sec ~ 1/12,000sec  |                |                             |                |  |
| Digital Zoom                     | Off / On (1x ~ 16x)   |                |                             |                |  |
| Reverse                          | Off / H-Rev / V-Rev / HV-Rev  |                |                             |                |  |
| Profile                          | Basic, Day & Night, Backlight, ITS, Indoor, User  |                |                             |                |  |
| Communication                    | Coaxial control (SPC-300 compatible)  |                |                             |                |  |
| Protocol                         | Coax : Pelco-C (Coaxitron)  |                |                             |                |  |
| ENVIRONMENTAL                    |   |                |                             |                |  |
| Operating Temperature / Humidity | -10°C ~ +55°C (+14°F ~ +131°F) / Less than 90% RH   |                |                             |                |  |
| ELECTRICAL                       |   |                |                             |                |  |
| Input Voltage / Current          | Dual (24V AC & 12V DC ±10%)   | 12V DC         | Dual (24V AC & 12V DC ±10%) | 12V DC         | 230V AC ±10%                                     |
| Power Consumption                | Max. 3.7W   | Max. 2.7W      | Max. 3.7W                   | Max. 2.7W      | Max. 4.6W  |
| MECHANICAL                       |   |                |                             |                |  |
| Color / Material                 | Black, Ivory / Aluminum, Plastic  |                |                             |                |  |
| Dimensions (WxHxD)               | 68.4 x 59.6 x 92.7mm<br>(2.69" x 2.35" x 3.65")   |                |                             |                | 68.3 x 59.6 x 116.6mm<br>(2.69" x 2.35" x 4.59") |
| Weight                           | 200g (0.44 lb)  | 175g (0.39 lb) | 200g (0.44 lb)              | 200g (0.39 lb) | 396g (0.87 lb)                                   |

## Available Lenses / Accessories (Optional)



\* The latest product information / specification can be found at [www.samsungsecurity.com](http://www.samsungsecurity.com)

# BEYOND SCO-5083R

1000TVL (1280H) IR Bullet Camera

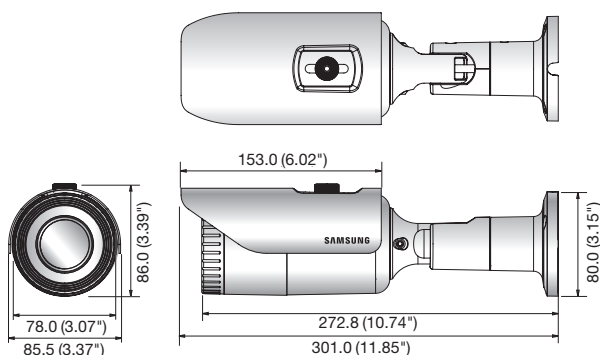


## Key Features

- High resolution of 1000TV lines (Color), 1000TV lines (B/W)
- Min. Illumination 0Lux (IR LED on), IR distance 50m
- 3.3x varifocal lens (3 ~ 10mm)
- 120dB WDR, Day & Night (ICR)
- SSSR, SSNRIV, Defog, Intelligent video analytics
- IP66, IK10, Coax : Pelco-C (Coaxitron), RS-485, Dual power

## Dimensions

Unit : mm (inch)



|                                  | SCO-5083RN  |  | SCO-5083RP               |
|----------------------------------|---|--|--------------------------|
| VIDEO                            |   |  |                          |
| Imaging Device                   | 1/3" 1.3M CMOS  |  |                          |
| Total Pixels                     | 1,312(H) x 1,069(V)   |  |                          |
| Effective Pixels                 | 1,305(H) x 1,049(V)   |  |                          |
| Scanning System                  | Progressive scan  |  |                          |
| Synchronization                  | Internal  |  |                          |
| Frequency                        | H : 15.734KHz / V : 59.94Hz   |  | H : 15.625KHz / V : 50Hz |
| Horizontal Resolution            | Color : 1000TV lines, B/W : 1000TV lines  |  |                          |
| Min. Illumination                | Color : 0.05Lux (F1.4, 50IRE), 0.001Lux (1sec, F1.4, 50IRE),<br>0.02Lux (F1.4, 30IRE), 0.0006Lux (1sec, F1.4, 30IRE)<br>B/W : 0Lux (IR LED on)        |  |                          |
| S / N Ratio                      | 52dB (AGC off, Weight on)   |  |                          |
| Video Output                     | CVBS : 1.0 Vpp / 75Ω composite  |  |                          |
| LENS                             |   |  |                          |
| Focal Length (Zoom Ratio)        | 3 ~ 10mm (3.3x) varifocal   |  |                          |
| Max. Aperture Ratio              | F1.4  |  |                          |
| Angular Field of View            | H : 82.0°(Wide) ~ 26.5°(Tele) / V : 59.7°(Wide) ~ 19.9°(Tele)   |  |                          |
| Min. Object Distance             | 0.5m (1.64ft)   |  |                          |
| Focus Control                    | Manual  |  |                          |
| Lens Type                        | DC auto iris  |  |                          |
| Mount Type                       | Board type  |  |                          |
| OPERATIONAL                      |   |  |                          |
| On Screen Display                | English, Chinese, Korean, Japanese, German, Italian, French, Spanish, Russian, Czech, Polish, Romanian, Serbian, Swedish, Danish, Turkish, Portuguese |  |                          |
| Camera Title                     | Off / On (Displayed 15 characters)  |  |                          |
| Day & Night                      | Auto (ICR) / External / Color / B/W   |  |                          |
| Anti IR Saturation               | Top / Bottom / Left / Right   |  |                          |
| Backlight Compensation           | Off / User BLC / HLC / WDR  |  |                          |
| Wide Dynamic Range               | 120dB   |  |                          |
| Contrast Enhancement             | SSDR (Off / On)   |  |                          |
| Digital Noise Reduction          | SSNR IV (Off / On)  |  |                          |
| Defog                            | Off / Auto / Manual   |  |                          |
| Purple Fringe Reduction          | Off / Low / Middle / High   |  |                          |
| Digital Image Stabilization      | Off / On  |  |                          |
| Tampering                        | Off / On  |  |                          |
| Motion Detection                 | Off / On  |  |                          |
| Intelligent Video Analytics      | Fence, (Dis)Appear, Counting (Off / On)   |  |                          |
| Privacy Masking                  | Off / On (24 programmable zones with 4 points polygonal masking)  |  |                          |
| Gain Control                     | Off / Low / Middle / High   |  |                          |
| White Balance                    | ATW / Outdoor / Indoor / Manual / AWC / Mercury (1,800K° ~ 10,500K°)  |  |                          |
| Electronic Shutter Speed         | 1sec ~ 1/12,000sec  |  |                          |
| Digital Zoom                     | Off / On (1x ~ 16x)   |  |                          |
| Reverse                          | Off / H-Rev / V-Rev / HV-Rev  |  |                          |
| Profile                          | Basic, Day & Night, Backlight, ITS, Indoor, User  |  |                          |
| Alarm                            | 1 Out   |  |                          |
| Communication                    | Coaxial control (SPC-300 compatible)  |  |                          |
| Protocol                         | Coax : Pelco-C (Coaxitron)<br>RS-485 : Samsung-T/E, Pelco-D/P, Panasonic, Bosch, Honeywell, Vicon, AD, GE   |  |                          |
| IR Distance                      | 50m (164.04ft) (IR LED 36ea)  |  |                          |
| ENVIRONMENTAL                    |   |  |                          |
| Operating Temperature / Humidity | -30°C ~ +55°C (-22°F ~ +131°F) / Less than 90% RH<br>*Start up should be done at above -10°C (+14°F)  |  |                          |
| Ingress Protection               | IP66  |  |                          |
| Vandal Resistance                | IK10  |  |                          |
| ELECTRICAL                       |   |  |                          |
| Input Voltage / Current          | Dual (24V AC & 12V DC ±10%)   |  |                          |
| Power Consumption                | Max. 9.5W   |  |                          |
| MECHANICAL                       |   |  |                          |
| Color / Material                 | Dark gray / ALDC  |  |                          |
| Dimensions (WxH)                 | Ø78.0 x 272.8mm (3.07" x 10.74") (Without sun shield)   |  |                          |
| Weight                           | 1.5Kg (3.31 lb)   |  |                          |

\* The latest product information / specification can be found at [www.samsungsecurity.com](http://www.samsungsecurity.com)



# BEYOND SCD-5083

1000TVL (1280H) WDR Varifocal Dome Camera

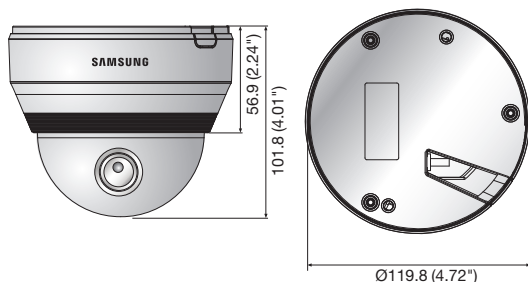


## Key Features

- High resolution of 1000TV lines (Color), 1000TV lines (B/W)
- 0.03Lux@F1.2, 50IRE (Color), 0.003Lux@F1.2 50IRE (B/W)  
0.01Lux@F1.2, 30IRE (Color), 0.001Lux@F1.2 30IRE (B/W)
- 3.8x varifocal lens (2.8 ~ 10.5mm)
- 120dB WDR, Day & Night (ICR)
- SDDR, SSNRIV, Defog, Intelligent video analytics
- Coax : Pelco-C (Coaxitron), Dual power

## Dimensions

Unit : mm (inch)



## Accessories (Optional)



SBP-301HM4 SBP-300LM SBP-300CM SBP-300WM1 SBP-300WM SBP-300B SBP-300PM SBP-300KM

|                                  |  | SCD-5083N | SCD-5083P                |
|----------------------------------|--|-----------|--------------------------|
| VIDEO                            |  |           |                          |
| Imaging Device                   | 1/3" 1.3M CMOS   |           |                          |
| Total Pixels                     | 1,312(H) x 1,069(V)  |           |                          |
| Effective Pixels                 | 1,305(H) x 1,049(V)  |           |                          |
| Scanning System                  | Progressive scan   |           |                          |
| Synchronization                  | Internal   |           |                          |
| Frequency                        | H : 15.734KHz / V : 59.94Hz  |           | H : 15.625KHz / V : 50Hz |
| Horizontal Resolution            | Color : 1000TV lines, B/W : 1000TV lines   |           |                          |
| Min. Illumination                | Color : 0.03Lux (F1.2, 50IRE), 0.001Lux (1sec, F1.2, 50IRE),<br>0.01Lux (F1.2, 30IRE), 0.0003Lux (1sec, F1.2, 30IRE)<br>B/W : 0.003Lux (F1.2, 50IRE), 0.0001Lux (1sec, F1.2, 50IRE),<br>0.001Lux (F1.2, 30IRE), 0.00003Lux (1sec, F1.2, 30IRE) |           |                          |
| S / N Ratio                      | 52dB (AGC off, Weight on)  |           |                          |
| Video Output                     | CVBS : 1.0 Vpp / 75Ω composite   |           |                          |
| LENS                             |  |           |                          |
| Focal Length (Zoom Ratio)        | 2.8 ~ 10.5mm (3.8x) varifocal  |           |                          |
| Max. Aperture Ratio              | F1.2   |           |                          |
| Angular Field of View            | H : 91.5°(Wide) ~ 27.7°(Tele) / V : 68.3°(Wide) ~ 20.8°(Tele)  |           |                          |
| Min. Object Distance             | 0.5m (1.64ft)  |           |                          |
| Focus Control                    | Manual   |           |                          |
| Lens Type                        | DC auto iris   |           |                          |
| Mount Type                       | Board type   |           |                          |
| OPERATIONAL                      |  |           |                          |
| On Screen Display                | English, Chinese, Korean, Japanese, German, Italian, French, Spanish, Russian, Czech, Polish, Romanian, Serbian, Swedish, Danish, Turkish, Portuguese  |           |                          |
| Camera Title                     | Off / On (Displayed 15 characters)   |           |                          |
| Day & Night                      | Auto (ICR) / External / Color / B/W  |           |                          |
| Backlight Compensation           | Off / User BLC / HLC / WDR   |           |                          |
| Wide Dynamic Range               | 120dB  |           |                          |
| Contrast Enhancement             | SSDR (Off / On)  |           |                          |
| Digital Noise Reduction          | SSNR IV (Off / On)   |           |                          |
| Defog                            | Off / Auto / Manual  |           |                          |
| Purple Fringe Reduction          | Off / Low / Middle / High  |           |                          |
| Digital Image Stabilization      | Off / On   |           |                          |
| Tampering                        | Off / On   |           |                          |
| Motion Detection                 | Off / On   |           |                          |
| Intelligent Video Analytics      | Fence, (Dis)Appear, Counting (Off / On)  |           |                          |
| Privacy Masking                  | Off / On (24 programmable zones with 4 points polygonal masking)   |           |                          |
| Gain Control                     | Off / Low / Middle / High  |           |                          |
| White Balance                    | ATW / Outdoor / Indoor / Manual / AWC / Mercury (1,800K° ~ 10,500K°)   |           |                          |
| Electronic Shutter Speed         | 1sec ~ 1/12,000sec   |           |                          |
| Digital Zoom                     | Off / On (1x ~ 16x)  |           |                          |
| Reverse                          | Off / H-Rev / V-Rev / HV-Rev   |           |                          |
| Profile                          | Basic, Day & Night, Backlight, ITS, Indoor, User   |           |                          |
| Alarm                            | 1 Out  |           |                          |
| Communication                    | Coaxial control (SPC-300 compatible)   |           |                          |
| Protocol                         | Coax : Pelco-C (Coaxitron)   |           |                          |
| ENVIRONMENTAL                    |  |           |                          |
| Operating Temperature / Humidity | -10°C ~ +55°C (+14°F ~ +131°F) / Less than 90% RH  |           |                          |
| ELECTRICAL                       |  |           |                          |
| Input Voltage / Current          | Dual (24V AC & 12V DC ±10%)  |           |                          |
| Power Consumption                | Max. 5.6W  |           |                          |
| MECHANICAL                       |  |           |                          |
| Color / Material                 | Ivory / Aluminum, Plastic  |           |                          |
| Dimensions (WxH)                 | Ø119.8 x 101.8mm (Ø4.72" x 4.01")  |           |                          |
| Weight                           | 535g (1.18 lb)   |           |                          |

\* The latest product information / specification can be found at [www.samsungsecurity.com](http://www.samsungsecurity.com)

# BEYOND SCD-5082

1000TVL (1280H) Varifocal Dome Camera

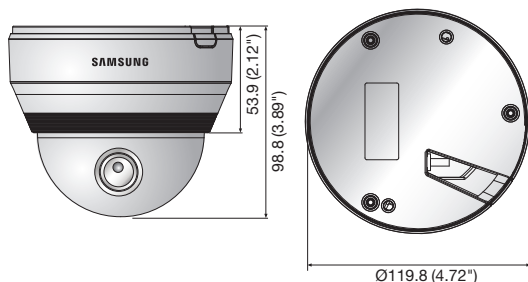


## Key Features

- High resolution of 1000TV lines (Color), 1000TV lines (B/W)
- 0.05Lux@F1.4, 50IRE (Color), 0.005Lux@F1.4 50IRE (B/W)  
0.02Lux@F1.4, 30IRE (Color), 0.002Lux@F1.4 30IRE (B/W)
- 3.3x varifocal lens (3 ~ 10mm)
- Day & Night (ICR), SSDR, SSNRIV, Defog
- Coax : Pelco-C (Coaxitron), Dual power

## Dimensions

Unit : mm (inch)



## Accessories (Optional)



SBP-301HM4 SBP-300LM SBP-300CM SBP-300WM1 SBP-300WM SBP-300B SBP-300PM SBP-300KM

|                                  |  | SCD-5082N | SCD-5082P                |
|----------------------------------|--|-----------|--------------------------|
| VIDEO                            |  |           |                          |
| Imaging Device                   | 1/3" 1.3M CMOS   |           |                          |
| Total Pixels                     | 1,312(H) x 1,069(V)  |           |                          |
| Effective Pixels                 | 1,305(H) x 1,049(V)  |           |                          |
| Scanning System                  | Progressive scan   |           |                          |
| Synchronization                  | Internal   |           |                          |
| Frequency                        | H : 15.734KHz / V : 59.94Hz  |           | H : 15.625KHz / V : 50Hz |
| Horizontal Resolution            | Color : 1000TV lines, B/W : 1000TV lines   |           |                          |
| Min. Illumination                | Color : 0.05Lux (F1.4, 50IRE), 0.001Lux (1sec, F1.4, 50IRE),<br>0.02Lux (F1.4, 30IRE), 0.0006Lux (1sec, F1.4, 30IRE)<br>B/W : 0.005Lux (F1.4, 50IRE), 0.0001Lux (1sec, F1.4, 50IRE),<br>0.002Lux (F1.4, 30IRE), 0.00006Lux (1sec, F1.4, 30IRE) |           |                          |
| S / N Ratio                      | 52dB (AGC off, Weight on)  |           |                          |
| Video Output                     | CVBS : 1.0 Vpp / 75Ω composite   |           |                          |
| LENS                             |  |           |                          |
| Focal Length (Zoom Ratio)        | 3 ~ 10mm (3.3x) varifocal  |           |                          |
| Max. Aperture Ratio              | F1.4   |           |                          |
| Angular Field of View            | H : 82.0°(Wide) ~ 26.5°(Tele) / V : 59.7°(Wide) ~ 19.9°(Tele)  |           |                          |
| Min. Object Distance             | 0.5m (1.64ft)  |           |                          |
| Focus Control                    | Manual   |           |                          |
| Lens Type                        | DC auto iris   |           |                          |
| Mount Type                       | Board type   |           |                          |
| OPERATIONAL                      |  |           |                          |
| On Screen Display                | English, Chinese, Korean, Japanese, German, Italian, French, Spanish, Russian, Czech, Polish, Romanian, Serbian, Swedish, Danish, Turkish, Portuguese  |           |                          |
| Camera Title                     | Off / On (Displayed 15 characters)   |           |                          |
| Day & Night                      | Auto (ICR) / Color / B/W   |           |                          |
| Backlight Compensation           | Off / User BLC / HLC   |           |                          |
| Contrast Enhancement             | SSDR (Off / On)  |           |                          |
| Digital Noise Reduction          | SSNR IV (Off / On)   |           |                          |
| Defog                            | Off / Auto / Manual  |           |                          |
| Purple Fringe Reduction          | Off / Low / Middle / High  |           |                          |
| Digital Image Stabilization      | Off / On   |           |                          |
| Tampering                        | Off / On   |           |                          |
| Motion Detection                 | Off / On   |           |                          |
| Privacy Masking                  | Off / On (24 programmable zones with 4 points polygonal masking)   |           |                          |
| Gain Control                     | Off / Low / Middle / High  |           |                          |
| White Balance                    | ATW / Outdoor / Indoor / Manual / AWC / Mercury (1,800K° ~ 10,500K°)   |           |                          |
| Electronic Shutter Speed         | 1sec ~ 1/12,000sec   |           |                          |
| Digital Zoom                     | Off / On (1x ~ 16x)  |           |                          |
| Reverse                          | Off / H-Rev / V-Rev / HV-Rev   |           |                          |
| Profile                          | Basic, Day & Night, Backlight, ITS, Indoor, User   |           |                          |
| Communication                    | Coaxial control (SPC-300 compatible)   |           |                          |
| Protocol                         | Coax : Pelco-C (Coaxitron)   |           |                          |
| ENVIRONMENTAL                    |  |           |                          |
| Operating Temperature / Humidity | -10°C ~ +55°C (+14°F ~ +131°F) / Less than 90% RH  |           |                          |
| ELECTRICAL                       |  |           |                          |
| Input Voltage / Current          | Dual (24V AC & 12V DC ±10%)  |           |                          |
| Power Consumption                | Max. 5.6W  |           |                          |
| MECHANICAL                       |  |           |                          |
| Color / Material                 | Ivory / Aluminum, Plastic  |           |                          |
| Dimensions (WxH)                 | Ø119.8 x 98.8mm (Ø4.72" x 3.89")   |           |                          |
| Weight                           | 420g (0.93 lb)   |           |                          |

\* The latest product information / specification can be found at [www.samsungsecurity.com](http://www.samsungsecurity.com)

# BEYOND SCD-5080

1000TVL (1280H) Varifocal Dome Camera

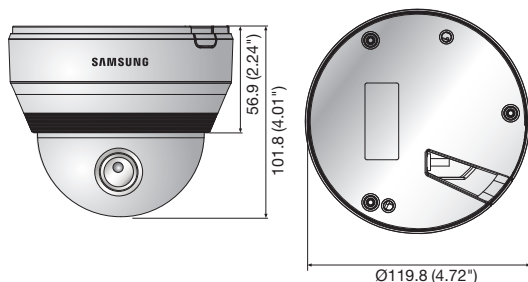


## Key Features

- High resolution of 1000TV lines (Color), 1000TV lines (B/W)
- Min. illumination 0.05Lux@F1.4, 50IRE, 0.02Lux@F1.4, 30IRE
- 3.3x varifocal lens (3 ~ 10mm)
- SSDR, SSNRIV, Defog
- Coax : Pelco-C (Coaxitron), Dual power

## Dimensions

Unit : mm (inch)



## Accessories (Optional)



SBP-301HM4 SBP-300LM SBP-300CM SBP-300WM1 SBP-300WM SBP-300B SBP-300PM SBP-300KM

|                                  | SCD-5080N   |  | SCD-5080P                |
|----------------------------------|---|--|--------------------------|
| VIDEO                            |   |  |                          |
| Imaging Device                   | 1/3" 1.3M CMOS  |  |                          |
| Total Pixels                     | 1,312(H) x 1,069(V)   |  |                          |
| Effective Pixels                 | 1,305(H) x 1,049(V)   |  |                          |
| Scanning System                  | Progressive scan  |  |                          |
| Synchronization                  | Internal  |  |                          |
| Frequency                        | H : 15.734KHz / V : 59.94Hz   |  | H : 15.625KHz / V : 50Hz |
| Horizontal Resolution            | Color : 1000TV lines, B/W : 1000TV lines  |  |                          |
| Min. Illumination                | 0.05Lux (F1.4, 50IRE), 0.001Lux (1sec, F1.4, 50IRE)<br>0.02Lux (F1.4, 30IRE), 0.0006Lux (1sec, F1.4, 30IRE)   |  |                          |
| S / N Ratio                      | 52dB (AGC off, Weight on)   |  |                          |
| Video Output                     | CVBS : 1.0 Vpp / 75Ω composite  |  |                          |
| LENS                             |   |  |                          |
| Focal Length (Zoom Ratio)        | 3 ~ 10mm (3.3x) varifocal   |  |                          |
| Max. Aperture Ratio              | F1.4  |  |                          |
| Angular Field of View            | H : 82.0°(Wide) ~ 26.5°(Tele) / V : 59.7°(Wide) ~ 19.9°(Tele)   |  |                          |
| Min. Object Distance             | 0.5m (1.64ft)   |  |                          |
| Focus Control                    | Manual  |  |                          |
| Lens Type                        | DC auto iris  |  |                          |
| Mount Type                       | Board type  |  |                          |
| OPERATIONAL                      |   |  |                          |
| On Screen Display                | English, Chinese, Korean, Japanese, German, Italian, French, Spanish, Russian, Czech, Polish, Romanian, Serbian, Swedish, Danish, Turkish, Portuguese |  |                          |
| Camera Title                     | Off / On (Displayed 15 characters)  |  |                          |
| Day & Night                      | Auto (Electrical) / Color / B/W   |  |                          |
| Backlight Compensation           | Off / User BLC / HLC  |  |                          |
| Contrast Enhancement             | SSDR (Off / On)   |  |                          |
| Digital Noise Reduction          | SSNR IV (Off / On)  |  |                          |
| Defog                            | Off / Auto / Manual   |  |                          |
| Purple Fringe Reduction          | Off / Low / Middle / High   |  |                          |
| Digital Image Stabilization      | Off / On  |  |                          |
| Tampering                        | Off / On  |  |                          |
| Motion Detection                 | Off / On  |  |                          |
| Privacy Masking                  | Off / On (24 programmable zones with 4 points polygonal masking)  |  |                          |
| Gain Control                     | Off / Low / Middle / High   |  |                          |
| White Balance                    | ATW / Outdoor / Indoor / Manual / AWC / Mercury (1,800K° ~ 10,500K°)  |  |                          |
| Electronic Shutter Speed         | 1sec ~ 1/12,000sec  |  |                          |
| Digital Zoom                     | Off / On (1x ~ 16x)   |  |                          |
| Reverse                          | Off / H-Rev / V-Rev / HV-Rev  |  |                          |
| Profile                          | Basic, Day & Night, Backlight, ITS, Indoor, User  |  |                          |
| Communication                    | Coaxial control (SPC-300 compatible)  |  |                          |
| Protocol                         | Coax : Pelco-C (Coaxitron)  |  |                          |
| ENVIRONMENTAL                    |   |  |                          |
| Operating Temperature / Humidity | -10°C ~ +55°C (+14°F ~ +131°F) / Less than 90% RH   |  |                          |
| ELECTRICAL                       |   |  |                          |
| Input Voltage / Current          | Dual (24V AC & 12V DC ±10%)   |  |                          |
| Power Consumption                | Max. 3.5W   |  |                          |
| MECHANICAL                       |   |  |                          |
| Color / Material                 | Ivory / Aluminum, Plastic   |  |                          |
| Dimensions (WxH)                 | Ø119.8 x 101.8mm (Ø4.72" x 4.01")   |  |                          |
| Weight                           | 520g (1.15 lb)  |  |                          |

\* The latest product information / specification can be found at [www.samsungsecurity.com](http://www.samsungsecurity.com)

# BEYOND SCD-5030

1000TVL (1280H) Small Dome Camera

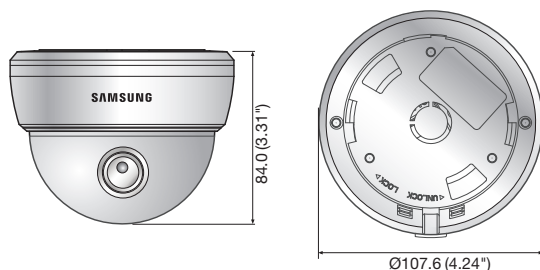


## Key Features

- High resolution of 1000TV lines (Color), 1000TV lines (B/W)
- Min. illumination 0.09Lux@F1.8, 50IRE, 0.05Lux@F1.8, 30IRE
- Built-in fixed lens (6mm)
- SSDR, SSNRIV, Defog
- Coax : Pelco-C (Coaxitron), 12V DC

## Dimensions

Unit : mm (inch)



## Accessories (Optional)



SBP-300WM0

|                                  |   | SCD-5030N | SCD-5030P                |
|----------------------------------|---|-----------|--------------------------|
| VIDEO                            |   |           |                          |
| Imaging Device                   | 1/3" 1.3M CMOS  |           |                          |
| Total Pixels                     | 1,312(H) x 1,069(V)   |           |                          |
| Effective Pixels                 | 1,305(H) x 1,049(V)   |           |                          |
| Scanning System                  | Progressive scan  |           |                          |
| Synchronization                  | Internal  |           |                          |
| Frequency                        | H : 15.734KHz / V : 59.94Hz   |           | H : 15.625KHz / V : 50Hz |
| Horizontal Resolution            | Color : 1000TV lines, B/W : 1000TV lines  |           |                          |
| Min. Illumination                | 0.09Lux (F1.8, 50IRE), 0.002Lux (1sec, F1.8, 50IRE)<br>0.05Lux (F1.8, 30IRE), 0.001Lux (1sec, F1.8, 30IRE)  |           |                          |
| S / N Ratio                      | 52dB (AGC off, Weight on)   |           |                          |
| Video Output                     | CVBS : 1.0 Vpp / 75Ω composite  |           |                          |
| LENS                             |   |           |                          |
| Focal Length (Zoom Ratio)        | 6mm (Fixed)   |           |                          |
| Max. Aperture Ratio              | F1.8  |           |                          |
| Angular Field of View            | H : 46.5° / V : 34.5° / D : 59.3°   |           |                          |
| Min. Object Distance             | 0.2m (0.66ft)   |           |                          |
| Lens Type                        | Fixed   |           |                          |
| Mount Type                       | Board type  |           |                          |
| PAN / TILT / ROTATE              |   |           |                          |
| Pan Range                        | 0° ~ 352°   |           |                          |
| Tilt Range                       | 0° ~ 75°  |           |                          |
| Rotate Range                     | 0° ~ 348°   |           |                          |
| OPERATIONAL                      |   |           |                          |
| On Screen Display                | English, Chinese, Korean, Japanese, German, Italian, French, Spanish, Russian, Czech, Polish, Romanian, Serbian, Swedish, Danish, Turkish, Portuguese |           |                          |
| Camera Title                     | Off / On (Displayed 15 characters)  |           |                          |
| Day & Night                      | Auto (Electrical) / Color / B/W   |           |                          |
| Backlight Compensation           | Off / User BLC / HLC  |           |                          |
| Contrast Enhancement             | SSDR (Off / On)   |           |                          |
| Digital Noise Reduction          | SSNR IV (Off / On)  |           |                          |
| Defog                            | Off / Auto / Manual   |           |                          |
| Purple Fringe Reduction          | Off / Low / Middle / High   |           |                          |
| Digital Image Stabilization      | Off / On  |           |                          |
| Tampering                        | Off / On  |           |                          |
| Motion Detection                 | Off / On  |           |                          |
| Privacy Masking                  | Off / On (24 programmable zones with 4 points polygonal masking)  |           |                          |
| Gain Control                     | Off / Low / Middle / High   |           |                          |
| White Balance                    | ATW / Outdoor / Indoor / Manual / AWC / Mercury (1,800K° ~ 10,500K°)  |           |                          |
| Electronic Shutter Speed         | 1sec ~ 1/12,000sec  |           |                          |
| Digital Zoom                     | Off / On (1x ~ 16x)   |           |                          |
| Reverse                          | Off / H-Rev / V-Rev / HV-Rev  |           |                          |
| Profile                          | Basic, Day & Night, Backlight, ITS, Indoor, User  |           |                          |
| Communication                    | Coaxial control (SPC-300 compatible)  |           |                          |
| Protocol                         | Coax : Pelco-C (Coaxitron)  |           |                          |
| ENVIRONMENTAL                    |   |           |                          |
| Operating Temperature / Humidity | -10°C ~ +55°C (+14°F ~ +131°F) / Less than 90% RH   |           |                          |
| ELECTRICAL                       |   |           |                          |
| Input Voltage / Current          | 12V DC ±10%   |           |                          |
| Power Consumption                | Max. 2.8W   |           |                          |
| MECHANICAL                       |   |           |                          |
| Color / Material                 | Ivory / Plastic (Dome cover : Clear)  |           |                          |
| Dimensions (WxH)                 | Ø107.6 x 84.0mm (Ø4.24" x 3.31")  |           |                          |
| Weight                           | 371g (0.82 lb)  |           |                          |

\* The latest product information / specification can be found at [www.samsungsecurity.com](http://www.samsungsecurity.com)

# BEYOND SCD-5020

1000TVL (1280H) Small Dome Camera

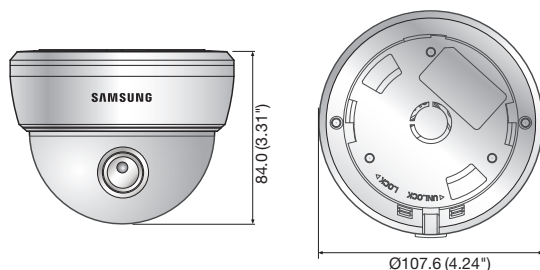


## Key Features

- High resolution of 1000TV lines (Color), 1000TV lines (B/W)
- Min. illumination 0.09Lux@F1.8, 50IRE, 0.05Lux@F1.8, 30IRE
- Built-in fixed lens (3.6mm)
- SSDR, SSNRIV, Defog
- Coax : Pelco-C (Coaxitron), 12V DC

## Dimensions

Unit : mm (inch)



## Accessories (Optional)



SBP-300WM0

|                                  |   | SCD-5020N | SCD-5020P                |
|----------------------------------|---|-----------|--------------------------|
| VIDEO                            |   |           |                          |
| Imaging Device                   | 1/3" 1.3M CMOS  |           |                          |
| Total Pixels                     | 1,312(H) x 1,069(V)   |           |                          |
| Effective Pixels                 | 1,305(H) x 1,049(V)   |           |                          |
| Scanning System                  | Progressive scan  |           |                          |
| Synchronization                  | Internal  |           |                          |
| Frequency                        | H : 15.734KHz / V : 59.94Hz   |           | H : 15.625KHz / V : 50Hz |
| Horizontal Resolution            | Color : 1000TV lines, B/W : 1000TV lines  |           |                          |
| Min. Illumination                | 0.09Lux (F1.8, 50IRE), 0.002Lux (1sec, F1.8, 50IRE)<br>0.05Lux (F1.8, 30IRE), 0.001Lux (1sec, F1.8, 30IRE)  |           |                          |
| S / N Ratio                      | 52dB (AGC off, Weight on)   |           |                          |
| Video Output                     | CVBS : 1.0 Vpp / 75Ω composite  |           |                          |
| LENS                             |   |           |                          |
| Focal Length (Zoom Ratio)        | 3.6mm (Fixed)   |           |                          |
| Max. Aperture Ratio              | F1.8  |           |                          |
| Angular Field of View            | H : 78° / V : 62.5° / D : 100°  |           |                          |
| Min. Object Distance             | 0.2m (0.66ft)   |           |                          |
| Lens Type                        | Fixed   |           |                          |
| Mount Type                       | Board type  |           |                          |
| PAN / TILT / ROTATE              |   |           |                          |
| Pan Range                        | 0° ~ 352°   |           |                          |
| Tilt Range                       | 0° ~ 70°  |           |                          |
| Rotate Range                     | 0° ~ 348°   |           |                          |
| OPERATIONAL                      |   |           |                          |
| On Screen Display                | English, Chinese, Korean, Japanese, German, Italian, French, Spanish, Russian, Czech, Polish, Romanian, Serbian, Swedish, Danish, Turkish, Portuguese |           |                          |
| Camera Title                     | Off / On (Displayed 15 characters)  |           |                          |
| Day & Night                      | Auto (Electrical) / Color / B/W   |           |                          |
| Backlight Compensation           | Off / User BLC / HLC  |           |                          |
| Contrast Enhancement             | SSDR (Off / On)   |           |                          |
| Digital Noise Reduction          | SSNR IV (Off / On)  |           |                          |
| Defog                            | Off / Auto / Manual   |           |                          |
| Purple Fringe Reduction          | Off / Low / Middle / High   |           |                          |
| Digital Image Stabilization      | Off / On  |           |                          |
| Tampering                        | Off / On  |           |                          |
| Motion Detection                 | Off / On  |           |                          |
| Privacy Masking                  | Off / On (24 programmable zones with 4 points polygonal masking)  |           |                          |
| Gain Control                     | Off / Low / Middle / High   |           |                          |
| White Balance                    | ATW / Outdoor / Indoor / Manual / AWC / Mercury (1,800K° ~ 10,500K°)  |           |                          |
| Electronic Shutter Speed         | 1sec ~ 1/12,000sec  |           |                          |
| Digital Zoom                     | Off / On (1x ~ 16x)   |           |                          |
| Reverse                          | Off / H-Rev / V-Rev / HV-Rev  |           |                          |
| Profile                          | Basic, Day & Night, Backlight, ITS, Indoor, User  |           |                          |
| Communication                    | Coaxial control (SPC-300 compatible)  |           |                          |
| Protocol                         | Coax : Pelco-C (Coaxitron)  |           |                          |
| ENVIRONMENTAL                    |   |           |                          |
| Operating Temperature / Humidity | -10°C ~ +55°C (+14°F ~ +131°F) / Less than 90% RH   |           |                          |
| ELECTRICAL                       |   |           |                          |
| Input Voltage / Current          | 12V DC ±10%   |           |                          |
| Power Consumption                | Max. 2.8W   |           |                          |
| MECHANICAL                       |   |           |                          |
| Color / Material                 | Ivory / Plastic (Dome cover : Clear)  |           |                          |
| Dimensions (WxH)                 | Ø107.6 x 84.0mm (Ø4.24" x 3.31")  |           |                          |
| Weight                           | 394g (0.87 lb)  |           |                          |

\* The latest product information / specification can be found at [www.samsungsecurity.com](http://www.samsungsecurity.com)

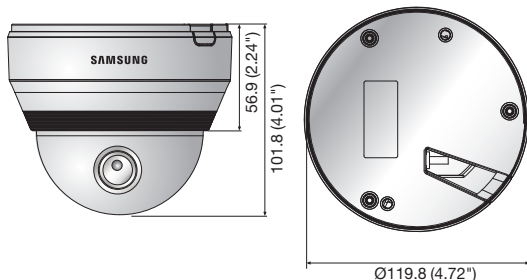


## Key Features

- High resolution of 1000TV lines (Color), 1000TV lines (B/W)
- Min. illumination 0Lux (IR LED on), IR distance 30m
- 3.3x varifocal lens (3 ~ 10mm)
- 120dB WDR, Day & Night (ICR)
- SSSR, SSNRIV, Defog, Intelligent video analytics
- Coax : Pelco-C (Coaxitron), Dual power

## Dimensions

Unit : mm (inch)



## Accessories (Optional)



SBP-301HM4 SBP-300LM SBP-300CM SBP-300WM1 SBP-300WM SBP-300B SBP-300PM SBP-300KM

| SCD-5083RN                       |   | SCD-5083RP               |
|----------------------------------|---|--------------------------|
| VIDEO                            |   |                          |
| Imaging Device                   | 1/3" 1.3M CMOS  |                          |
| Total Pixels                     | 1,312(H) x 1,069(V)   |                          |
| Effective Pixels                 | 1,305(H) x 1,049(V)   |                          |
| Scanning System                  | Progressive scan  |                          |
| Synchronization                  | Internal  |                          |
| Frequency                        | H : 15.734KHz / V : 59.94Hz   | H : 15.625KHz / V : 50Hz |
| Horizontal Resolution            | Color : 1000TV lines, B/W : 1000TV lines  |                          |
| Min. Illumination                | Color : 0.05Lux (F1.4, 50IRE), 0.001Lux (1sec, F1.4, 50IRE),<br>0.02Lux (F1.4, 30IRE), 0.0006Lux (1sec, F1.4, 30IRE)<br>B/W : 0Lux (IR LED on)        |                          |
| S / N Ratio                      | 52dB (AGC off, Weight on)   |                          |
| Video Output                     | CVBS : 1.0 Vpp / 75Ω composite  |                          |
| LENS                             |   |                          |
| Focal Length (Zoom Ratio)        | 3 ~ 10mm (3.3x) varifocal   |                          |
| Max. Aperture Ratio              | F1.4  |                          |
| Angular Field of View            | H : 82.0°(Wide) ~ 26.5°(Tele) / V : 59.7°(Wide) ~ 19.9°(Tele)   |                          |
| Min. Object Distance             | 0.5m (1.64ft)   |                          |
| Focus Control                    | Manual  |                          |
| Lens Type                        | DC auto iris  |                          |
| Mount Type                       | Board type  |                          |
| OPERATIONAL                      |   |                          |
| On Screen Display                | English, Chinese, Korean, Japanese, German, Italian, French, Spanish, Russian, Czech, Polish, Romanian, Serbian, Swedish, Danish, Turkish, Portuguese |                          |
| Camera Title                     | Off / On (Displayed 15 characters)  |                          |
| Day & Night                      | Auto (ICR) / External / Color / B/W   |                          |
| Anti IR Saturation               | Top / Bottom / Left / Right   |                          |
| Backlight Compensation           | Off / User BLC / HLC / WDR  |                          |
| Wide Dynamic Range               | 120dB   |                          |
| Contrast Enhancement             | SSDR (Off / On)   |                          |
| Digital Noise Reduction          | SSNR IV (Off / On)  |                          |
| Defog                            | Off / Auto / Manual   |                          |
| Purple Fringe Reduction          | Off / Low / Middle / High   |                          |
| Digital Image Stabilization      | Off / On  |                          |
| Tampering                        | Off / On  |                          |
| Motion Detection                 | Off / On  |                          |
| Intelligent Video Analytics      | Fence, (Dis)Appear, Counting (Off / On)   |                          |
| Privacy Masking                  | Off / On (24 programmable zones with 4 points polygonal masking)  |                          |
| Gain Control                     | Off / Low / Middle / High   |                          |
| White Balance                    | ATW / Outdoor / Indoor / Manual / AWC / Mercury (1,800K° ~ 10,500K°)  |                          |
| Electronic Shutter Speed         | 1sec ~ 1/12,000sec  |                          |
| Digital Zoom                     | Off / On (1x ~ 16x)   |                          |
| Reverse                          | Off / H-Rev / V-Rev / HV-Rev  |                          |
| Profile                          | Basic, Day & Night, Backlight, ITS, Indoor, User  |                          |
| Alarm                            | 1 Out   |                          |
| Communication                    | Coaxial control (SPC-300 compatible)  |                          |
| Protocol                         | Coax : Pelco-C (Coaxitron)  |                          |
| IR Distance                      | 30m (98.43ft) (IR LED 12ea)   |                          |
| ENVIRONMENTAL                    |   |                          |
| Operating Temperature / Humidity | -10°C ~ +55°C (+14°F ~ +131°F) / Less than 90% RH   |                          |
| ELECTRICAL                       |   |                          |
| Input Voltage / Current          | Dual (24V AC & 12V DC ±10%)   |                          |
| Power Consumption                | Max. 6W   |                          |
| MECHANICAL                       |   |                          |
| Color / Material                 | Ivory / Aluminum, Plastic   |                          |
| Dimensions (WxH)                 | Ø119.8 x 101.8mm (Ø4.72" x 4.01")   |                          |
| Weight                           | 550g (1.21 lb)  |                          |

\* The latest product information / specification can be found at [www.samsungsecurity.com](http://www.samsungsecurity.com)



# BEYOND SCV-5085

1000TVL (1280H) WDR Vandal-Resistant  
Dome Camera

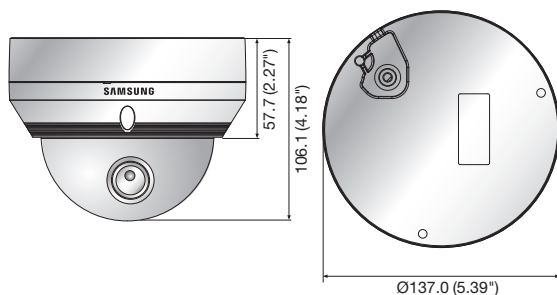


## Key Features

- High resolution of 1000TV lines (Color), 1000TV lines (B/W)
- 0.03Lux@F1.2, 50IRE (Color), 0.003Lux@F1.2 50IRE (B/W)  
0.01Lux@F1.2, 30IRE (Color), 0.001Lux@F1.2 30IRE (B/W)
- 3 ~ 8.5mm (2.8x) motorized varifocal lens
- 120dB WDR, Day & Night (ICR)
- SSSR, SSNRIV, Defog, Intelligent video analytics
- IP66, IK10, Coax : Pelco-C (Coaxitron), Dual power

## Dimensions

Unit : mm (inch)



## Accessories (Optional)



SBP-301HM2 SBP-300LM SBP-300CM SBP-300WM1 SBP-300WM SBP-300B SBP-300PM SBP-300KM

|                                  |  | SCV-5085N | SCV-5085P                |
|----------------------------------|--|-----------|--------------------------|
| VIDEO                            |  |           |                          |
| Imaging Device                   | 1/3" 1.3M CMOS   |           |                          |
| Total Pixels                     | 1,312(H) x 1,069(V)  |           |                          |
| Effective Pixels                 | 1,305(H) x 1,049(V)  |           |                          |
| Scanning System                  | Progressive scan   |           |                          |
| Synchronization                  | Internal   |           |                          |
| Frequency                        | H : 15.734KHz / V : 59.94Hz  |           | H : 15.625KHz / V : 50Hz |
| Horizontal Resolution            | Color : 1000TV lines, B/W : 1000TV lines   |           |                          |
| Min. Illumination                | Color : 0.03Lux (F1.2, 50IRE), 0.001Lux (1sec, F1.2, 50IRE),<br>0.01Lux (F1.2, 30IRE), 0.0003Lux (1sec, F1.2, 30IRE)<br>B/W : 0.003Lux (F1.2, 50IRE), 0.0001Lux (1sec, F1.2, 50IRE),<br>0.001Lux (F1.2, 30IRE), 0.00003Lux (1sec, F1.2, 30IRE) |           |                          |
| S / N Ratio                      | 52dB (AGC off, Weight on)  |           |                          |
| Video Output                     | CVBS : 1.0 Vpp / 75Ω composite   |           |                          |
| LENS                             |  |           |                          |
| Focal Length (Zoom Ratio)        | 3 ~ 8.5mm (2.8x) motorized varifocal lens  |           |                          |
| Max. Aperture Ratio              | F1.2   |           |                          |
| Angular Field of View            | H : 105.5°(Wide) ~ 37.1°(Tele) / V : 57.5°(Wide) ~ 21°(Tele)   |           |                          |
| Min. Object Distance             | 0.5m (1.64ft)  |           |                          |
| Focus Control                    | Manual   |           |                          |
| Lens Type                        | DC auto iris   |           |                          |
| Mount Type                       | Board type   |           |                          |
| OPERATIONAL                      |  |           |                          |
| On Screen Display                | English, Chinese, Korean, Japanese, German, Italian, French, Spanish, Russian, Czech, Polish, Romanian, Serbian, Swedish, Danish, Turkish, Portuguese  |           |                          |
| Camera Title                     | Off / On (Displayed 15 characters)   |           |                          |
| Day & Night                      | Auto (ICR) / External / Color / B/W  |           |                          |
| Backlight Compensation           | Off / User BLC / HLC / WDR   |           |                          |
| Wide Dynamic Range               | 120dB  |           |                          |
| Contrast Enhancement             | SSDR (Off / On)  |           |                          |
| Digital Noise Reduction          | SSNR IV (Off / On)   |           |                          |
| Defog                            | Off / Auto / Manual  |           |                          |
| Purple Fringe Reduction          | Off / Low / Middle / High  |           |                          |
| Digital Image Stabilization      | Off / On   |           |                          |
| Tampering                        | Off / On   |           |                          |
| Motion Detection                 | Off / On   |           |                          |
| Intelligent Video Analytics      | Fence, (Dis)Appear, Counting (Off / On)  |           |                          |
| Privacy Masking                  | Off / On (24 programmable zones with 4 points polygonal masking)   |           |                          |
| Gain Control                     | Off / Low / Middle / High  |           |                          |
| White Balance                    | ATW / Outdoor / Indoor / Manual / AWC / Mercury (1,800K° ~ 10,500K°)   |           |                          |
| Electronic Shutter Speed         | 1sec ~ 1/12,000sec   |           |                          |
| Digital Zoom                     | Off / On (1x ~ 16x)  |           |                          |
| Reverse                          | Off / H-Rev / V-Rev / HV-Rev   |           |                          |
| Profile                          | Basic, Day & Night, Backlight, ITS, Indoor, User   |           |                          |
| Alarm                            | 1 Out  |           |                          |
| Communication                    | Coaxial control (SPC-300 compatible)   |           |                          |
| Protocol                         | Coax : Pelco-C (Coaxitron)   |           |                          |
| ENVIRONMENTAL                    |  |           |                          |
| Operating Temperature / Humidity | -30°C ~ +55°C (-22°F ~ +131°F) / Less than 90% RH<br>*Start up should be done at above -10°C (+14°F)   |           |                          |
| Ingress Protection               | IP66   |           |                          |
| Vandal Resistance                | IK10   |           |                          |
| ELECTRICAL                       |  |           |                          |
| Input Voltage / Current          | Dual (24V AC & 12V DC ±10%)  |           |                          |
| Power Consumption                | Max. 5W  |           |                          |
| MECHANICAL                       |  |           |                          |
| Color / Material                 | Ivory / Aluminum   |           |                          |
| Dimensions (WxH)                 | Ø137.0 x 106.1mm (Ø5.39" x 4.18")  |           |                          |
| Weight                           | 772g (1.7 lb)  |           |                          |

\* The latest product information / specification can be found at [www.samsungsecurity.com](http://www.samsungsecurity.com)



# BEYOND SCV-5083

1000TVL (1280H) WDR Vandal-Resistant  
Dome Camera

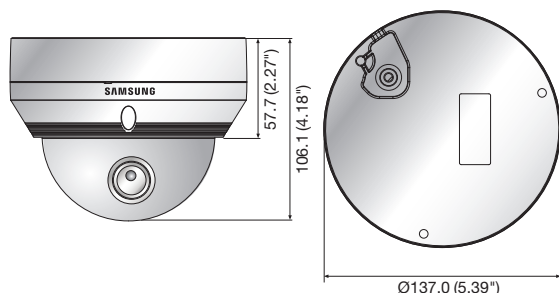


## Key Features

- High resolution of 1000TV lines (Color), 1000TV lines (B/W)
- 0.03Lux@F1.2, 50IRE (Color), 0.003Lux@F1.2 50IRE (B/W)  
0.01Lux@F1.2, 30IRE (Color), 0.001Lux@F1.2 30IRE (B/W)
- 3.8x varifocal lens (2.8 ~ 10.5mm)
- 120dB WDR, Day & Night (ICR)
- SSSR, SSNRIV, Defog, Intelligent video analytics
- IP66, IK10, Coax : Pelco-C (Coaxitron), Dual power

## Dimensions

Unit : mm (inch)



## Accessories (Optional)



SBP-301HM2 SBP-300LM SBP-300CM SBP-300WM1 SBP-300WM SBP-300B SBP-300PM SBP-300KM

|                                  |  | SCV-5083N | SCV-5083P                |
|----------------------------------|--|-----------|--------------------------|
| VIDEO                            |  |           |                          |
| Imaging Device                   | 1/3" 1.3M CMOS   |           |                          |
| Total Pixels                     | 1,312(H) x 1,069(V)  |           |                          |
| Effective Pixels                 | 1,305(H) x 1,049(V)  |           |                          |
| Scanning System                  | Progressive scan   |           |                          |
| Synchronization                  | Internal   |           |                          |
| Frequency                        | H : 15.734KHz / V : 59.94Hz  |           | H : 15.625KHz / V : 50Hz |
| Horizontal Resolution            | Color : 1000TV lines, B/W : 1000TV lines   |           |                          |
| Min. Illumination                | Color : 0.03Lux (F1.2, 50IRE), 0.001Lux (1sec, F1.2, 50IRE),<br>0.01Lux (F1.2, 30IRE), 0.0003Lux (1sec, F1.2, 30IRE)<br>B/W : 0.003Lux (F1.2, 50IRE), 0.0001Lux (1sec, F1.2, 50IRE),<br>0.001Lux (F1.2, 30IRE), 0.00003Lux (1sec, F1.2, 30IRE) |           |                          |
| S / N Ratio                      | 52dB (AGC off, Weight on)  |           |                          |
| Video Output                     | CVBS : 1.0Vpp / 75Ω composite  |           |                          |
| LENS                             |  |           |                          |
| Focal Length (Zoom Ratio)        | 2.8 ~ 10.5mm (3.8x) varifocal  |           |                          |
| Max. Aperture Ratio              | F1.2   |           |                          |
| Angular Field of View            | H : 91.5°(Wide) ~ 27.7°(Tele) / V : 68.3°(Wide) ~ 20.8°(Tele)  |           |                          |
| Min. Object Distance             | 0.5m (1.64ft)  |           |                          |
| Focus Control                    | Manual   |           |                          |
| Lens Type                        | DC auto iris   |           |                          |
| Mount Type                       | Board type   |           |                          |
| OPERATIONAL                      |  |           |                          |
| On Screen Display                | English, Chinese, Korean, Japanese, German, Italian, French, Spanish, Russian, Czech, Polish, Romanian, Serbian, Swedish, Danish, Turkish, Portuguese  |           |                          |
| Camera Title                     | Off / On (Displayed 15 characters)   |           |                          |
| Day & Night                      | Auto (ICR) / External / Color / B/W  |           |                          |
| Backlight Compensation           | Off / User BLC / HLC / WDR   |           |                          |
| Wide Dynamic Range               | 120dB  |           |                          |
| Contrast Enhancement             | SSDR (Off / On)  |           |                          |
| Digital Noise Reduction          | SSNR IV (Off / On)   |           |                          |
| Defog                            | Off / Auto / Manual  |           |                          |
| Purple Fringe Reduction          | Off / Low / Middle / High  |           |                          |
| Digital Image Stabilization      | Off / On   |           |                          |
| Tampering                        | Off / On   |           |                          |
| Motion Detection                 | Off / On   |           |                          |
| Intelligent Video Analytics      | Fence, (Dis)Appear, Counting (Off / On)  |           |                          |
| Privacy Masking                  | Off / On (24 programmable zones with 4 points polygonal masking)   |           |                          |
| Gain Control                     | Off / Low / Middle / High  |           |                          |
| White Balance                    | ATW / Outdoor / Indoor / Manual / AWC / Mercury (1,800K° ~ 10,500K°)   |           |                          |
| Electronic Shutter Speed         | 1sec ~ 1/12,000sec   |           |                          |
| Digital Zoom                     | Off / On (1x ~ 16x)  |           |                          |
| Reverse                          | Off / H-Rev / V-Rev / HV-Rev   |           |                          |
| Profile                          | Basic, Day & Night, Backlight, ITS, Indoor, User   |           |                          |
| Alarm                            | 1 Out  |           |                          |
| Communication                    | Coaxial control (SPC-300 compatible)   |           |                          |
| Protocol                         | Coax : Pelco-C (Coaxitron)   |           |                          |
| ENVIRONMENTAL                    |  |           |                          |
| Operating Temperature / Humidity | -30°C ~ +55°C (-22°F ~ +131°F) / Less than 90% RH<br>*Start up should be done at above -10°C (+14°F)   |           |                          |
| Ingress Protection               | IP66   |           |                          |
| Vandal Resistance                | IK10   |           |                          |
| ELECTRICAL                       |  |           |                          |
| Input Voltage / Current          | Dual (24V AC & 12V DC ±10%)  |           |                          |
| Power Consumption                | Max. 5.6W  |           |                          |
| MECHANICAL                       |  |           |                          |
| Color / Material                 | Ivory / ALDC   |           |                          |
| Dimensions (WxH)                 | Ø137.0 x 106.1mm (Ø5.39" x 4.18")  |           |                          |
| Weight                           | 720g (1.59 lb)   |           |                          |

\* The latest product information / specification can be found at [www.samsungsecurity.com](http://www.samsungsecurity.com)

# BEYOND SCV-5082

1000TVL (1280H) Vandal-Resistant Dome Camera

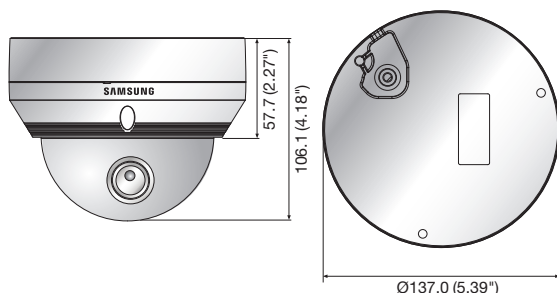


## Key Features

- High resolution of 1000TV lines (Color), 1000TV lines (B/W)
- 0.05Lux@F1.4, 50IRE (Color), 0.005Lux@F1.4 50IRE (B/W)  
0.02Lux@F1.4, 30IRE (Color), 0.002Lux@F1.4 30IRE (B/W)
- 3.3x varifocal lens (3 ~ 10mm)
- Day & Night (ICR), SSDR, SSNRIV, Defog
- IP66, IK10, Coax : Pelco-C (Coaxitron), Dual power

## Dimensions

Unit : mm (inch)



## Accessories (Optional)



SBP-301HM2 SBP-300LM SBP-300CM SBP-300WM1 SBP-300WM SBP-300B SBP-300PM SBP-300KM

|                                  |  | SCV-5082N | SCV-5082P                |
|----------------------------------|--|-----------|--------------------------|
| VIDEO                            |  |           |                          |
| Imaging Device                   | 1/3" 1.3M CMOS   |           |                          |
| Total Pixels                     | 1,312(H) x 1,069(V)  |           |                          |
| Effective Pixels                 | 1,305(H) x 1,049(V)  |           |                          |
| Scanning System                  | Progressive scan   |           |                          |
| Synchronization                  | Internal   |           |                          |
| Frequency                        | H : 15.734KHz / V : 59.94Hz  |           | H : 15.625KHz / V : 50Hz |
| Horizontal Resolution            | Color : 1000TV lines, B/W : 1000TV lines   |           |                          |
| Min. Illumination                | Color : 0.05Lux (F1.4, 50IRE), 0.001Lux (1sec, F1.4, 50IRE),<br>0.02Lux (F1.4, 30IRE), 0.0006Lux (1sec, F1.4, 30IRE)<br>B/W : 0.005Lux (F1.4, 50IRE), 0.0001Lux (1sec, F1.4, 50IRE),<br>0.002Lux (F1.4, 30IRE), 0.00006Lux (1sec, F1.4, 30IRE) |           |                          |
| S / N Ratio                      | 52dB (AGC off, Weight on)  |           |                          |
| Video Output                     | CVBS : 1.0 Vpp / 75Ω composite   |           |                          |
| LENS                             |  |           |                          |
| Focal Length (Zoom Ratio)        | 3 ~ 10mm (3.3x) varifocal  |           |                          |
| Max. Aperture Ratio              | F1.4   |           |                          |
| Angular Field of View            | H : 82.0°(Wide) ~ 26.5°(Tele) / V : 59.7°(Wide) ~ 19.9°(Tele)  |           |                          |
| Min. Object Distance             | 0.5m (1.64ft)  |           |                          |
| Focus Control                    | Manual   |           |                          |
| Lens Type                        | DC auto iris   |           |                          |
| Mount Type                       | Board type   |           |                          |
| OPERATIONAL                      |  |           |                          |
| On Screen Display                | English, Chinese, Korean, Japanese, German, Italian, French, Spanish, Russian, Czech, Polish, Romanian, Serbian, Swedish, Danish, Turkish, Portuguese  |           |                          |
| Camera Title                     | Off / On (Displayed 15 characters)   |           |                          |
| Day & Night                      | Auto (ICR) / Color / B/W   |           |                          |
| Backlight Compensation           | Off / User BLC / HLC   |           |                          |
| Contrast Enhancement             | SSDR (Off / On)  |           |                          |
| Digital Noise Reduction          | SSNR IV (Off / On)   |           |                          |
| Defog                            | Off / Auto / Manual  |           |                          |
| Purple Fringe Reduction          | Off / Low / Middle / High  |           |                          |
| Digital Image Stabilization      | Off / On   |           |                          |
| Tampering                        | Off / On   |           |                          |
| Motion Detection                 | Off / On   |           |                          |
| Privacy Masking                  | Off / On (24 programmable zones with 4 points polygonal masking)   |           |                          |
| Gain Control                     | Off / Low / Middle / High  |           |                          |
| White Balance                    | ATW / Outdoor / Indoor / Manual / AWC / Mercury (1,800K° ~ 10,500K°)   |           |                          |
| Electronic Shutter Speed         | 1sec ~ 1/12,000sec   |           |                          |
| Digital Zoom                     | Off / On (1x ~ 16x)  |           |                          |
| Reverse                          | Off / H-Rev / V-Rev / HV-Rev   |           |                          |
| Profile                          | Basic, Day & Night, Backlight, ITS, Indoor, User   |           |                          |
| Communication                    | Coaxial control (SPC-300 compatible)   |           |                          |
| Protocol                         | Coax : Pelco-C (Coaxitron)   |           |                          |
| ENVIRONMENTAL                    |  |           |                          |
| Operating Temperature / Humidity | -30°C ~ +55°C (-22°F ~ +131°F) / Less than 90% RH<br>*Start up should be done at above -10°C (+14°F)   |           |                          |
| Ingress Protection               | IP66   |           |                          |
| Vandal Resistance                | IK10   |           |                          |
| ELECTRICAL                       |  |           |                          |
| Input Voltage / Current          | Dual (24V AC & 12V DC ±10%)  |           |                          |
| Power Consumption                | Max. 5.6W  |           |                          |
| MECHANICAL                       |  |           |                          |
| Color / Material                 | Ivory / Aluminum   |           |                          |
| Dimensions (WxH)                 | Ø137.0 x 106.1mm (Ø5.39" x 4.18")  |           |                          |
| Weight                           | 730g (1.61 lb)   |           |                          |

\* The latest product information / specification can be found at [www.samsungsecurity.com](http://www.samsungsecurity.com)

# BEYOND SCV-5083R

1000TVL (1280H) WDR Vandal-Resistant  
IR Dome Camera

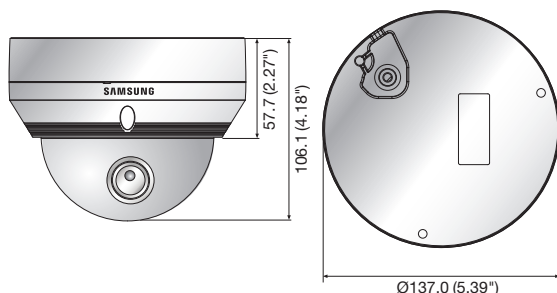


## Key Features

- High resolution of 1000TV lines (Color), 1000TV lines (B/W)
- Min. Illumination 0Lux (IR LED on), IR distance 30m
- 3.3x varifocal lens (3 ~ 10mm)
- 120dB WDR, Day & Night (ICR)
- SSSR, SSNRIV, Defog, Intelligent video analytics
- IP66, IK10, Coax : Pelco-C (Coaxitron), RS-485, Dual power

## Dimensions

Unit : mm (inch)



## Accessories (Optional)



SBP-301HM2 SBP-300LM SBP-300CM SBP-300WM1 SBP-300WM SBP-300B SBP-300PM SBP-300KM

|                                  | SCV-5083RN  |  | SCV-5083RP               |
|----------------------------------|---|--|--------------------------|
| VIDEO                            |   |  |                          |
| Imaging Device                   | 1/3" 1.3M CMOS  |  |                          |
| Total Pixels                     | 1,312(H) x 1,069(V)   |  |                          |
| Effective Pixels                 | 1,305(H) x 1,049(V)   |  |                          |
| Scanning System                  | Progressive scan  |  |                          |
| Synchronization                  | Internal  |  |                          |
| Frequency                        | H : 15.734KHz / V : 59.94Hz   |  | H : 15.625KHz / V : 50Hz |
| Horizontal Resolution            | Color : 1000TV lines, B/W : 1000TV lines  |  |                          |
| Min. Illumination                | Color : 0.05Lux (F1.4, 50IRE), 0.001Lux (1sec, F1.4, 50IRE),<br>0.02Lux (F1.4, 30IRE), 0.0006Lux (1sec, F1.4, 30IRE)<br>B/W : 0Lux (IR LED on)        |  |                          |
| S / N Ratio                      | 52dB (AGC off, Weight on)   |  |                          |
| Video Output                     | CVBS : 1.0 Vpp / 75Ω composite  |  |                          |
| LENS                             |   |  |                          |
| Focal Length (Zoom Ratio)        | 3 ~ 10mm (3.3x) varifocal   |  |                          |
| Max. Aperture Ratio              | F1.4  |  |                          |
| Angular Field of View            | H : 82.0°(Wide) ~ 26.5°(Tele) / V : 59.7°(Wide) ~ 19.9°(Tele)   |  |                          |
| Min. Object Distance             | 0.5m (1.64ft)   |  |                          |
| Focus Control                    | Manual  |  |                          |
| Lens Type                        | DC auto iris  |  |                          |
| Mount Type                       | Board type  |  |                          |
| OPERATIONAL                      |   |  |                          |
| On Screen Display                | English, Chinese, Korean, Japanese, German, Italian, French, Spanish, Russian, Czech, Polish, Romanian, Serbian, Swedish, Danish, Turkish, Portuguese |  |                          |
| Camera Title                     | Off / On (Displayed 15 characters)  |  |                          |
| Day & Night                      | Auto (ICR) / External / Color / B/W   |  |                          |
| Anti IR Saturation               | Top / Bottom / Left / Right   |  |                          |
| Backlight Compensation           | Off / User BLC / HLC / WDR  |  |                          |
| Wide Dynamic Range               | 120dB   |  |                          |
| Contrast Enhancement             | SSDR (Off / On)   |  |                          |
| Digital Noise Reduction          | SSNR IV (Off / On)  |  |                          |
| Defog                            | Off / Auto / Manual   |  |                          |
| Purple Fringe Reduction          | Off / Low / Middle / High   |  |                          |
| Digital Image Stabilization      | Off / On  |  |                          |
| Tampering                        | Off / On  |  |                          |
| Motion Detection                 | Off / On  |  |                          |
| Intelligent Video Analytics      | Fence, (Dis)Appear, Counting (Off / On)   |  |                          |
| Privacy Masking                  | Off / On (24 programmable zones with 4 points polygonal masking)  |  |                          |
| Gain Control                     | Off / Low / Middle / High   |  |                          |
| White Balance                    | ATW / Outdoor / Indoor / Manual / AWC / Mercury (1,800K° ~ 10,500K°)  |  |                          |
| Electronic Shutter Speed         | 1sec ~ 1/12,000sec  |  |                          |
| Digital Zoom                     | Off / On (1x ~ 16x)   |  |                          |
| Reverse                          | Off / H-Rev / V-Rev / HV-Rev  |  |                          |
| Profile                          | Basic, Day & Night, Backlight, ITS, Indoor, User  |  |                          |
| Alarm                            | 1 Out   |  |                          |
| Communication                    | Coaxial control (SPC-300 compatible), RS-485  |  |                          |
| Protocol                         | Coax : Pelco-C (Coaxitron)<br>RS-485 : Samsung-T/E, Pelco-D/P, Panasonic, Bosch, Honeywell, Vicon, AD, GE   |  |                          |
| IR Distance                      | 30m (98.43ft) (IR LED 12ea)   |  |                          |
| ENVIRONMENTAL                    |   |  |                          |
| Operating Temperature / Humidity | -30°C ~ +55°C (-22°F ~ +131°F) / Less than 90% RH<br>*Start up should be done at above -10°C (+14°F)  |  |                          |
| Ingress Protection               | IP66  |  |                          |
| Vandal Resistance                | IK10  |  |                          |
| ELECTRICAL                       |   |  |                          |
| Input Voltage / Current          | Dual (24V AC & 12V DC ±10%)   |  |                          |
| Power Consumption                | Max. 6W   |  |                          |
| MECHANICAL                       |   |  |                          |
| Color / Material                 | Ivory / Aluminum  |  |                          |
| Dimensions (WxH)                 | Ø137.0 x 106.1mm (Ø5.39" x 4.18")   |  |                          |
| Weight                           | 750g (1.65 lb)  |  |                          |

\* The latest product information / specification can be found at [www.samsungsecurity.com](http://www.samsungsecurity.com)

# BEYOND SRD-1676D

16CH 1280H Real-time Coaxial DVR

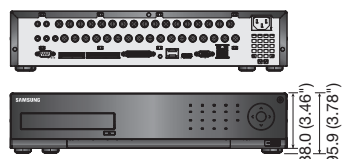
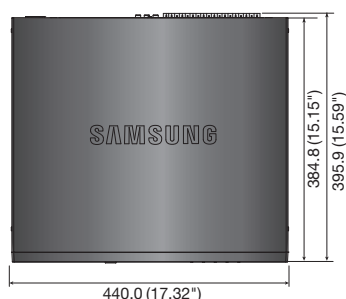


## Key Features

- 16CH 1280H real-time DVR
- Up to 480(NTSC) / 400(PAL)fps recording rate
- HDMI / VGA video output
- 16CH audio inputs / 1CH audio output
- Max. 4 internal HDDs
- PTZ control via coaxial cable (Samsung CCVC, Pelco-C)
- DVD-RW, Smart phone support (Android / iOS)
- Accurate still image (De-Interlace support each channel)
- Enhanced Network Bandwidth up to 32Mbps

## Dimensions

Unit : mm (inch)



| SRD-1676D          |  |  |
|--------------------|--|--|
| <b>DISPLAY</b>     |  |  |
| Video              | Inputs   | 16 Composite video 0.5-1 Vpp, 75 ohm automatic termination   |
|                    | Resolution   | NTSC : 1280 x 480, 720 x 480 / PAL : 1280 x 576, 720 x 576   |
| Live               | Frame Rate   | NTSC : 480fps / PAL : 400fps   |
|                    | Resolution   | NTSC : 1280 x 480, 720 x 480 / PAL : 1280 x 576, 720 x 576   |
|                    | Multi Screen Display   | 1 / 4 / 7 / 9 / 13 / 16 / 16A / Sequence / PIP   |
| <b>PERFORMANCE</b> |  |  |
| Operating System   | Embedded   | Linux  |
|                    | Compression  | H.264  |
| Recording          | Record Rate  | NTSC : Up to 480fps@1280 x 480 / PAL : Up to 400fps@1280 x 576<br>NTSC : Up to 480fps@704 x 480 / PAL : Up to 400fps@704 x 576<br>NTSC : Up to 480fps@704 x 240 / PAL : Up to 400fps@704 x 288<br>NTSC : Up to 480fps@352 x 240 / PAL : Up to 400fps@352 x 288 |
|                    | Mode   | NTSC : Manual, Schedule (Continuous / Event), Event (Pre / Post), Time lapse (1 ~ 30 fps)<br>PAL : Manual, Schedule (Continuous / Event), Event (Pre / Post), Time lapse (1 ~ 25fps)   |
|                    | Event  | Video loss, Motion (Level 1 ~ 10), Alarm, Tampering (Level 1 ~ 3)  |
|                    | Overwrite Modes  | Selectable (Stop / Continuous)   |
|                    | Pre-alarm  | Up to 30sec (5, 10, 20, 30sec)   |
|                    | Post-alarm   | Up to 6hour (5, 10, 20, 30sec, 1, 3, 5, 10, 20min, 1, 2, 3, 4, 5, 6hour)   |
|                    | Search Mode  | Date/Time, Event, Back up, POS, Motion (*All search include preview function)  |
| Search & Playback  | Playback Function  | Fast forward / backward (2x, 4x, 8x, 16x, 32x, 64x) *Backward play with i-frame only<br>Slow forward / backward (1/2x, 1/4x, 1/8x)<br>Step forward / backward *Backward play with i-frame only   |
|                    | Transmission Speed   | 4CIF / 2CIF / CIF (NTSC : 120 / 240 / 480fps, PAL : 100 / 200 / 400fps)  |
| Network (IPv4)     | Bandwidth  | Up to 32Mbps   |
|                    | Bandwidth Control  | Selectable   |
|                    | Stream   | H.264 (4CIF / 2CIF / CIF selectable)   |
|                    | Max. Remote Users  | Search 3 / Live unicast 10 / Live multicast 20   |
|                    | Protocol Support   | TCP/IP, DHCP, PPPoE, SMTP, NTP, HTTP, HTTPS, DDNS, RTP, RTSP, SNMP   |
| Smart Phone        | Monitoring   | SmartViewer, Webviewer, SSM (CMS)  |
|                    | Platform   | Android, iOS   |
|                    | Protocol Support   | RTP, RTSP, HTTP, CGI   |
| Storage            | Max. Remote Users  | Live 2, Search 1   |
|                    | Internal HDD   | Up to 4 SATA HDDs  |
|                    | External (e-SATA Interface)  | 2 External SATA ports (*Expansion bay, Model : SVS-5R/5E)  |
|                    | DVD Writer (Back up)   | Yes  |
|                    | USB (Back up)  | 2 USB ports  |
| Security           | File Format (Back up)  | BU (DVR player), EXE (Include player), AVI   |
|                    | Password Protection  | 1 Admin, 10 Group, 10 User per 1 group   |
|                    | Data Authentication  | Watermark  |
| <b>INTERFACE</b>   |  |  |
| Monitors           | VGA  | 1 VGA (1280 x 720, 1280 x 1024, 1920 x 1080)   |
|                    | HDMI   | 1 HDMI (1280 x 720, 1280 x 1024, 1920 x 1080)  |
|                    | Spot Composite)  | Digital spot (2CH) *Included OSD on screen, multi mode support (1CH)   |
|                    | Loop Outputs   | 16CH   |
| Audio              | Inputs / Output  | 16CH line in (Built-in 4CH, option : audio extension cable) / 1CH line out   |
|                    | Compression  | G.711  |
|                    | Sampling Rate  | 8KHz   |
| Alarm              | Inputs / Output  | Terminal 16 inputs (NO/NC) / Terminal 4 relay outputs (NO/NC),<br>Rating : 30V DC / 2A, 250V AC / 0.25A  |
|                    | Remote Notification  | Notification via e-mail  |
| Connections        | Ethernet   | 1 RJ-45 10/100/1000 Base-T   |
|                    | Serial Interface   | RS-232/RS-485 (Full duplex) for PTZ, Samsung system keyboard   |
|                    | USB  | USB 2.0, 2 ports   |
|                    | eSATA  | 2 External SATA ports  |
|                    | Application Support  | Mouse, Remote controller   |
|                    | RS-485 Protocol  | Samsung-T/E, Pelco-D/P, Panasonic, Phillips, AD, DIAMOND, ERNA, KALATEL, VCL TP, VICON, ELMO, GE   |
|                    | Coax Protocol  | Samsung CCVC, Pelco-C  |
| <b>GENERAL</b>     |  |  |
| Electrical         | Input Voltage / Current  | 100 ~ 240V AC $\pm 10\%$ , 50/60Hz, Auto ranging   |
|                    | Power Consumption  | Max. 60W (With 1x HDD)   |
| Environmental      | Operating Temperature  | +0°C ~ +40°C (+32°F ~ +104°F)  |
|                    | Operating Humidity   | 20% ~ 85% RH   |
| Mechanical         | Dimensions (WxHxD)   | 440.0 x 88.0 x 384.8mm (17.32" x 3.46" x 15.15")   |
|                    | Weight (With hard disks)   | Approx. 6.6Kg (14.61 lb)   |
|                    | Rack Mountable   | Yes  |
| Language           | English, French, German, Spanish, Italian, Russian, Polish, Czech, Turkish, Netherlands, Portuguese, Swedish, Danish, Rumania, Serbia, Croatia, Hungary, Greek, Finnish, Norwegian, Korean, Japanese, Chinese (Traditional), Thai, Taiwanese (25 Language) |  |

\* The latest product information / specification can be found at [www.samsungsecurity.com](http://www.samsungsecurity.com)

# BEYOND SRD-1656D

16CH CIF (1280H available) Real-time DVR

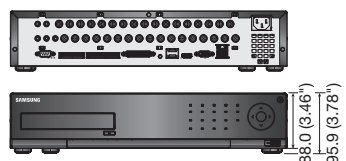
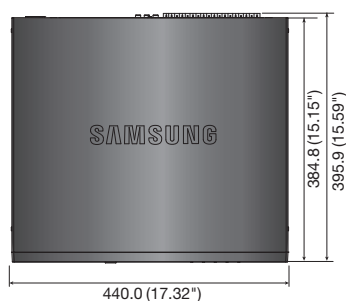


## Key Features

- 16CH CIF real-time DVR
- Up to 480(NTSC) / 400(PAL)fps recording rate
- HDMI / VGA video output
- 16CH audio inputs / 1CH audio output
- Max. 4 internal HDDs
- PTZ control via coaxial cable (Samsung CCVC, Pelco-C)
- DVD-RW, Smart phone support (Android / iOS)
- Accurate still image (De-Interlace support each channel)
- Enhanced Network Bandwidth up to 32Mbps

## Dimensions

Unit : mm (inch)



| SRD-1656D          |                             |  |
|--------------------|-----------------------------|--|
| <b>DISPLAY</b>     |                             |  |
| Video              | Inputs                      | 16 Composite video 0.5-1 Vpp, 75 ohm automatic termination   |
|                    | Resolution                  | NTSC : 1280 x 480, 720 x 480 / PAL : 1280 x 576, 720 x 576   |
| Live               | Frame Rate                  | NTSC : 480fps / PAL : 400fps   |
|                    | Resolution                  | NTSC : 1280 x 480, 720 x 480 / PAL : 1280 x 576, 720 x 576   |
|                    | Multi Screen Display        | 1 / 4 / 7 / 9 / 13 / 16 / 16A / Sequence / PIP   |
| <b>PERFORMANCE</b> |                             |  |
| Operating System   | Embedded                    | Linux  |
|                    | Compression                 | H.264  |
| Recording          | Record Rate                 | NTSC : Up to 120fps@1280 x 480 / PAL : Up to 100fps@1280 x 576<br>NTSC : Up to 120fps@704 x 480 / PAL : Up to 100fps@704 x 576<br>NTSC : Up to 240fps@704 x 240 / PAL : Up to 200fps@704 x 288<br>NTSC : Up to 480fps@352 x 240 / PAL : Up to 400fps@352 x 288 |
|                    | Mode                        | NTSC : Manual, Schedule (Continuous / Event), Event (Pre / Post), Time lapse (1 ~ 30 fps)<br>PAL : Manual, Schedule (Continuous / Event), Event (Pre / Post), Time lapse (1 ~ 25fps)   |
|                    | Event                       | Video loss, Motion (Level 1 ~ 10), Alarm, Tampering (Level 1 ~ 3)  |
|                    | Overwrite Modes             | Selectable (Stop / Continuous)   |
|                    | Pre-alarm                   | Up to 30sec (5, 10, 20, 30sec)   |
|                    | Post-alarm                  | Up to 6hour (5, 10, 20, 30sec, 1, 3, 5, 10, 20min, 1, 2, 3, 4, 5, 6hour)   |
|                    | Search Mode                 | Date/Time, Event, Back up, POS, Motion (*All search include preview function)  |
| Search & Playback  | Playback Function           | Fast forward / backward (2x, 4x, 8x, 16x, 32x, 64x) *Backward play with i-frame only<br>Slow forward / backward (1/2x, 1/4x, 1/8x)<br>Step forward / backward *Backward play with i-frame only   |
|                    | Transmission Speed          | 4CIF / 2CIF / CIF (NTSC : 120 / 240 / 480fps, PAL : 100 / 200 / 400fps)  |
| Network (IPv4)     | Bandwidth                   | Up to 32Mbps   |
|                    | Bandwidth Control           | Selectable   |
|                    | Stream                      | H.264 (4CIF / 2CIF / CIF selectable)   |
|                    | Max. Remote Users           | Search 3 / Live unicast 10 / Live multicast 20   |
|                    | Protocol Support            | TCP/IP, DHCP, PPPoE, SMTP, NTP, HTTP, HTTPS, DDNS, RTP, RTSP, SNMP   |
| Smart Phone        | Monitoring                  | SmartViewer, Webviewer, SSM (CMS)  |
|                    | Platform                    | Android, iOS   |
|                    | Protocol Support            | RTP, RTSP, HTTP, CGI   |
| Storage            | Max. Remote Users           | Live 2, Search 1   |
|                    | Internal HDD                | Up to 4 SATA HDDs  |
|                    | External (e-SATA Interface) | 2 External SATA ports (*Expansion bay, Model : SVS-5R/5E)  |
|                    | DVD Writer (Back up)        | Yes  |
|                    | USB (Back up)               | 2 USB ports  |
| Security           | File Format (Back up)       | BU (DVR player), EXE (Include player), AVI   |
|                    | Password Protection         | 1 Admin, 10 Group, 10 User per 1 group   |
|                    | Data Authentication         | Watermark  |
| <b>INTERFACE</b>   |                             |  |
| Monitors           | VGA                         | 1 VGA (1280 x 720, 1280 x 1024, 1920 x 1080)   |
|                    | HDMI                        | 1 HDMI (1280 x 720, 1280 x 1024, 1920 x 1080)  |
|                    | Spot Composite              | Digital spot (2CH) *Included OSD on screen, multi mode support (1CH)   |
|                    | Loop Outputs                | 16CH   |
| Audio              | Inputs / Output             | 16CH line in (Built-in 4CH, option : audio extension cable) / 1CH line out   |
|                    | Compression                 | G.711  |
|                    | Sampling Rate               | 8KHz   |
| Alarm              | Inputs / Output             | Terminal 16 inputs (NO/NC) / Terminal 4 relay outputs (NO/NC),<br>Rating : 30V DC / 2A, 250V AC / 0.25A  |
|                    | Remote Notification         | Notification via e-mail  |
| Connections        | Ethernet                    | 1 RJ-45 10/100/1000 Base-T   |
|                    | Serial Interface            | RS-232/RS-485 (Full duplex) for PTZ, Samsung system keyboard   |
|                    | USB                         | USB 2.0, 2 ports   |
|                    | eSATA                       | 2 External SATA ports  |
|                    | Application Support         | Mouse, Remote controller   |
|                    | RS-485 Protocol             | Samsung-T/E, Pelco-D/P, Panasonic, Phillips, AD, DIAMOND, ERNA, KALATEL, VCL TP, VICON, ELMO, GE   |
| GENERAL            | Coax Protocol               | Samsung CCVC, Pelco-C  |
|                    | Coax Protocol               | Samsung CCVC, Pelco-C  |
| Electrical         | Input Voltage / Current     | 100 ~ 240V AC $\pm$ 10%, 50/60Hz, Auto ranging   |
|                    | Power Consumption           | Max. 60W (With 1x HDD)   |
| Environmental      | Operating Temperature       | +0°C ~ +40°C (+32°F ~ +104°F)  |
|                    | Operating Humidity          | 20% ~ 85% RH   |
| Mechanical         | Dimensions (WxHxD)          | 440.0 x 88.0 x 384.8mm (17.32" x 3.46" x 15.15")   |
|                    | Weight (With hard disks)    | Approx. 6.6Kg (14.61 lb)   |
|                    | Rack Mountable              | Yes  |
| Language           |                             | English, French, German, Spanish, Italian, Russian, Polish, Czech, Turkish, Netherlands, Portuguese, Swedish, Danish, Rumania, Serbia, Croatia, Hungary, Greek, Finnish, Norwegian, Korean, Japanese, Chinese (Traditional), Thai, Taiwanese (25 Language)     |

\* The latest product information / specification can be found at [www.samsungsecurity.com](http://www.samsungsecurity.com)



# BEYOND SRD-876D

8CH 1280H Real-time Coaxial DVR

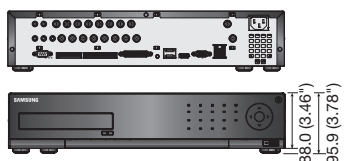
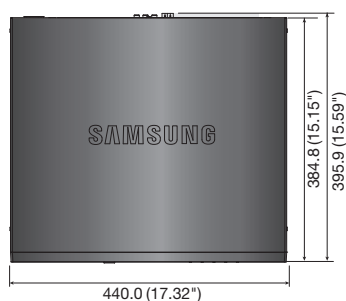


## Key Features

- 8CH 1280H real-time DVR
- Up to 240(NTSC) / 200(PAL)fps recording rate
- HDMI / VGA video output
- 8CH audio inputs / 1CH audio output
- Max. 4 internal HDDs
- PTZ control via coaxial cable (Samsung CCVC, Pelco-C)
- DVD-RW, Smart phone support (Android / iOS)
- Accurate still image (De-Interlace support each channel)
- Enhanced Network Bandwidth up to 32Mbps

## Dimensions

Unit : mm (inch)



## SRD-876D

| DISPLAY           |                             |  |
|-------------------|-----------------------------|--|
| Video             | Inputs                      | 8 Composite video 0.5-1 Vpp, 75 ohm automatic termination  |
|                   | Resolution                  | NTSC : 1280 x 480, 720 x 480 / PAL : 1280 x 576, 720 x 576   |
| Live              | Frame Rate                  | NTSC : 240fps / PAL : 200fps   |
|                   | Resolution                  | NTSC : 1280 x 480, 720 x 480 / PAL : 1280 x 576, 720 x 576   |
|                   | Multi Screen Display        | 1 / 4 / 6 / 8 / Sequence / PIP   |
| PERFORMANCE       |                             |  |
| Operating System  | Embedded                    | Linux  |
|                   | Compression                 | H.264  |
| Recording         | Record Rate                 | NTSC : Up to 240fps@1280 x 480 / PAL : Up to 200fps@1280 x 576<br>NTSC : Up to 240fps@704 x 480 / PAL : Up to 200fps@704 x 576<br>NTSC : Up to 240fps@704 x 240 / PAL : Up to 200fps@704 x 288<br>NTSC : Up to 240fps@352 x 240 / PAL : Up to 200fps@352 x 288 |
|                   | Mode                        | NTSC : Manual, Schedule (Continuous / Event), Event (Pre / Post), Time lapse (1 ~ 30 fps)<br>PAL : Manual, Schedule (Continuous / Event), Event (Pre / Post), Time lapse (1 ~ 25fps)   |
|                   | Event                       | Video loss, Motion (Level 1 ~ 10), Alarm, Tampering (Level 1 ~ 3)  |
|                   | Overwrite Modes             | Selectable (Stop / Continuous)   |
|                   | Pre-alarm                   | Up to 30sec (5, 10, 20, 30sec)   |
|                   | Post-alarm                  | Up to 6hour (5, 10, 20, 30sec, 1, 3, 5, 10, 20min, 1, 2, 3, 4, 5, 6hour)   |
|                   | Search Mode                 | Date/Time, Event, Back up, POS, Motion (*All search include preview function)  |
| Search & Playback | Playback Function           | Fast forward / backward (2x, 4x, 8x, 16x, 32x, 64x) *Backward play with i-frame only<br>Slow forward / backward (1/2x, 1/4x, 1/8x)<br>Step forward / backward *Backward play with i-frame only   |
|                   | Transmission Speed          | 4CIF / 2CIF / CIF (NTSC : 120 / 240 / 480fps, PAL : 100 / 200 / 400fps)  |
| Network (IPv4)    | Bandwidth                   | Up to 32Mbps   |
|                   | Bandwidth Control           | Selectable   |
|                   | Stream                      | H.264 (4CIF / 2CIF / CIF selectable)   |
|                   | Max. Remote Users           | Search 3 / Live unicast 10 / Live multicast 20   |
|                   | Protocol Support            | TCP/IP, DHCP, PPPoE, SMTP, NTP, HTTP, HTTPS, DDNS, RTP, RTSP, SNMP   |
| Smart Phone       | Monitoring                  | SmartViewer, Webviewer, SSM (CMS)  |
|                   | Platform                    | Android, iOS   |
|                   | Protocol Support            | RTP, RTSP, HTTP, CGI   |
| Storage           | Max. Remote Users           | Live 2, Search 1   |
|                   | Internal HDD                | Up to 4 SATA HDDs  |
|                   | External (e-SATA Interface) | 2 External SATA ports (*Expansion bay, Model : SVS-5R/5E)  |
|                   | DVD Writer (Back up)        | Yes  |
|                   | USB (Back up)               | 2 USB ports  |
| Security          | File Format (Back up)       | BU (DVR player), EXE (Include player), AVI   |
|                   | Password Protection         | 1 Admin, 10 Group, 10 User per 1 group   |
|                   | Data Authentication         | Watermark  |
| INTERFACE         |                             |  |
| Monitors          | VGA                         | 1 VGA (1280 x 720, 1280 x 1024, 1920 x 1080)   |
|                   | HDMI                        | 1 HDMI (1280 x 720, 1280 x 1024, 1920 x 1080)  |
|                   | Spot Composite              | Digital spot (2CH) *Included OSD on screen, multi mode support (1CH)   |
|                   | Loop Outputs                | 8CH  |
| Audio             | Inputs / Output             | 8CH line in (Built-in 4CH, option : audio extension cable) / 1CH line out  |
|                   | Compression                 | G.711  |
|                   | Sampling Rate               | 8KHz   |
| Alarm             | Inputs / Output             | Terminal 8 inputs (NO/NC) / Terminal 4 relay outputs (NO/NC),<br>Rating : 30V DC / 2A, 250V AC / 0.25A   |
|                   | Remote Notification         | Notification via e-mail  |
| Connections       | Ethernet                    | 1 RJ-45 10/100/1000 Base-T   |
|                   | Serial Interface            | RS-232/RS-485 (Full duplex) for PTZ, Samsung system keyboard   |
|                   | USB                         | USB 2.0, 2 ports   |
|                   | eSATA                       | 2 External SATA ports  |
|                   | Application Support         | Mouse, Remote controller   |
|                   | RS-485 Protocol             | Samsung-T/E, Pelco-D/P, Panasonic, Phillips, AD, DIAMOND, ERNA, KALATEL, VCL TP, VICON, ELMO, GE   |
| GENERAL           | Coax Protocol               | Samsung CCVC, Pelco-C  |
|                   | Electrical                  | Input Voltage / Current 100 ~ 240V AC $\pm 10\%$ , 50/60Hz, Auto ranging<br>Power Consumption Max. 60W (With 1x HDD)   |
| Environmental     | Operating Temperature       | +0°C ~ +40°C (+32°F ~ +104°F)  |
|                   | Operating Humidity          | 20% ~ 85% RH   |
| Mechanical        | Dimensions (WxHxD)          | 440.0 x 88.0 x 384.8mm (17.32" x 3.46" x 15.15")   |
|                   | Weight (With hard disks)    | Approx. 6.5Kg (14.33 lb)   |
|                   | Rack Mountable              | Yes  |
| Language          |                             | English, French, German, Spanish, Italian, Russian, Polish, Czech, Turkish, Netherlands, Portuguese, Swedish, Danish, Rumania, Serbia, Croatia, Hungary, Greek, Finnish, Norwegian, Korean, Japanese, Chinese (Traditional), Thai, Taiwanese (25 Language)     |

\* The latest product information / specification can be found at [www.samsungsecurity.com](http://www.samsungsecurity.com)

# BEYOND SRD-476D

4CH 1280H Real-time Coaxial DVR

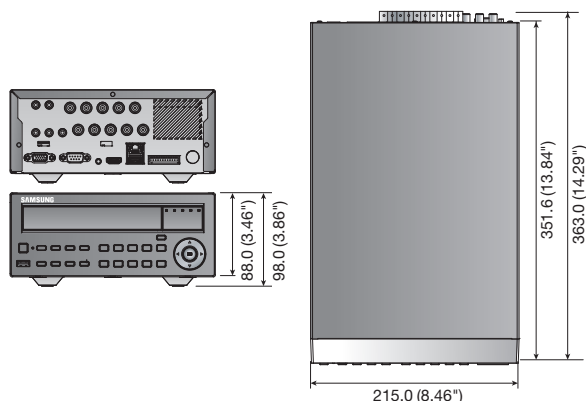


## Key Features

- 4CH 1280H real-time DVR
- Up to 120(NTSC) / 100(PAL)fps recording rate
- HDMI / VGA video output
- 4CH audio inputs / 1CH audio output
- Max. 1 internal HDD
- PTZ control via coaxial cable (Samsung CCVC, Pelco-C)
- DVD-RW, Smart phone support (Android / iOS)
- Smart searching, Tampering support

## Dimensions

Unit : mm (inch)



## SRD-476D

| DISPLAY           |                          |   |
|-------------------|--------------------------|---|
| Video             | Inputs                   | 4 Composite video 0.5-1 Vpp, 75 ohm automatic termination   |
|                   | Resolution               | NTSC : 1280 x 480, 720 x 480 / PAL : 1280 x 576, 720 x 576  |
| Live              | Frame Rate               | NTSC : 120fps / PAL : 100fps  |
|                   | Resolution               | NTSC : 1280 x 480, 720 x 480 / PAL : 1280 x 576, 720 x 576  |
|                   | Multi Screen Display     | 1 / 4 / Sequence / PIP  |
| PERFORMANCE       |                          |   |
| Operating System  | Embedded                 | Linux   |
|                   | Compression              | H.264   |
| Recording         | Record Rate              | NTSC : Up to 120fps@1280 x 480 / PAL : Up to 100fps@1280 x 576<br>*Play back 60/50fps<br>NTSC : Up to 120fps@704 x 480 / PAL : Up to 100fps@704 x 576<br>NTSC : Up to 120fps@704 x 240 / PAL : Up to 100fps@704 x 288<br>NTSC : Up to 120fps@352 x 240 / PAL : Up to 100fps@352 x 288 |
|                   | Mode                     | NTSC : Manual, Schedule (Continuous / Event), Event (Pre / Post), Time lapse (1 ~ 30fps)<br>PAL : Manual, Schedule (Continuous / Event), Event (Pre / Post), Time lapse (1 ~ 25fps)   |
|                   | Event                    | Video loss, Motion (Level 1 ~ 10), Alarm, Tampering (Level 1 ~ 3)   |
|                   | Overwrite Modes          | Selectable (Stop / Continuous)  |
|                   | Pre-alarm                | Up to 30sec (5, 10, 20, 30sec)  |
|                   | Post-alarm               | Up to 6hour (5, 10, 20, 30sec, 1, 3, 5, 10, 20min, 1, 2, 3, 4, 5, 6hour)  |
| Search & Playback | Search Mode              | Date/Time, Event, Back up, POS, Motion (*All search include preview function)   |
|                   | Playback Function        | Fast forward / backward (2x, 4x, 8x, 16x, 32x, 64x) *Backward play with i-frame only<br>Slow forward / backward (1/2x, 1/4x, 1/8x)<br>Step forward / backward *Backward play with i-frame only  |
| Network (IPv4)    | Transmission Speed       | 4CIF / 2CIF / CIF (NTSC : 120fps, PAL : 100fps)   |
|                   | Bandwidth                | Up to 16Mbps  |
|                   | Bandwidth Control        | Selectable  |
|                   | Stream                   | H.264 (4CIF / 2CIF / CIF selectable)  |
|                   | Max. Remote Users        | Search 3 / Live unicast 10 / Live multicast 20  |
|                   | Protocol Support         | TCP/IP, DHCP, PPPoE, SMTP, NTP, HTTP, HTTPS, DDNS, RTP, RTSP, SNMP  |
| Smart Phone       | Monitoring               | SmartViewer, Webviewer, SSM (CMS)   |
|                   | Platform                 | Android, iOS  |
|                   | Protocol Support         | RTP, RTSP, HTTP, CGI  |
| Storage           | Max. Remote Users        | Live 2, Search 1  |
|                   | Internal HDD             | Up to 1 SATA HDD  |
|                   | DVD Writer (Back up)     | Yes   |
|                   | USB (Back up)            | 2 USB ports   |
| Security          | File Format (Back up)    | BU (DVR player), EXE (Include player), AVI  |
|                   | Password Protection      | 1 Admin, 10 Group, 10 User per 1 group  |
|                   | Data Authentication      | Watermark   |
| INTERFACE         |                          |   |
| Monitors          | VGA                      | 1 VGA (1280 x 720, 1280 x 1024, 1920 x 1080)  |
|                   | HDMI                     | 1 HDMI (1280 x 720, 1280 x 1024, 1920 x 1080)   |
|                   | Spot Composite           | 2CH (Digital spot 1CH / Analog spot 1CH) *Included OSD on screen, Multi mode support  |
|                   | Loop Outputs             | 4CH   |
| Audio             | Inputs / Output          | 4CH line in / 1CH line out  |
|                   | Compression              | G.711   |
|                   | Sampling Rate            | 8KHz  |
| Alarm             | Inputs / Output          | Terminal 4 inputs (NO/NC) / Terminal 2 relay outputs (NO/NC),<br>Rating : 30V DC / 2A, 250V AC / 0.25A  |
|                   | Remote Notification      | Notification via e-mail   |
| Connections       | Ethernet                 | 1 RJ-45 10/100/1000 Base-T  |
|                   | Serial Interface         | RS-232/RS-485 (Half duplex) for PTZ, Samsung system keyboard  |
|                   | USB                      | USB 2.0, 2 ports (Front / Rear)   |
|                   | Application Support      | Mouse, Remote controller  |
|                   | RS-485 Protocol          | Samsung T/E, Pelco-D/P, Panasonic, Phillips, AD, DIAMOND, ERNA, KALATEL, VCL TP, VICON, ELMO, GE  |
| Coax Protocol     |                          | Samsung CCVC, Pelco-C   |
| GENERAL           |                          |   |
| Electrical        | Input Voltage / Current  | 12V DC adaptor, 4A, 100 ~ 240V AC, 50/60Hz, 48watt  |
|                   | Power Consumption        | Max. 25W (With 1x HDD)  |
| Environmental     | Operating Temperature    | +0°C ~ +40°C (+32°F ~ +104°F)   |
|                   | Operating Humidity       | 20% ~ 85% RH  |
| Mechanical        | Dimensions (WxHxD)       | 215.0 x 88.0 x 351.6mm (8.46" x 3.46" x 13.84")   |
|                   | Weight (With hard disks) | Approx. 3.3Kg (7.32 lb)   |
| Language          |                          | English, French, German, Spanish, Italian, Russian, Polish, Czech, Turkish, Netherlands, Portuguese, Swedish, Danish, Rumania, Serbia, Croatia, Hungary, Greek, Finnish, Norwegian, Korean, Japanese, Chinese (Traditional), Thai, Taiwanese (25 Language)                            |

\* The latest product information / specification can be found at [www.samsungsecurity.com](http://www.samsungsecurity.com)



---

**HEAD OFFICE**

86 Cheonggyecheon-ro Jung-gu Seoul 04541 Korea  
Tel : +82-2-729-5277, 5254 Fax : +82-2-729-5489  
[www.samsungsecurity.com](http://www.samsungsecurity.com)

---

**SAMSUNG TECHWIN EUROPE LTD.**

2nd Floor, No. 5 The Heights, Brooklands, Weybridge, Surrey,  
KT13 0NY, UK  
Tel : +44-1932-82-6700 Fax : +44-1932-82-6701  
[www.samsungsecurity.co.uk](http://www.samsungsecurity.co.uk)

---

**SAMSUNG TECHWIN AMERICA Inc.**

100 Challenger Rd, Suite 700 Ridgefield Park, NJ 07660  
Toll Free : +1-877-213-1222 Direct : +1-201-325-6920  
Fax : +1-201-373-0124  
[www.samsung-security.com](http://www.samsung-security.com)

---

**SAMSUNG TECHWIN AMERICA Inc.**

**Latin America Branch Office**

5200 Blue Lagoon Dr. Ste 210, Miami, FL, 33126  
Tel : +1-305-728-0975 Fax : +1-305-351-8900  
[www.samsung-security.com](http://www.samsung-security.com)

---

**SHANGHAI SAMSUNG TECHWIN CO., LTD.**

32F, Blk B, New Caohejing International Business Center,  
No. 391 Guiping Rd., Shanghai, China, 200233  
Tel : +86-21-5427-1155 Fax : +86-21-5423-5122  
[www.samsungsecurity.cn](http://www.samsungsecurity.cn)