



# Optimized **Banking & Financial Solutions**





# Optimized Banking Solutions

Hanwha Vision understands the unique challenges of keeping customers, staff, and property safe in the banking and financial industries. To that end, we have provided a wide range of full-featured specialty IP camera solutions in form factors that are discreet and adaptable to any environment.

## Specialty Devices and Camera Kits for Banking Environments

Hanwha Vision specialty devices include discreet camera housings and kits designed to blend seamlessly into Banking environments while capturing critical information.



### Bandit Barrier Camera Kit

This 2MP remote lens camera features a height adjustable modern design that allows it to blend seamlessly into customer counters and other high traffic areas.



### Flush Mount Door Mullion and Door Jamb Housings

Low profile remote head camera lens modules and housings are designed to be strategically placed near entrances and exits. Available in flush and surface mounted options, these modules easily integrate with the aesthetics of any given structure.



Available in white, silver or black



Available in stainless or black



### ATM Camera Kit

Hanwha Vision's ATM Camera Kit includes a universal lens mount for our covert camera series that is compatible with most popular ATM models and captures crisp images of ATM users and their surroundings regardless of environmental lighting conditions.

- ✓ 2MP 1080p resolution
- ✓ Optimized for low light environments and poor lighting conditions
- ✓ License-free intelligent video and audio analytics
- ✓ Supports up to 256GB SD card



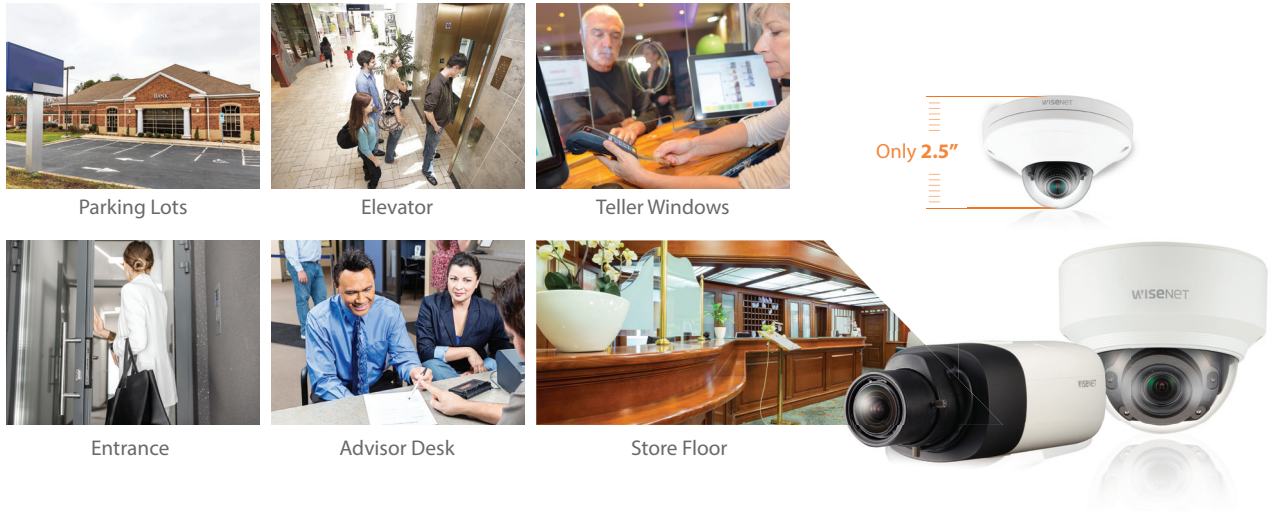


# Flexible IP Camera Solutions

Hanwha Vision IP camera solutions have evolved to meet the needs of retail environments. License-free onboard business, video, and audio analytics are included on most models in a variety of conventional and modular form factors guaranteed to suit your space.

## Discreet Form Factors

IP dome cameras in flush mountable and micro-dome form factors provide you with full area coverage without sacrificing environmental aesthetics.



# Innovative Multi-sensor/Multi-directional IP Cameras

Hanwha Vision dual-sensor multi-directional IP camera solutions include 2MP and 5MP selectable fixed lens models that eliminate the need for multi-camera installations. Each multi-sensor IP camera can be installed with a single cable and utilized with most VMS systems using just a single device recording license.



## High Resolution IP Fisheye Cameras

See an entire room with a single camera in full detail with a 360° panoramic view.



## Selectable Lenses

- ✓ Selectable lenses available in 2.4mm – 12mm focal lengths
- ✓ Easy single cable installation
- ✓ Single VMS license utilization





# Solutions Designed with Cybersecurity in Mind

As an industry leader in surveillance technologies, Hanwha Vision has taken several steps to ensure that the hardware and software products produced are equipped with protection against cybersecurity threats when deployed, both internally and externally.

## Complex Password Requirements



With the setup of every new Hanwha Vision device, a new administrative password is created. Hanwha passwords require a minimum of eight characters using up to three categories of characters and special characters. In addition, four or more consecutive or repeated characters are not permitted.

## Authentication and Encryption



Hanwha Vision cameras and devices using digest authentication will not send user credentials over the network in plain text. This measure secures login data against the possibility of network skimming and hacking attempts. When used in conjunction with SSL encryption, these devices become nearly impervious to interference from a malicious third party.

## Network Hardening Guides



Whitepapers and guides are constantly published and updated regarding new product safeguards, best practices and known vulnerabilities along with advice on mitigating cybersecurity risks. Also available is assistance from our online support portal, knowledgebase and community of industry professionals.

# Hanwha Vision IP camera features and onboard advanced video and audio analytics

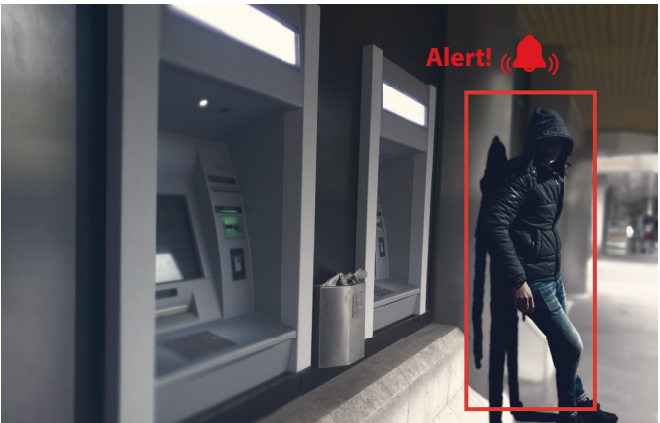
Hanwha Vision's license-free intelligent video and audio analytics technology operates on the edge, alerting operators to abnormal activities in real time. This increase in situational awareness can help to prevent or minimize damage or harm during an event by prompting a rapid and efficient response.

## Intelligent Video & Audio Analytics

### Object Detected!



**Object Appear/Disappear detection** - alert system operators to the detection of objects left behind in a scene.



**Loitering detection** - alert staff to the presence of persons remaining in unattended ATM vestibules and to the possible installation of unauthorized devices or card skimmers.



**Face detection** - Identifies key features of a human face and issues an alert when a face is present



**Virtual line crossing detection** - Objects crossing a designated virtual line can be detected



**Intrusion detection** - Triggers an event when movement is detected in a designated virtual zone



**Enter/exit detection** - Detection of objects entering or exiting a designated area



**Tamper detection** - Detects when a camera's direction is changed due to impact, sudden loss of focus, painting or blockage



**Fog detection** - Cameras can detect the presence of fog or steam and automatically improve image quality

**Audio detection** - Detects and identifies the sound of explosions, gunshot, screams, and breaking glass



Gunshot



Glass Break



Scream



Explosion

*\*Camera features and analytics vary by model*



For more information visit us at  
**HanwhaVisionAmerica.com**



**Hanwha Vision America**

500 Frank W. Burr Blvd. Suite 43 Teaneck, NJ 07666

Toll Free : +1.877.213.1222

Direct : +1.201.325.6920

Fax : +1.201.373.0124

[www.HanwhaVisionAmerica.com](http://www.HanwhaVisionAmerica.com)

© 2023 Hanwha Vision Co., Ltd. All rights reserved.

DESIGN AND SPECIFICATIONS ARE SUBJECT TO CHANGE WITHOUT NOTICE

Under no circumstances, this document shall be reproduced, distributed or changed, partially or wholly, without formal authorization of Hanwha Vision Co., Ltd.

\* Wisenet is the proprietary brand of Hanwha Vision, formerly known as Hanwha Techwin.