

## Solving Problems in the Financial Sector with Object and Attribute Detection



**Omar Valdemar**  
Business Development, Finance

213.604.2897

[o.valdemar@hanwha.com](mailto:o.valdemar@hanwha.com)

[www.hanwhasecurity.com](http://www.hanwhasecurity.com)



**David Uberig**  
Business Development, Finance

214.790.9970

[d.uberig@hanwha.com](mailto:d.uberig@hanwha.com)

[www.hanwhasecurity.com](http://www.hanwhasecurity.com)

# Agenda & Notes



- Presenter Introductions
- Introduction to Hanwha Group and Hanwha Techwin
- Next Level Cyber Security
- Advanced Analytics Powered with Object Classification and Attributes
- Analytics and AI Demonstration
- Popular Devices for Common Problems
- Questions, Q&A, and Close

1. This webinar is being recorded and will be available for replay and in pdf format. Please visit <https://www.hanwhasecurity.com/trainings/webinars/> to view past webinars & sign up for future ones.

2. All participants have been put into listen only mode.

3. We will take Q&A time permitting and if time runs out to answer all of the questions, we will reply to you individually afterwards. Please use the Chat Box.



Hanwha Techwin  
South Korea

## **Korean Heritage – Global Reach**

Hanwha Group is a proudly Korean company. We are a global conglomerate of subsidiaries and a Fortune Global 500 Entity. Founded in 1952, Hanwha Group is now a \$60B+ company with sectors including Defense Manufacturing, Aerospace, Chemicals and Green Energy Alternatives

# Manufacturing and Supply Chain

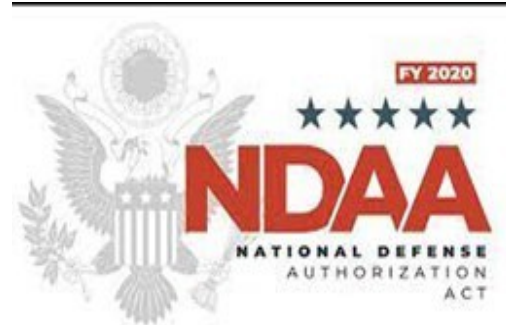
Hanwha Techwin has 30+ years of security manufacturing experience in video surveillance

Hanwha Techwin products are manufactured:

- In Hanwha Factories (Korea and Vietnam)
- With Hanwha Employees
- Using Hanwha Precision Manufacturing Equipment
- Powered by Hanwha Q-Cell Solar Power
- Featuring Hanwha designed Wisenet SoC Processors
- Sold under the Wisenet Brand



Finance





# Cyber Security

Protecting Financial Institutions from  
Reputational Risk

Enabling IT Risk Management

# Cyber Security

- Hanwha Techwin takes pride in having one of the strongest cybersecurity track records in the video surveillance industry.
- Hanwha’s cyber security related, long-term firmware support policy includes various firmware improvement activities, vulnerability countermeasures and product security quality improvement activities.
- Additionally, Hanwha operates a security vulnerability response team (S-CERT) to track and monitor unauthorized security breaches from external sources, and to prevent internal security flaws.
- NDAA Compliant (<https://www.hanwhasecurity.com/resources/national-defense-authorization-act-ndaa.html>)

## UL-CAP Certified

Underwriters Laboratories – Cybersecurity Assurance program



Cybersecurity Assurance Program

## S-CERT & External Monitoring

Security Vulnerability Response Team  
Monitoring via CVE, ICS-CERT, KISA



## Hardening

Practical setup guide, detailed guide for 4 levels of security implementation



## Disclosure

Security Vulnerability disclosure policy.  
Clear and published policy for sharing vulnerabilities



## Cyber Essentials

3<sup>rd</sup> Party accreditation  
UK Government backed accreditation scheme



## Other Certificates

TTA Public IP Camera Certificate  
KISA Intelligent CCTV Solution Certificate



# Next level cybersecurity

TPM 2.0 (FIPS 140-2 certification)



TPM is hardware that creates hard to predict 'actual random numbers' that provides enhanced security compared to software producing similar random numbers. Also, encryption keys can be saved within TPM for dual protection.

So, TPM can serve as secure storage.

**All new X-Plus and PNM cameras have applied FIPS 140-2 certified TPM.**

FIPS(The United States 'Federal Information Process Standards) is a security the standard for cryptographic modules the federal governments in the US, UK, Canada used to approve whether TPM is securely designed and implemented.

With this certified TPM, users are using cameras more securely.



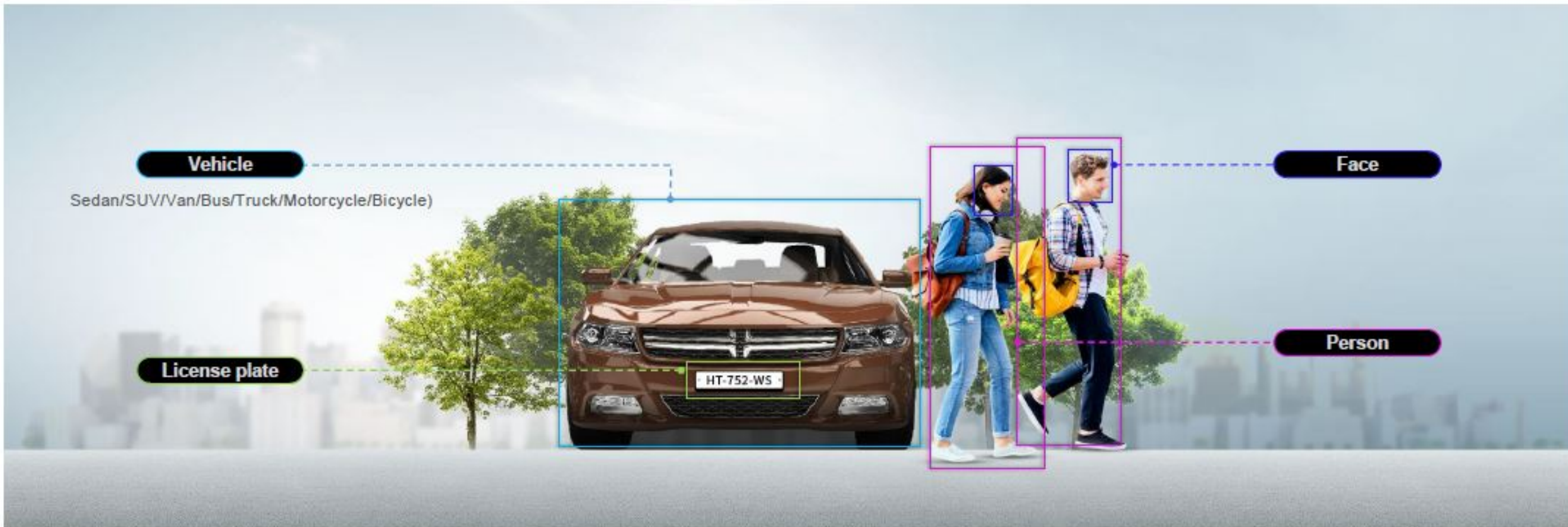
# Advanced Analytics with AI

Object Classification – Increased Reliability  
Object Attributes – Faster Searches



# Object Classification

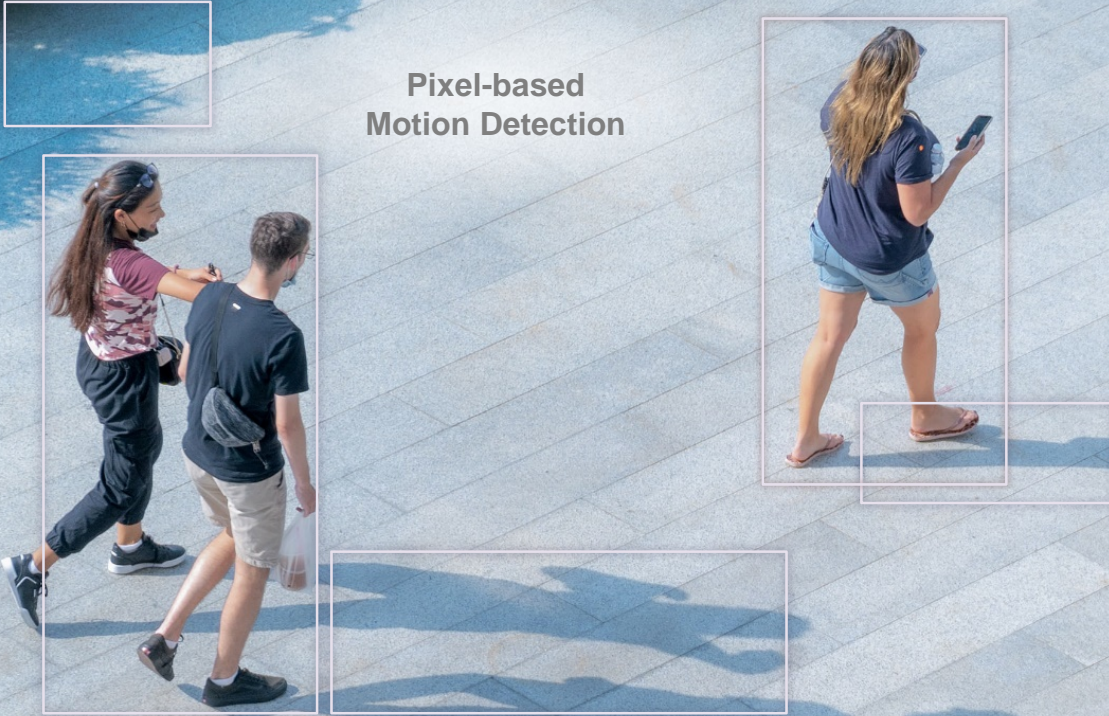
Wisenet X AI can classify People, Vehicle, Face and License plate as well as attributes extraction from the vehicle



Wisenet X AI camera generate metadata that contains the classified object, location as well as the attributes if available

X series meet AI

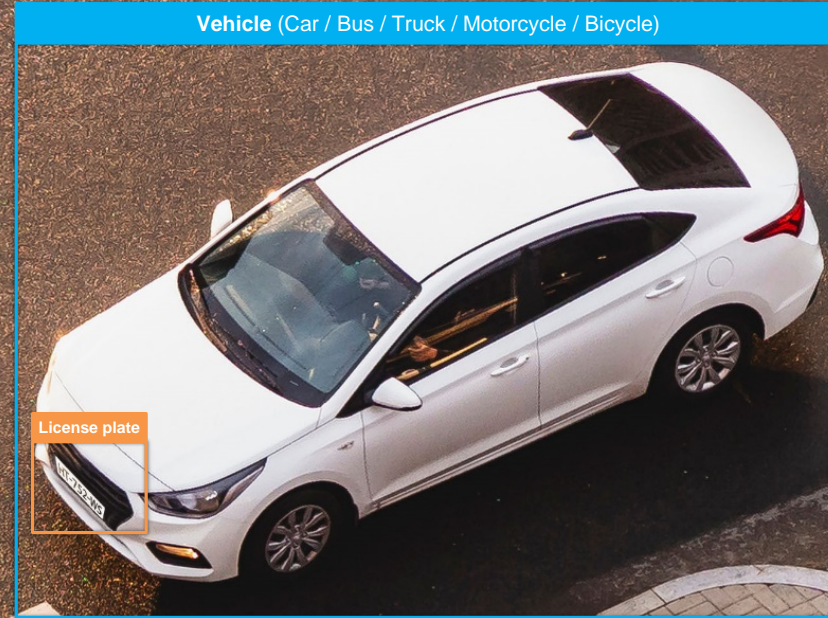
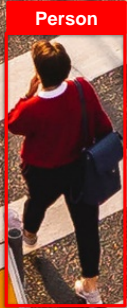
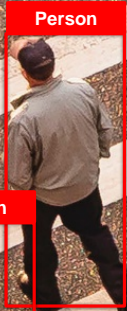
## False alarm reduction and Forensic search



### X AI Camera

The new X AI cameras detect and classify people, vehicles, faces, and license plates in real time, greatly enhancing video analytics accuracy and allowing forensic search during playback. AI algorithms can distinguish classified objects and separate them from their surroundings, such as waving trees, shadows, or animals. Thus, X AI cameras can help improve operator efficiency.

# Object classification based on AI engine



## Object classification

The camera generates metadata that includes object type (person, face, vehicle, license plate), which is sent to the VMS/NVR to be used for forensic search. Forensic search dramatically enhances the search efficiency and reduces time spent looking for events

# Intelligent Video Analytics – Enhanced by Object Classification



**Loitering**





**Virtual line**



**Enter / Exit**

# Attribute Extraction – Find Evidence Fast

Detected Objects	Attribute Category	Supported Attribute Items
 <b>Person</b>	Gender	Female, Male
	Upper garment	(Up to 2 colors simultaneously)
	Lower garment	Black, Gray, White, Red, Orange, Yellow, Green, Blue, Purple
	Bag	Carries a bag, does not carry a bag
 <b>Face</b>	Gender	Female, Male
	Age	Young/Adult/Middle/Senior
	Glasses	Wearing glasses, not wearing glasses
	Face mask	Wearing mask, not wearing mask
 <b>Vehicle</b>	Type	Car (sedan/SUV/van/etc.), bus, truck, motorcycle, bicycle
	Color	(Up to 2 colors simultaneously) Black, Gray, White, Red, Orange, Yellow, Green, Blue, Purple
 <b>License plate</b>	License plate	Presence of a license plate

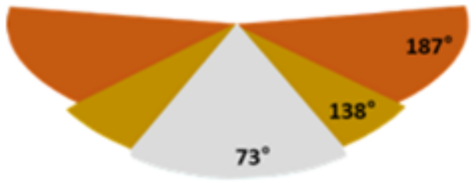
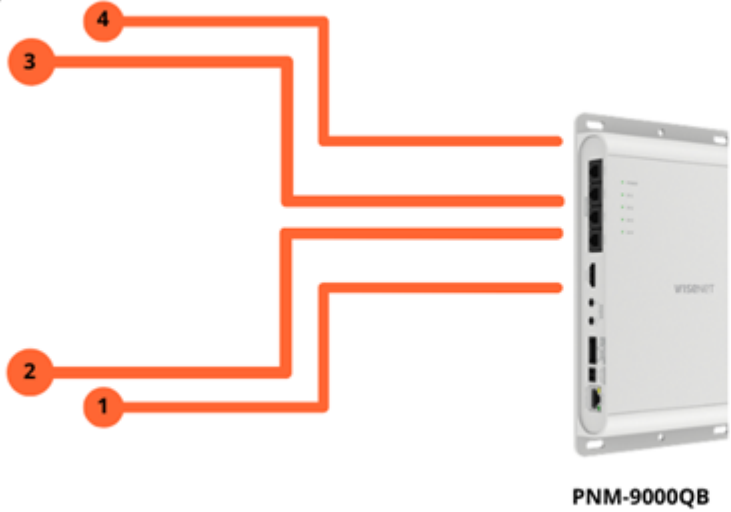
# DEMONSTRATION





# Cameras for Retail Branch Banking

Connect up to (4) cameras on a single device and a \*single VMS license



Fields of view options



Various accessories

Compatible with various lens modules



Corner mount dome



Dome bracket



# Covert Multi-Sensor

## PNM-9000QB

- 4CH multi-head camera body
- New WN7 Chipset
- 2MP IP w/ protected lens
- Many compatible accessories
- Optional 49FT cable
- Edge analytics w/ face detection
- 12VDC, POE+



# ATM

## ATM Camera Kit

- Ultra compact covert design
- Custom mounting brackets
- 2MP IP w/ analog output
- H,265 / H.264 Support
- Multiple covert lens options
- Micro SD slot 256 GB
- Coming soon, 4-sensor version!
- Bi-directional audio



XNB-6001



XNB-H6240A  Hanwha Techwin



XNB-H6280B



# Teller Counter

- Mounts to counter or glass
- 2MP IP w/ analog output
- Modular housing, flexible mounting options
- Capture suspect faces
- Micro SD slot 256 GB

# Mullion and Door Jamb Mounts

## Mullion Mount/Lens

- 2MP (1920x1080) resolution
- 4.6mm Lens, 73° horizontal FoV
- +/- 30 Degree Panning

## 2 Megapixel Door Jamb Mount/Lens

- 2MP (1920x1080) resolution
- 4.6mm Lens, 73° horizontal FoV
- +/- 30 Degree Panning



SHD-46VDB  
(Black)



SHD-46VDB  
(Silver)



Model Color Options:  
SLA-T4680D: Black  
SLA-T4680DS: Silver  
SLA-T4680DW: White

# XNB-H6461H Height Strip

## 2 Megapixel Height Strip

- 3 Lens placement options
- Curved surface w/180° HFOV camera adjustment
- Designed for easy installation
- Fits most standard door frames
- Durable aluminum construction
- Highly visible color coded height levels
- Wrap-around labels visible from side
- 12VDC and POE
- 2MP 1080P camera installed
- 4.6mm Lens, 73° horizontal FoV
- Color or B/W: 0.06Lux
- Maximum framerate 60fps
- WDR (120dB), HLC



# X-Series Plus Cameras



## X-plus AI Vandal Dome Camera

### XNV-9083R/8093R/8083R/6083R

Category	Specification
Resolution	4K / 6MP / 2MP
Lens	2.8~12mm M-VF lens (4.4~9.3mm(4K/6MP), 10.9~29mm(8093R))
Framerate	support 2MP@120fps(6083RV), 4K/6MP@30fps
Wide Dynamic Range	extremeWDR 150dB, 120dB(4K/6MP)
IR distance	wiseliR 50m / 70m (8093R)
Analytics	Improve image quality based on AI (WiseStreamIII, WiseNR II, prefer shutter control)  Object detection and classification based on AI (Person, Face, Vehicle(Car/Bus/Truck/Bike/Bicycle), License Plate)
Easy Installation	Wi-fi video by USB dongle, CVBS video output
I/O	2 Configurable Alarm I/O (support DC 12V 50ma output) 2 microSD slot(Max. 1TB(512GB x 2ea))
Power Consumption	PoE+/12V DC
Certification	IP66/IP67/IP6K9K, NEMA4X, IK10+
Security	TPM 2.0(FIPS 140-2 certified), Device certificate(Hanwha Techwin Root CA) Secure OS/boot/storage, Verify firmware forgery

# Modular Design

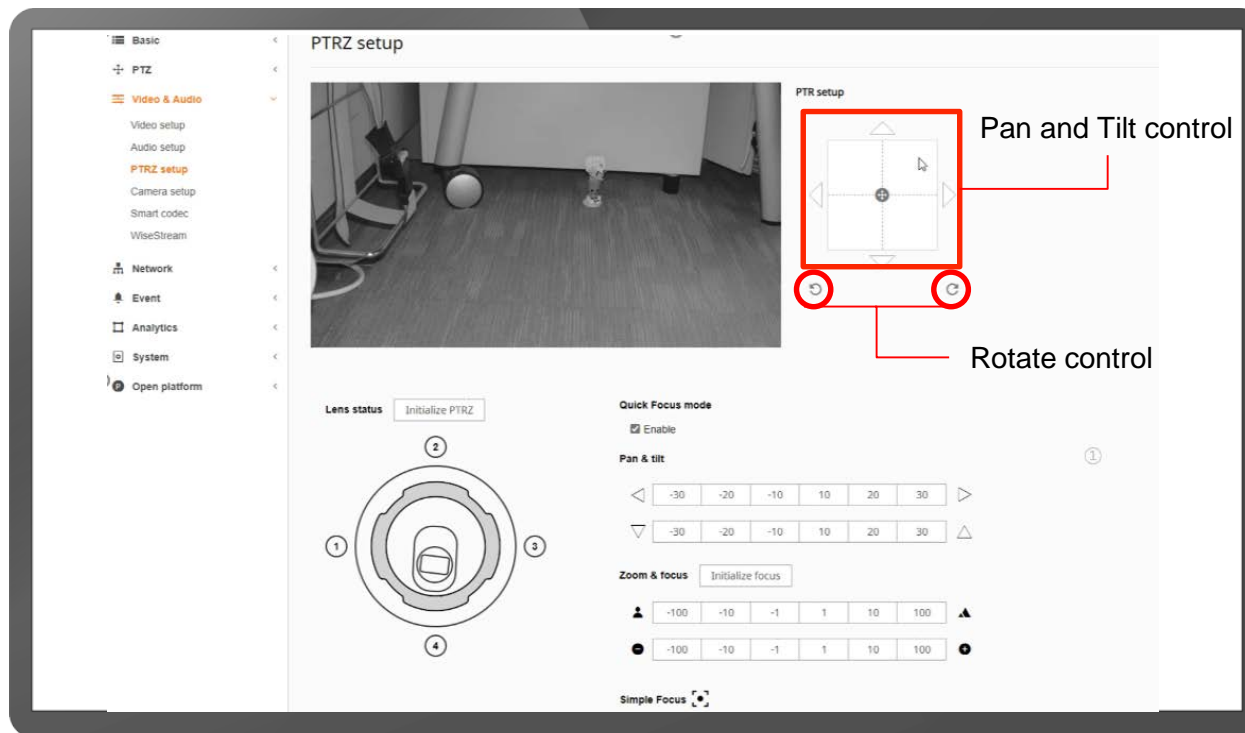
**X-PLUS  
ONLY**



**Intuitive camera installation**

## Key Feature

# Remote Camera Adjustment



Pan/Tilt/Rotate range  
0~350°/0~85°/0~340°

### Motorized PTRZ function

FoV can be remotely adjusted with motorized PTRZ reducing camera installation time. If the camera FoV needs to be changed, it can be done remotely without an expensive site visit and potential customer distraction.



# General Surveillance

## Fisheyes



XNF-9010RV/8010R&RV

Single Panorama



Double Panorama



- Compact design
- 12MP and 6MP @ 30fps
- Orig. fisheye view, single pano., double pano., quad view
- People counting & Heatmap
- Micro SD - 256 GB





NEW

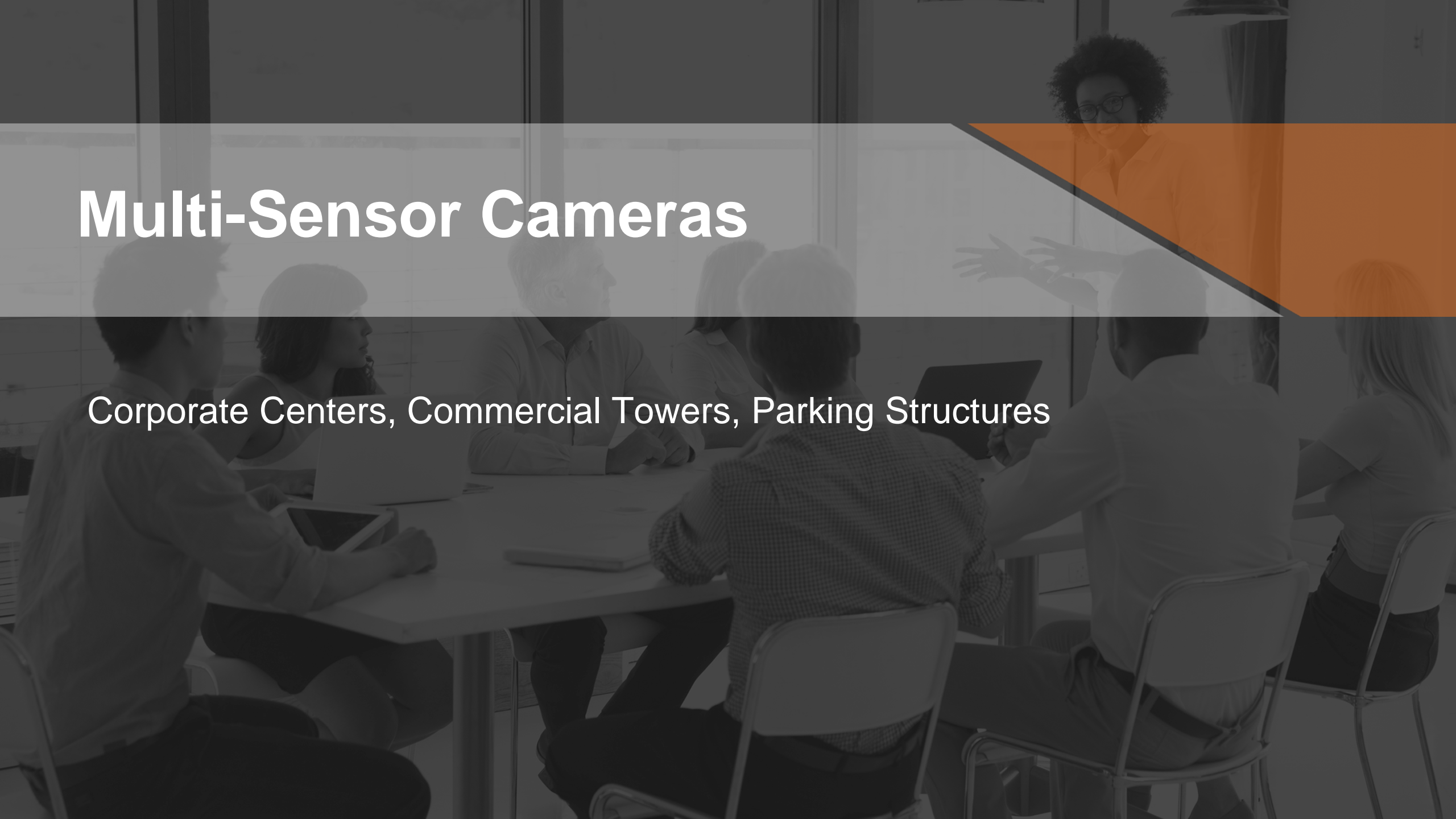
## TID-600R

### Video Intercom

- 1/2.8" 2MP sensor
- 1.6mm fixed lens : HFoV 180°, VFoV 114°
- IR viewable length 5m
- Built-in mic and speaker : 85dB speaker out at 0.5m
- Echo cancellation and noise reduction
- Touchless call, Built-in tamper switch
- SIP 2.0 support
- MicroSD 1slot, PoE/12VDC
- Max. 550mA relay out with 2A 12VDC adapter
- IP65, IK08, NEMA4X

# Multi-Sensor Cameras

Corporate Centers, Commercial Towers, Parking Structures



# Wisenet Multi-Sensor / Multi-Directional Camera Lineup

WISeNET

Pan/Tilt/Rotate and Zoom  
Multi-Imagers



PNM-9084RQZ  
PNM-9085RQZ

Panoramic  
Multi-Imager



PNM-9022V  
PNM-9031RV

Quad-Imager  
Multi-Directional



PNM-9084VQ  
PNM-9085VQ

Quad-Imager  
Multi-Directional + PTZ



PNM-9322VQP

Tri-Imager  
Multi-Directional



PNM-8082VT

Dual-Imager  
Multi-Directional



PNM-12083RVD



PNM-9002VQ

# PNM-9022V/PNM-9031RV 180° Panoramic Image

Wide Area of Coverage with a Single Camera



PNM-9022V  
7/7/2022 1:12:20 PM



Panning

# Pan/Tilt/Zoom/Rotate

- More Pixels where they are important
- Easy re-alignment
- License-Free Analytics
- Multi-sensors - save on network ports

# Dual Sensor Multi-Directional Cameras with AI

## Benefits of 2 Cameras In One:

- Use one camera to replace two cameras, monitor large spaces easily
- Compact body to look in two directions or to get a wide + narrow FoV at the same time
- Easy installation with snap in lens modules and twist-lock install plate
- Use one IP address
- Quicker installation
- Fewer network drops, ports on switch, devices to maintain
- Dual SD card slots – one for each lens
- Individual dome bubble allows for full flexibility for viewing direction



# Top VMS Integration Partners for Finance

**Genetec**<sup>™</sup>

**VERINT**

exacq**VISION**<sup>®</sup>

 **milestone**

**SOLINK**

 **MARCH**<sup>®</sup>  
networks

 **SALIENT**

# Questions & Answers



# Thank You!



**David Uberig**  
Business Development, Finance

214.790.9970

[d.uberig@hanwha.com](mailto:d.uberig@hanwha.com)

[www.hanwhasecurity.com](http://www.hanwhasecurity.com)



**Omar Valdemar**  
Business Development, Finance

213.604.2897

[o.valdemar@hanwha.com](mailto:o.valdemar@hanwha.com)

[www.hanwhasecurity.com](http://www.hanwhasecurity.com)